

CyberLink

PowerCinema 5

User Guide

CyberLink

Copyright and Disclaimer

All rights reserved. No part of this publication may be reproduced, stored in a retrieval system, or transmitted in any form or by any means electronic, mechanical, photocopying, recording, or otherwise without the prior written permission of CyberLink Corporation.

To the extent allowed by law, CyberLink PowerCinema IS PROVIDED "AS IS", WITHOUT WARRANTY OF ANY KIND, EITHER EXPRESS OR IMPLIED, INCLUDING WITHOUT LIMITATION ANY WARRANTY FOR INFORMATION, SERVICES, OR PRODUCTS PROVIDED THROUGH OR IN CONNECTION WITH CyberLink PowerCinema AND ANY IMPLIED WARRANTIES OF MERCHANTABILITY, FITNESS FOR A PARTICULAR PURPOSE, EXPECTATION OF PRIVACY, OR NON-INFRINGEMENT.

BY USING THIS SOFTWARE, YOU AGREE THAT CYBERLINK WILL NOT BE LIABLE FOR ANY DIRECT, INDIRECT, OR CONSEQUENTIAL LOSS ARISING FROM THE USE OF THIS SOFTWARE OR MATERIALS CONTAINED EITHER IN THIS PACKAGE.

The terms and conditions here under shall be governed and construed in accordance with the laws of Taiwan.

CyberLink PowerCinema is a registered trademark along with other company and product names mentioned in this publication, used for identification purposes and remain the exclusive property of their respective owners.

International Headquarters

| | |
|------------------------|---|
| Mailing Address | CyberLink Corporation 15F, #100, Minchiuan Road, Shindian City Taipei 231, Taiwan |
| Web Site | www.cyberlink.com |
| Telephone | 886-2-8667-1298 |
| Fax | 886-2-8667-1300 |

Copyright © 2006 CyberLink Corporation. All rights reserved.

Contents

Overview 1

| | |
|-------------------------------------|----|
| Setup Wizard | 2 |
| Home Page | 12 |
| Navigation Controls | 13 |
| Browsing for Media Content | 13 |
| Remote Control | 14 |
| Player Controls for Mouse Use | 14 |
| Settings | 15 |
| General Settings | 15 |
| Display Settings | 16 |
| Audio Settings | 18 |

TV 21

| | |
|----------------------------------|----|
| Watching TV | 22 |
| Quick Menu | 22 |
| TV Menu Options | 24 |
| Recorded TV | 24 |
| TV Recording Schedules | 25 |
| Program Guide | 26 |
| Searching for a TV Program | 26 |
| Extra TV Features | 27 |
| Instant Replay | 27 |
| Twin TV (Optional) | 27 |
| Triple TV (Optional) | 28 |
| TeleText | 29 |
| Commercial Cut (Optional) | 29 |

TV Settings31
 Signal Settings31
 Manage Channels32
 Recording Settings33
 Guide Settings34

Movies 35

Watching Movies36
Movie Settings38

Videos 39

Watching Videos40
 Browsing for Videos40
 Capturing Videos41
Video Settings42

Music 43

Listening to Music44
 Browsing for Music44
 Watching Visualizations45
 Using Playlists45
 Ripping Audio CDs47
Sync & Go48
Music Settings50

Pictures..... 53

Viewing Pictures54
 Browsing for Pictures55
Editing Pictures56
Picture Settings57

Radio 59

Listening to the Radio60
 Radio Time-Shifting60
Managing Radio Stations61
 Add a New Station61
Radio Recording Schedules62
Radio Settings63

News..... 65

Viewing the News66
News Settings67
 Import News Feeds67
 Export News Feeds68

Weather..... 69

Viewing the Weather70
 Adding a new city to the City List70
Weather Settings71

Extras..... 73

Extras Content74

Technical Support..... 75

Before Contacting Technical Support76
Web Support77
Telephone Support78

Index 79

Chapter 1:

Overview

Welcome to CyberLink PowerCinema and the world of digital home entertainment! CyberLink PowerCinema is an integrated multimedia player that brings you the enjoyment of live TV, movies, music, up-to-date news information and much, much more.

Before using CyberLink PowerCinema we recommend that you optimize your computer for multimedia using the Setup Wizard.

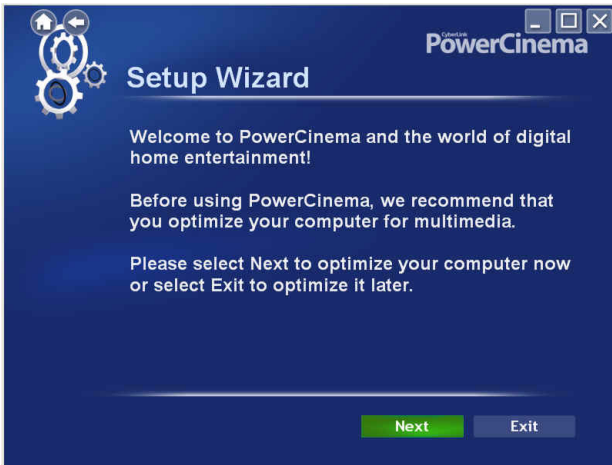
Note:

- Ensure all the required hardware (i.e. tv tuner card and radio card) has been installed before launching CyberLink PowerCinema. For a hardware compatibility list or tutorial for setting up a tv tuner card, refer to the support section of our web site. <http://www.cyberlink.com>
- If you encounter any problems while setting up the hardware, please contact the hardware vendor for assistance.

When you first launch CyberLink PowerCinema, you will be prompted to run the setup wizard.

Setup Wizard

1. The Setup Wizard begins by displaying a welcome message. Select the **Next** button to begin optimizing your computer for use with CyberLink PowerCinema.



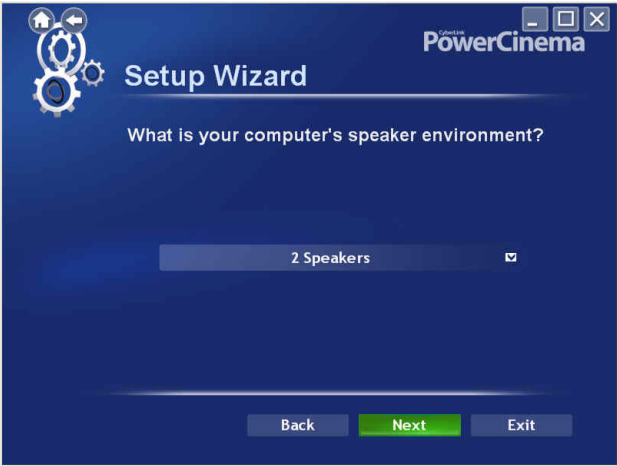
Note:

- You may exit the Setup Wizard at any time by selecting Exit. You will be asked if you want to run the Setup Wizard the next time CyberLink PowerCinema is launched. You may also run the Setup Wizard at any time by accessing it on the Settings page.
- It is strongly recommended that you complete the Setup Wizard the first time CyberLink PowerCinema is launched or when new hardware is installed to ensure that all the hardware was installed correctly.

- 2. Select the screen ratio of your display device (either **4:3** or **16:9**) and then select **Next**.



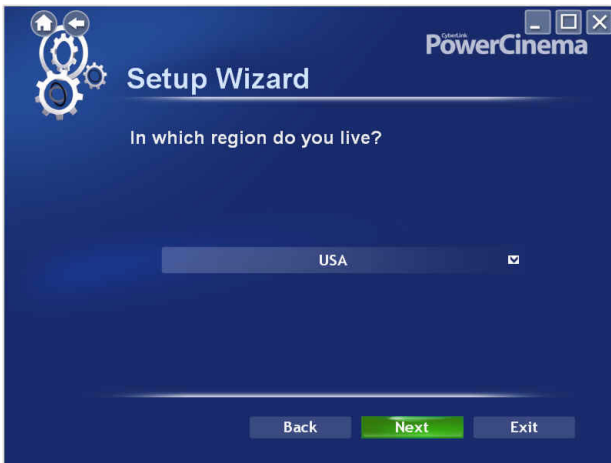
- 3. The Setup Wizard will then ask you what the speaker environment of your computer is. Select the option from the drop-down menu that best describes your environment and then select **Next**.



4. CyberLink PowerCinema will now help you configure your TV tuner card, including scanning for available channels. Select **Next** to begin configuring your TV tuner card.



5. To assist CyberLink PowerCinema to find all the available channels in your area, select the region you live in from the drop-down menu and then select **Next**.



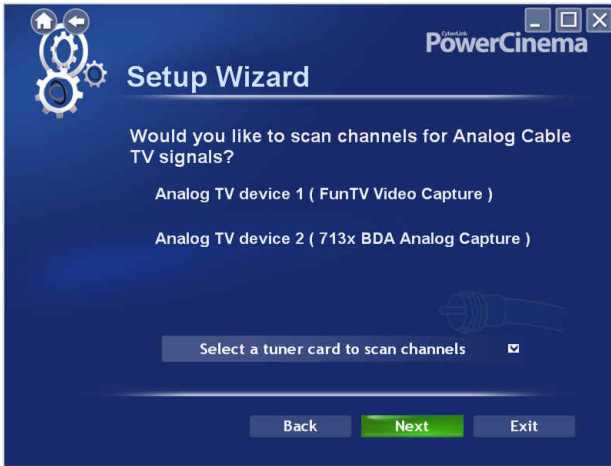
6. Select the type of TV tuner card that you have install in your computer and then select **Next** to continue.



7. Choose where you would like to save your recorded TV files on your computer. You may change this location later on the **TV Settings** page.



- To scan for available channels, select your tuner card from the drop-down menu and then select **Next**.



- Once CyberLink PowerCinema has completed scanning for available channels, select **Next** to display the scanning results.



You may select **View channel list** to view a list of the found channels.

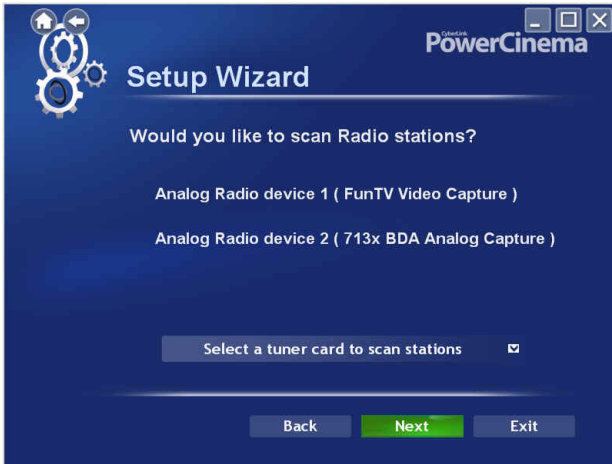
10. CyberLink PowerCinema will now help you configure your radio tuner card, including scanning for available stations. Select **Next** to begin configuring your radio tuner card.



11. Choose where you would like to save your recorded radio files on your computer. You may change this location later on the **Radio Settings** page.



12. To scan for available stations, select your tuner card from the drop-down menu and then select **Next**.

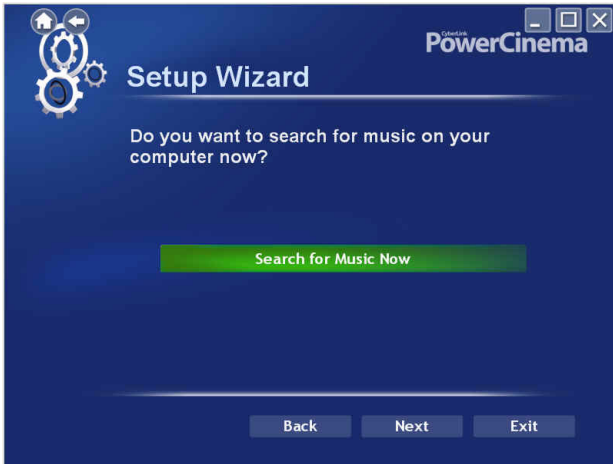


13. Once CyberLink PowerCinema has completed scanning for available stations, select **Next** to display the scanning results.

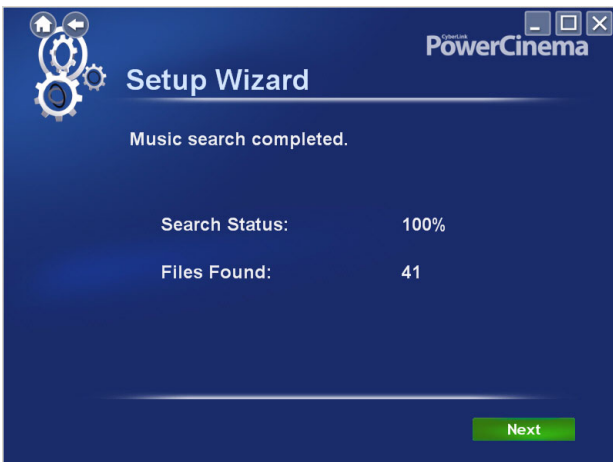


You may select **View station list** to view a list of the found stations.

14. CyberLink PowerCinema will now search for music files on your computer. Select **Search for Music Now** to begin searching.



15. Once CyberLink PowerCinema has completed searching for music, the search results will be displayed.



16. Select **Next** to display the Product Registration Page and enter in your name and email address to register your copy of CyberLink PowerCinema, so you can receive technical support.



The screenshot shows a window titled "Setup Wizard" for CyberLink PowerCinema. The window has a dark blue background and a logo of three interlocking gears in the top left corner. The text inside the window reads: "Thank you for using PowerCinema. Please complete the product registration so we can offer you technical support when you need it." Below this text are three input fields labeled "First Name:", "Last Name:", and "E-Mail:". At the bottom left, there is a checked checkbox with the text "I want to receive CyberLink Newsletter". At the bottom right, there are three buttons: "Back" (highlighted in green), "Next", and "Exit".

Also choose whether you want to receive the CyberLink Newsletter and then select **Next**.

17. Congratulations! Your computer has now been optimized for multimedia. Select **Finish** to begin using CyberLink PowerCinema.



Home Page

The Home page displays the available media types, which you can browse through using a mouse's scroll wheel or the **Left/Right** arrows on the keyboard. Select from one of the available features in CyberLink PowerCinema to begin enjoying live TV, movies, music, up-to-date news information and much, much more!





Note: Cyberlink PowerCinema's features and its user interface depends on its version and add-on packs that are installed.

If your computer is connected to the Internet, CyberLink PowerCinema will display the current weather conditions of your favorite city in the top right corner. CyberLink PowerCinema will also periodically display product news and information in the lower right corner. Selecting a product icon opens a web page with more details and ordering information.

Navigation Controls

The navigation bar across the top of the window contains a number of buttons for navigating around CyberLink PowerCinema. Select the

Home icon  to return to the Home page. Select the **Back** icon  to return to a previous page. The **Minimize**, **Full Screen/Window**, and **Close** buttons have standard Windows behavior.




The Movies, Videos, Music, and TV functions continue to play as you navigate around CyberLink PowerCinema, allowing you to enjoy your media while performing other tasks. To return to the media that is playing, select the Now Playing pane in the bottom left corner.



Browsing for Media Content

Media pages have functions on the left and a content browsing area on the right. Files are displayed as thumbnails (or icons) and organized in folders. Select a folder to display its contents.

If the number of files and folders displayed exceeds one page in the content browsing area, use the up/down buttons  in the lower right corner to scroll through the pages. You can also use the up/down arrows on the keyboard to scroll up or down one row, or the **Page Up/** **Page Down** keys to scroll up or down an entire page.

To go up one folder level, select the **Up One Level** icon



Remote Control

You can use the remote control with CyberLink PowerCinema for convenient media enjoyment from across the room. To control media playback using the remote control, use the dedicated playback control buttons. Most of the buttons behave like those on a consumer DVD or CD player.

Player Controls for Mouse Use

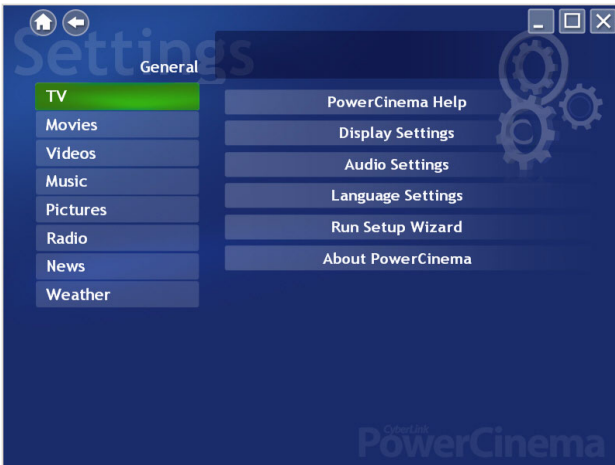
To play a media file, select its thumbnail (or icon) in the content browsing area. The player control panel appears whenever you move the mouse, then automatically disappears several seconds after the mouse stops moving.



Standard playback buttons include **Stop**, **Play/Pause**, **Previous**, **Rewind**, **Fast Forward**, and **Next**. Volume controls include **Volume Down**, **Mute/Speaker On**, and **Volume Up**. Other control buttons vary depending on the type of media being played.

Settings

Selecting **Settings** on the Home page opens a page of options for configuring CyberLink PowerCinema.



General Settings

PowerCinema Help opens this help system.

Display Settings opens a page with options for configuring your display device. (See "Display Settings" on page 16.)

Audio Settings opens a page with options for configuring your computer's audio. (See "Audio Settings" on page 18.)

Language Settings allows you to change the display language of CyberLink PowerCinema. The language display will change dynamically, without you having to restart the program.

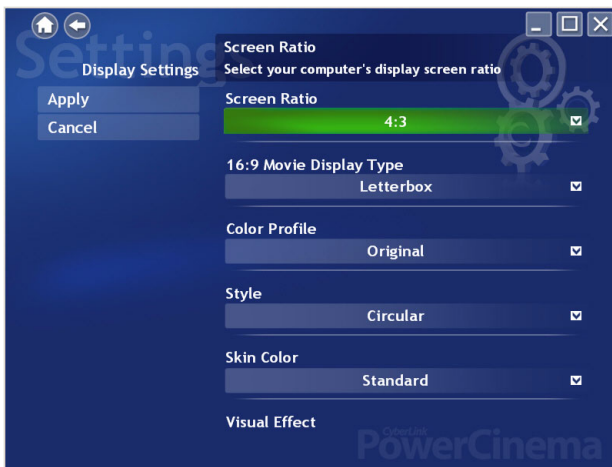
Run Setup Wizard opens the wizard that appears the first time you run CyberLink PowerCinema, allowing you to optimize your computer if you did not do so after installation, or if you upgrade your computer.

You can also register your copy of CyberLink PowerCinema at the end of the Run Setup Wizard..

About CyberLink PowerCinema opens a page with version and copyright information, as well as your personal registration information.

Note: Other settings can be found in the function-specific help sections.

Display Settings



Use the **Screen Ratio** to indicate if you have a standard (4:3) or widescreen (16:9) display.

16:9 (or 4:3) Movie Display Type determines how movies and videos are converted to fit the screen when they do not match the screen ratio. **Letterbox** keeps the video display undistorted and fills the extra space with black bars. **CLPV** is a video stretching technology from CyberLink that produces minimal distortion in the center of the picture. **Pan & Scan** displays the central portion of DVD titles in widescreen ratio, and allows you to drag the display area to view different portions of the video.

Color Profile allows you to change the overall color scheme of video content during playback. **Original** uses the color scheme of the disc you are watching. **Vivid**, **Bright**, and **Theater** add enhanced color to the video display. **CLEV-2** is a video enhancement technology from CyberLink that dynamically adjusts the brightness, contrast, and saturation if the movie you are watching contains scenes that are overly dark or bright. Options other than **Original** require more system resources to run.

Style allows you to select the menu style on the home page. Choose between the standard menu and the circular menu. The **Skin Color** option allows you to change the skin color of CyberLink PowerCinema. The **Visual Effect** option lets you choose between 2D and 3D effects in CyberLink PowerCinema. Select **Good** or **Best** for 3D effects, or **Off** for 2D effects.

Note: If your display card does not support 3D graphics, this option will not be available. CyberLink PowerCinema automatically detects your display card capability.

Load Default Settings returns the settings on this page to their original values. If you modify any settings on this page, you must select **Apply** for these changes to take effect.

Audio Settings



Set **Speaker Environment** to match the number of speakers you have. Select **SPDIF** for digital audio output.

Output Mode determines the special processing used on the audio signal. Experiment with the available settings to decide which you prefer.

Audio Channel Expander expands the range of sound of 4 or 6 speaker output. **CLMEI 2** is an audio channel expansion technology from CyberLink that converts stereo audio sound and outputs it to multiple channels. There are three variations: **CLMEI 2 - Movie** for watching movies, **CLMEI 2 - Music** for regular music output, and **CLMEI 2 - Onstage** for a more live sound.

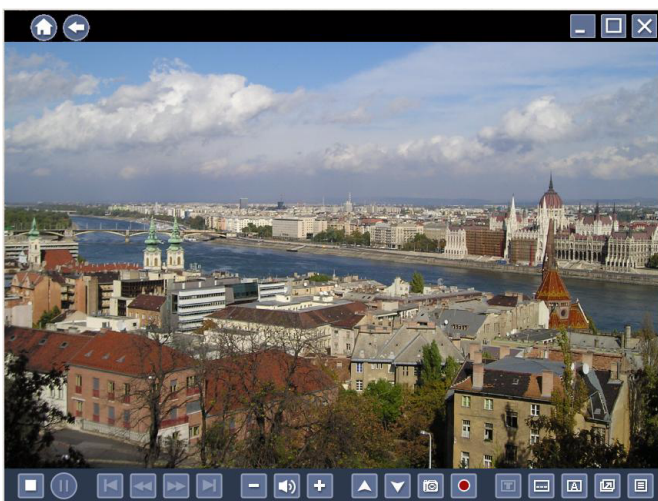
Dynamic Range Compression offers options for different listening environments. **Normal Environment** creates a standard virtual listening environment. **Quiet Environment** emphasizes even the slightest sound effect in a movie. **Noisy Environment** amplifies low range audio signals, which is especially suitable for notebook computers.

Load Default Settings returns the settings on this page to their original values. If you modify any settings on this page, you must select **Apply** for these changes to take effect.










Chapter 2:

TV

CyberLink PowerCinema allows you to watch TV on your computer. You can watch TV programs, schedule recordings and watch recorded TV shows. Select TV on the Home page to open the main TV page.



Watching TV

When you watch TV, the following additional buttons appear on the playback controls for use with a mouse:  **Channel up** (switches up one channel), **Channel down**  (switches down one channel),  **Snapshot** (takes a snapshot of the current frame of video),  **Record** (records TV content as a video file),  **TeleText** (displays TeleText information),  **Subtitle** (displays broadcast subtitles when available),  **Audio** (switch between audio modes when available),  **Always on Top** (TV window is always on top of other programs on your computer) and  **Quick Menu** (provides quick access to the TV Menu and other settings).

Quick Menu

The TV window automatically displays the current channel in full screen mode. To display the TV menu options page, select the Quick Menu icon on the Playback Controls panel and then select **Menu**.



Select **TV/AV Source** on the Quick Menu to change the source of your TV broadcast.

Note: CyberLink PowerCinema supports multiple tuners, including Analog (Composite, S-Video), DVB-S, DVB-T, ATSC.

Select **Channel List** to view the list of available channels you can choose to watch. Select **Subtitle** to display broadcast subtitles. Select **Audio** to change the TV audio mode.

Note:

- The Subtitle and Audio features are only available through some available digital TV programs.
- When available, Twin TV will also be available in the Quick Menu.
- When a DVB signal is detected, a Radio option will be available in the Quick Menu listing any channels that consist of an audio signal only.

TV Menu Options

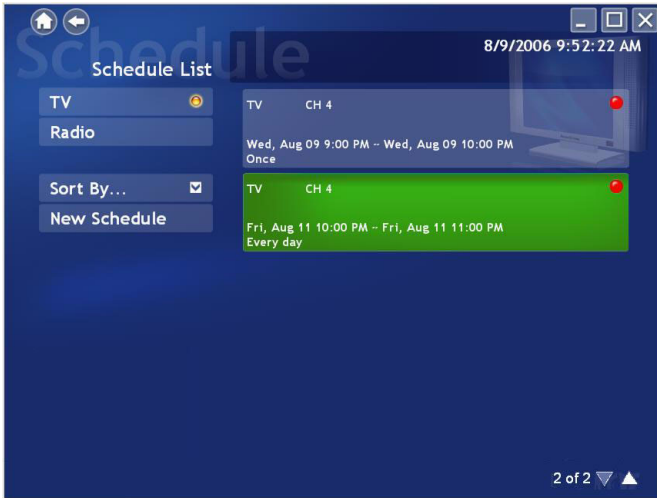


Recorded TV

Select **Recorded TV** on the TV Menu page to display the Recorded TV page, which contains files recorded from a TV. Select what recorded TV files are displayed using the **View By...** option. You can view files by file, channel or category for files that were recorded with EPG data. CyberLink PowerCinema automatically saves EPG program information when TV programs are recorded, allowing you to view this information in the Recorded TV folder.

To change the order in which the files are displayed, use the **Sort By...** option to arrange by recorded date or program name. A thumbnail image shows the first frame of the file. Select a recorded TV file to play it at full screen.

TV Recording Schedules



Schedule displays all current recording schedules. To set a recording schedule, select **Schedule, New Schedule**. (Make sure that TV is selected.) In the page that opens, select the Channel you want to record, the Scheduling Interval, and the recording date and times.

Select **Apply** to activate the recording schedule, or **Cancel** to quit without accepting the schedule. Select an existing recording schedule to open it for modification. Select **Delete** to remove a recording schedule you have previously created.

Program Guide

CyberLink PowerCinema allows you to use **Electronic Program Guides (EPG)** to list available programs by channel and time and view detailed program information.

Note:

- The Program Guide feature is only available in certain regions.
- You must first activate your EPG on the Guide Settings page.

Searching for a TV Program

You may search for a specific program using the **Find Program** option.

To search for a program:

1. Select **Find Program**, then **Input a key word**.
2. Type in a keyword and then select **Enter**. A list of programs containing that keyword will be displayed.

Note: Use **Recent key words** to re-search for previously entered key words.

Extra TV Features

CyberLink PowerCinema includes a number of extra features that can enrich your TV viewing experience.

Instant Replay

The CyberLink PowerCinema TV feature supports instant replay so you won't miss any moments of your favorite TV programs. By default, the instant replay function is disabled in CyberLink PowerCinema (See **Enable Time-Shifting** in the **Signal Settings** page to enable it). To create an instant replay, CyberLink PowerCinema records the TV broadcast as a file, creating a slight lag between the broadcast and the TV content that you watch. Using the TV control buttons you can pause live TV, or navigate forward and backward to create an instant replay or to skip over commercials.

Twin TV (Optional)

Twin TV displays two TV channels on your TV, allowing you to watch two TV programs at the same time.

Note: You must have a TV tuner card that supports multiple video inputs, two TV tuner cards or a digital signal that supports Bouquet to use the Twin TV feature.

Twin TV supports both analog and digital available video input. Users may also use the same DTV source for Twin TV by using Bouquet.

Enabling Twin TV

To enable Twin TV mode:

1. Select **Twin TV**.

2. Select the Video Input source (or **Bouquet** if available) for the secondary channel. The channel list will be displayed.
3. Select a TV channel from the list.

The second TV channel will be displayed in a smaller display window on the bottom left of your screen. If you change to full screen mode, the second TV channel will be displayed in PiP mode on your screen.

If you are using a remote control, you may also change the position of your PiP frame in full screen with the remote control.

Triple TV (Optional)

Triple TV displays three TV channels on your TV, allowing you to watch three TV programs at the same time.

Note: You must have a TV tuner card that supports multiple video inputs, three TV tuner cards or a digital signal that supports Bouquet to use the Triple TV feature.

Triple TV supports both analog and digital available video input. Users may also use the same DTV source for Triple TV by using Bouquet.

Enabling Triple TV

To enable Triple TV mode:

1. Select **Triple TV**.
2. Select the Video Input source (or **Bouquet** if available) for the third channel. The channel list will be displayed.
3. Select a TV channel from the list.

The second and third TV channels will be displayed in smaller display windows on the bottom left of your screen. If you change to full screen mode, the second and third TV channels will be displayed in PiP mode on your screen.

If you are using a remote control, you may also change the position of your PiP frames in full screen with the remote control.

Note: You must first enable Twin TV before you can display the third Triple TV window.

TeleText

When you select the **TeleText** button, the TeleText page opens, displaying listings with different kinds of information. To navigate within the TeleText function, use the remote control buttons or the playback control buttons.

Select the **TeleText** button to scroll through the TeleText, transparent (TeleText+TV), and Live TV pages. Press the **Backspace** button on the keyboard or the **BACK** button on the remote to return to the main TV page.

When you use the TeleText function, the following special controls are added to the pop-up control panel: **Red** (opens TeleText pages marked in red), **Green** (opens TeleText pages marked in green), **Blue** (opens TeleText pages marked in blue), **Yellow** (opens TeleText pages marked in yellow). You can also use the corresponding buttons on the remote to perform the same functions.

Previous Page (jumps back one page), **Next Page** (jumps forward one page), **Previous SubPage** (jumps back one subpage), **Next SubPage** (jumps forward one subpage), and **Snapshot** (captures the TeleText screen in the format selected in TV settings).

Commercial Cut (Optional)

You can edit out the commercials in your TV recordings. To do this, select the video you want to edit and select **Commercial Cut**. Select **Auto Detection** to let CyberLink PowerCinema automatically detect the commercial scenes in the video and determine how to edit the video. After auto detection is finished, select **Preview** to preview the edited video. Select **Output to new file** to save the edited video.

If you wish to manually edit your TV recordings, select **Manual Edit** to edit your TV recordings yourself.

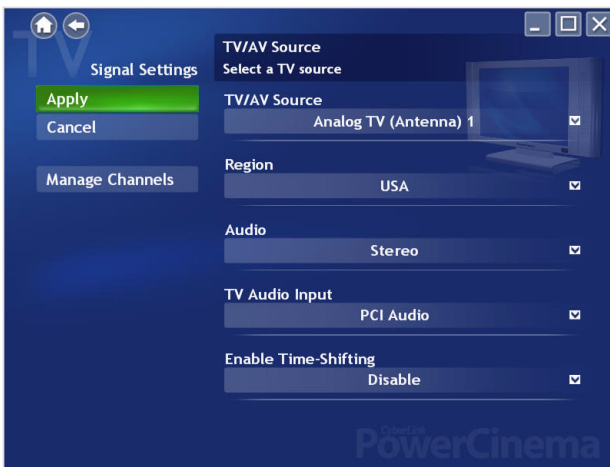
Note: Availability of this feature is dependant on the version and add-on packs installed. Consult the ReadMe file to determine the version or add-on pack required for this feature to be available.

TV Settings

TV settings are organized into the following topics: Signal Settings, Manage Channels, Recording Settings and Guide Settings.

Restore Default Settings returns all of the settings in CyberLink PowerCinema to their original values.

Signal Settings



In the **TV/AV Source** option, select if your TV receives signals from an analog, digital or composite source.

The **Region** option allows you to select the country or region where your cable provider is located.

Audio allows you to set your audio output. Options depend on your TV's signal type, but may include **Mono**, **Stereo**, or **SAP**.

In the **TV Audio Input** option, select the source of your audio input.

Set the **Enable Time-Shifting** option to **Enable** to watch instant replays. Set the **Auto Hide Twin TV In Full Screen** option to **Enable** for the PiP window to automatically hide when viewing a channel in full screen mode.

Manage Channels

To manage your TV channels, select **Manage Channels**. If no channel list exists, select **Scan Channels**. Your computer will scan and list the available TV channels. To disable a channel in the list, select it, then choose **Deselect**. Disabled channels are not available for watching when you return to the TV page.

To rename a channel in the list, select it, choose **Rename**, then enter the new name. If you modify any settings on this page, you must select **Apply** for these changes to take effect.

Recording Settings



The **Recording Quality** option allows you to set the quality of video recorded from TV. Selecting a higher quality results in a larger recorded file.

Recording Destination allows you to set the destination where files recorded from TV are saved. To search for recorded files that contain EPG data in the Recording Destination folder, select the **Scan Folder** button.

Note: It is recommended that you perform a folder scan if you changed the Recording Destination folder to ensure the best results when viewing recorded files by category.

Burn to Disc Directly allows you to burn your TV recordings directly to a DVD/VCD disc.

Select Captured Teletext Format (Optional) allows you to select your preferred format for Texttext captured using the **Snapshot** function. Available formats include .bmp, .txt, .rtf and .html.

Guide Settings

Select **EPG Source** to indicate if you want to use **NexTVView** or the **Internet** as your source of EPG (electronic program guide) information.

Note:

- The Program Guide feature is only available in certain regions.
- CyberLink PowerCinema supports multiple EPG preview with different TV types.

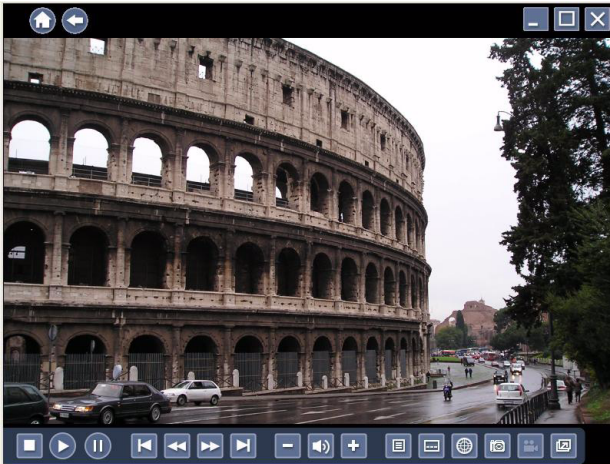
CyberLink PowerCinema will guide you through the activation of your EPG. Enter in your region specific information and then select your EPG provider from the **EPG Provider** list.

Once you are finished, it may take time for your TV program data to be downloaded. (Download time depends on the size of the data and the bandwidth of your Internet connection).

Chapter 3:

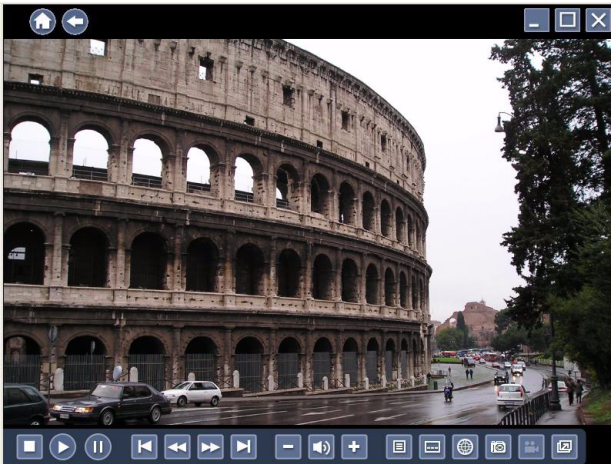
Movies







CyberLink PowerCinema allows you to play and watch movies (in DVD, VCD or SVCD formats) on your computer. This function has the features and controls of a normal living room DVD player. Select **Movies** on the Home page to open the Movies feature.



Watching Movies

When you insert a disc into your computer's disc drive, the movie begins to play automatically. If more than one disc drive with content is available, select the disc you want to watch in the content selection area.



When you watch a movie, the following special controls are added to the pop-up control panel:  **Disc Menu** (displays the disc's menu page),  **Subtitles** (switches among available subtitle languages),  **Language** (switches among available overdub languages),  **Snapshot** (takes a snapshot of the current frame of video; this function requires a mouse to use),  **Angle** (switches among available camera angles) and  **Always on Top** (the movie window is always on top of other programs on your computer).

When you press **Stop** during a movie (or access the Movies function without inserting a disc in your drive), the main Movies page appears.



Functions on the left that are used to control playback include **Resume** (starts the movie from the point it was stopped), **Restart** (starts the movie from the beginning), **Disc Menu** (displays the disc's menu page) and **Eject** (opens the disc drive door).

Movie Settings



Closed Captions determines the location of the closed captioning function. When this option is set to **Normal**, closed captions appear across the bottom of the screen. When set to **Elevated**, closed captions appear across the top of the screen.

Display Upon Mute determines the optional display when the volume is muted. If you enable this option, you can choose to display subtitles or closed captions.

Load Default Settings returns the settings on this page to their original values. If you modify any settings on this page, you must select **Apply** for these changes to take effect.

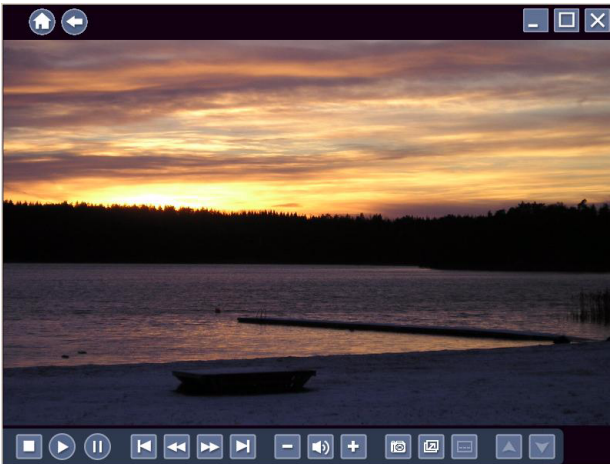
For information on Display settings, see "Display Settings" on page 16.

For information on Audio settings, see "Audio Settings" on page 18.

Chapter 4:

Videos


CyberLink PowerCinema allows you to watch video files (in .dat, .mpg, .avi, .asf, .mpeg, .div, .divx, .wm, .wmv, .vob, .dvr-ms, MPEG1 and MPEG2 formats) on your computer. (You may need to install a special decoder to view .avi, .divx and .dvr-ms files.) You may also watch a DVD image from your hard drive using CyberLink PowerCinema. Select **Videos** on the Home page to open the Videos function.



Watching Videos



Select a video file and select **Play Video** to play it. Use the playback controls or the buttons on the remote to control playback. To return to the Videos page, select **Stop**.

When you watch a video file, the following special control is added to the pop-up control panel:  **Snapshot** (takes a snapshot of the current frame of video; this function requires a mouse to use).

Browsing for Videos

To change the order in which items are displayed, use the **Sort By...** option. Selecting a video file provides you with three options. Select **Play Video** to play a video file at full screen. Use the pop-up control panel to control playback. To return to the Videos page, select **Stop**. When selecting the file you want to play, you can choose to Play the file or resume the video from the point you previously stopped watching it. Select **Delete** to remove the video file from the video folder.

To view videos in the My Videos folder on your computer, select **My Videos**. To display videos that you have recently viewed, select **Recent Videos**. To view videos that are located in other folders, select **More Videos**. Browse through the drives and folders to locate the videos you want to watch.

Capturing Videos

CyberLink PowerCinema lets you capture high-definition, digital and analog video from external devices and create video files on your computer.

To capture video from an external device:

1. Select **Capture Device**.
2. Select the device where the external video is being inputted into your computer. The video window will be displayed previewing the video you want to capture.
3. Use the player controls on the bottom of the screen to record the video as required. The recorded video will be saved to your default video folder.

Video Settings



The **Default Video Folder** option sets the folder that appears by default when the Videos function is opened. To change folders, select the arrow next to this option, then select a new folder.

Note: It is recommended that you set this option to either the folder you most commonly use or to a top-level directory (such as your C: drive) to reduce the number of folders you need to search through.

When the **Play Video in Subfolders** option is set to **Yes**, video files in all of the subfolders contained in the selected directory are also played. When set to **No**, only the video files in the selected directory are played.

The **Recording Quality** option allows you to set the quality of video captured on your computer. Selecting a higher quality results in a larger recorded file.

Load Default Settings returns the settings on this page to their original values. If you modify any settings on this page, you must select **Apply** for these changes to take effect.

Chapter 5:

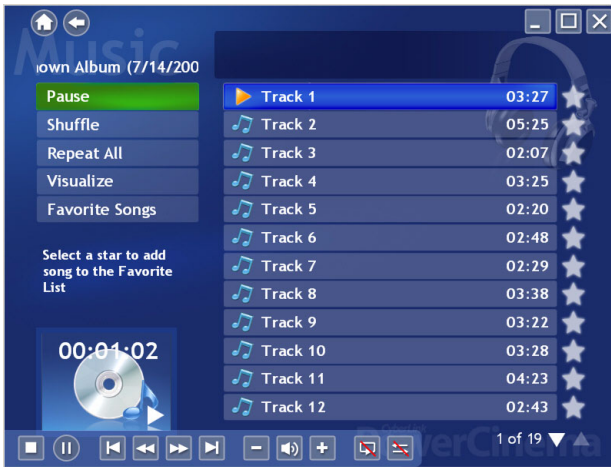
Music

For convenient access to your music collection, use CyberLink PowerCinema's Music function. The Music function allows you to listen to music files (in .asf, .mp3, .wav and .wma formats), rip Audio CDs, and even use playlists (in .asx, .m3u, and .wmp formats) to listen to your favorite songs in any order you like. Select **Music** on the Home page to open the Music function.



You can list the music files by Album, Artist, Genre or Recent music. All Songs sorts available music by song title.

Listening to Music



Select a song in a list (or a track on a CD) to listen to that individual song. Select **Play** to listen to a list of songs from the top. Select **Shuffle** to play songs in random order. Select **Repeat All** to repeat a list of songs after the entire list has played. Select **Visualize** to display a computer-generated visualization while you listen to music. Select **Favorite Songs** to display a list of your favourite songs. A song can be added to your favorites by selecting the star next to the song in the playlist.

To display the most recent music that you have listened to, select **Recent Music**. To sort music, select **Album**, **Artist**, **Playlist**, or **Genre** on the left side of the music page. **All Songs** lists all available music by song title.

Browsing for Music

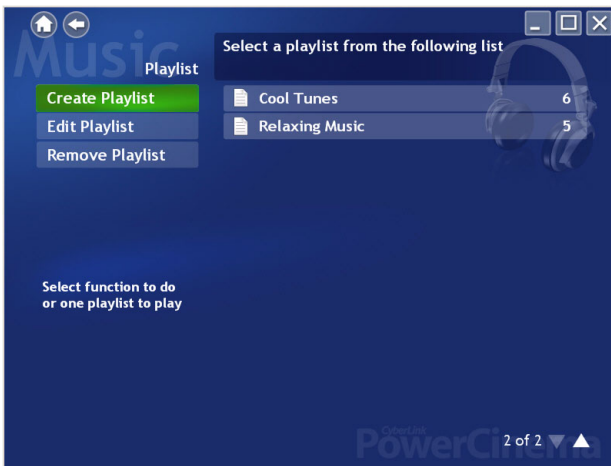
To listen to music that is located in other folders, select **More Music**. Browse through the drives and folders to locate the music you want to listen to.

Watching Visualizations

Visualize allows you to watch computer-generated visualizations while you listen to music. To exit the visualization press **Esc** or **Backspace** on the keyboard.

Using Playlists

CyberLink PowerCinema lets you customize your songs into playlists. This feature allows you to sequence songs from different sources into a single playlist for your listening enjoyment. CyberLink PowerCinema also lets you use the playlists you previously created in Windows Media Player. To view the available playlists, select **Playlist** on the Music page.



Create a Playlist

To create a new playlist in CyberLink PowerCinema

1. Select **All Songs** on the Music main page and then begin selecting the songs you want to include in your playlist by selecting the star beside it.

2. Select **Favorite List** to add the selected songs to your favorites, reorder the songs as desired by using the arrows on the right, then select **Save to Playlist**.
3. Select **Create Playlist** to create a new playlist. In the Playlist window, enter a name for your playlist.
4. Select OK to save the new playlist.

Play a Playlist

To play a playlist, select **Playlist** on the main Music page, then select a playlist from the list.

Edit a Playlist

To edit a playlist in CyberLink PowerCinema

1. Select **Playlist** and select **Edit Playlist**. Choose the playlist you want to edit.
2. Uncheck the songs you want to remove from the playlist.
3. Select **Apply** to apply your changes.

Delete a Playlist

To delete a playlist in CyberLink PowerCinema

1. Select **Playlist** and select **Remove Playlist**.
2. Check the playlist you want to delete from CyberLink PowerCinema.
3. Select **Apply** to apply your changes.

Ripping Audio CDs

To rip an audio CD to your hard drive:

1. Select **More Music** and select the Audio CD displayed in the content area.
2. Select **Rip CD**.
 - In the window that opens, select tracks for ripping. Use **Select All** or **Deselect All** to manage all tracks simultaneously. (Checked tracks are ripped, unchecked tracks are not ripped.)
3. Select **Start Ripping**. Tracks are copied into a new folder under the My Music folder and organized in CyberLink PowerCinema.

Note: This function is only available when an Audio CD is inserted in your disc drive.

Sync & Go

Sync & Go lets you synchronize your music files in CyberLink PowerCinema with a removable device.



When you connect a removable device to your computer, you will be asked whether you want to synchronize your music files or browse the current files on the removable device. You can also select **Sync & Go** on the Music page to begin synchronizing your music if you already have a removable device connected.

In the Sync Files window the amount of space available on your removable device is displayed in the bottom left hand corner. Choose the type of files you want to export and then select **Sync to Device**. Before proceeding, you will be asked if you want to remove all files previously synchronized by CyberLink PowerCinema.

CyberLink PowerCinema will proceed to export all the selected files to your removable device. When complete, a message will be displayed. Select **OK** to return to the Music page or **Browse Files** to view the music files on your removable device.

To listen to a music file on your removable device, choose the file and then select **Play**.

Music Settings



When the **Play Music in Subfolders** option is set to Yes, music files in all of the subfolders contained in the selected directory are also played. When set to No, only the music files in the selected directory are played.

Visualizations selects the computer generated visualizations that displays while you listen to music.

The **Ripping Quality** option allows you to set the quality of music ripped from an audio CD. Selecting a higher quality results in a larger music file.

Ripping Destination sets the folder where music files ripped from an Audio CD are saved by default.

Note: It is recommended that you set this option to either the folder you most commonly use or to a top-level directory (such as your C: drive) to reduce the number of folders you need to search through.

Search for Music scans your computer for music files that can be played in CyberLink PowerCinema.

Load Default Settings returns the settings on this page to their original values. If you modify any settings on this page, you must select **Apply** for these changes to take effect.

Chapter 6:

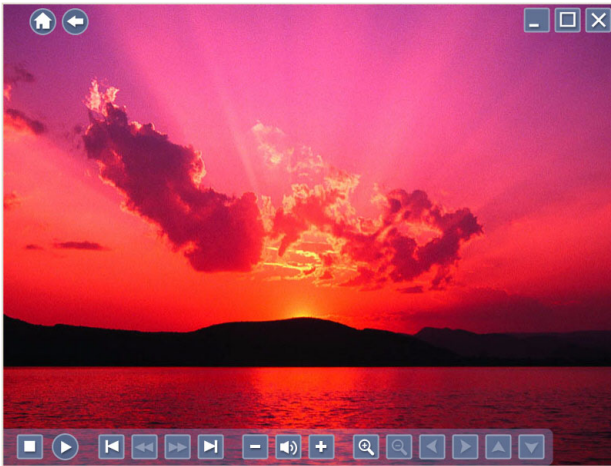
Pictures






CyberLink PowerCinema lets you view digital pictures (in BMP, JPEG, and PNG formats), either individually or as a slide show. You can even edit pictures to make them perfect for display. Select **Pictures** on the Home page to open the Pictures function.



Viewing Pictures

To view pictures in a slide show, select the folder containing the pictures you want to view, then select **Play Slide Show**. The slide show plays at full-screen. Use the playback controls to control or quit the slide show. Selecting an individual picture displays it at full-screen in a paused slide show.



When viewing still pictures, the following special controls are added to the pop-up control panel:  **Zoom In**,  **Zoom Out**,  **Pan Left**,  **Pan Right**,  **Pan Up**, and  **Pan Down**. (On the remote, use the **CH/PG Up** and **CH/PG Down** buttons to zoom, and the left/right arrows to pan.)

Browsing for Pictures

To change the order in which items are displayed, use the **Sort By...** option. To view pictures in the My Pictures folder on your computer, select **My Pictures**. To display pictures that you have viewed recently, select **Recent Pictures**.

To view pictures that are located in other folders, select **More Pictures**. Browse through the drives and folders to locate the pictures you want to view.

Editing Pictures

To edit a picture, select **Edit**, then select the picture you want to modify.



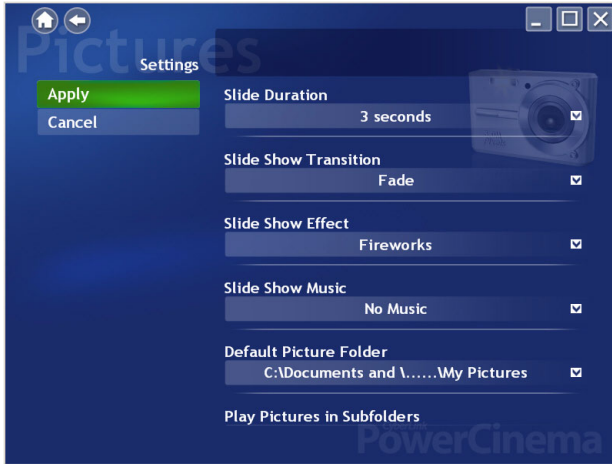
Note: To make modifications permanent, you must select **Save**.

Editing options may include the following:

- **Rotate:** rotates the picture ninety degrees to the right.
- **Auto Fix:** automatically balances the picture's color and brightness.
- **Remove Red-Eye:** removes the red-eye created in flash photography.

To undo a modification you have performed on a picture, select **Undo**. Select **Previous** or **Next** to continue editing other pictures.

Picture Settings



Slide Duration determines how long each slide in a slide show is displayed before automatically advancing.

Slide Show Transition sets the style of transition used between slides in a slide show.

Slide Show Effect sets the type of effect used on your photos during the slide show.

Slide Show Music allows you to select the drive and directory that contains the background music for your slide show.

The **Default Picture Folder** option sets the folder that appears by default when the Photos function is opened. To change folders, select the arrow next to this option, then select a new folder.

Note: It is recommended that you set this option to either the folder you most commonly use or to a top-level directory (such as your C: drive) to reduce the number of folders you need to search through.

When the **Play Pictures in Subfolders** option is set to **Yes**, images in all of the subfolders contained in the slideshow directory are also displayed in the slideshow. When set to **No**, the slideshow only plays the photos in the directory you select.

Load Default Settings returns the settings on this page to their original values. If you modify any settings on this page, you must select **Apply** for these changes to take effect.

Chapter 7:

Radio

PowerCinema lets you listen to the radio on your computer. You can listen to the radio, add stations to your list of Favorites and schedule automatic recordings. Select **Radio** on the Home page to open the main Radio page.



Listening to the Radio

All Stations displays all available radio stations. Select a station in the list to listen to it. **Favorites** displays the radio stations you add to this special list, and opens by default whenever you open the Radio function.

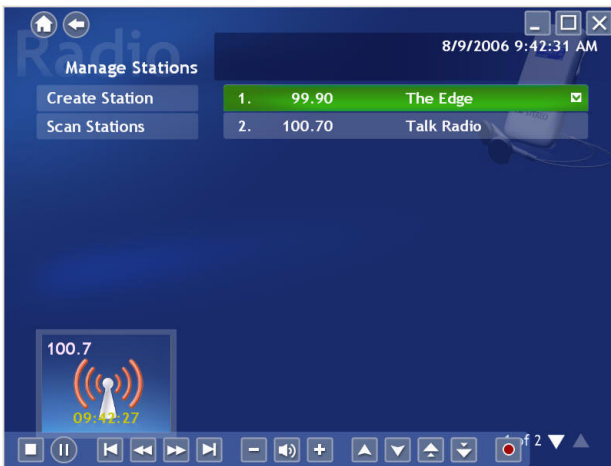
Recorded Radio allows you to listen to audio files that you have recorded from the radio. Select a file in the list to listen to it. Select **Play** to listen to the list of recorded files from the top. Select **Shuffle** to play files in random order. Select **Repeat All** to repeat the list of recorded files after the entire list has played. Select **Visualize** to display a computer-generated visualization while you listen to the radio. Select **Favorite Songs** to display a list of your favorite songs recorded from the radio. A song can be added to your favorites by selecting the star next to the song in the playlist.

Radio Time-Shifting

The CyberLink PowerCinema Radio feature supports always time-shifting, so you won't miss any moments of your favorite radio program. All radio broadcasts are automatically recorded as files, creating a slight lag between the broadcast and the radio content that you are listening to. Using the controls on the bottom left of your screen, you can pause the broadcast, or navigate forward and backward to re-listen to content or to skip over commercials

Managing Radio Stations

Manage Stations allows you to organize radio stations. A star indicates those stations that have been added to the Favorites list. Selecting a station in the list displays the following options: **Add to Favorites** (adds the station to your list of Favorites), **Delete** (removes the station from PowerCinema), and **Edit** (allows you to change the frequency and name).

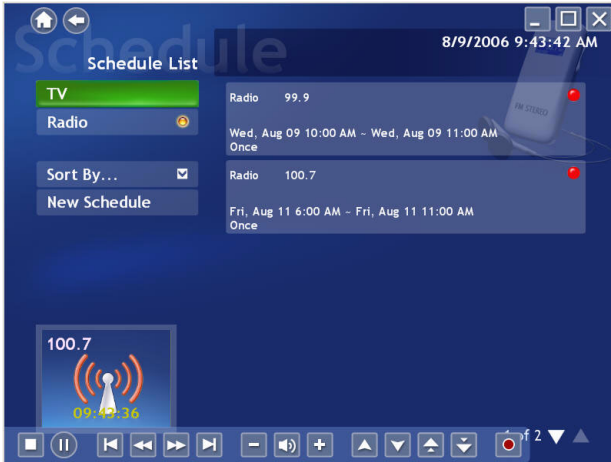


Add a New Station

To add a new radio station to the list of available stations, select **Create Station**. The new station appears in the list of available radio stations. Enter the station's frequency, then press **Enter** on the keyboard or remote. Enter the station's name, then press **Enter** on the keyboard or remote.

If no station list exists, select **Scan Stations**. Your computer will scan and list all available radio stations.

Radio Recording Schedules



To set a recording schedule, select **Schedule**, then **New schedule**. (Make sure that **Radio** is selected.) In the page that opens, select the Channel you want to record, the Scheduling Interval, and the recording date and times. Select **Apply** to activate the recording schedule, or **Cancel** to quit without accepting the schedule.

Select an existing recording schedule to open it for modification. Select **Delete** to remove a recording schedule you have previously created.

Radio Settings



Fine-Tuning Scale sets the increment used for tuning radio stations.

The **Recording Format** option allows you to set the recording format and quality of the audio recorded from the radio. Selecting a higher quality results in a larger recorded file.

Recording Destination sets the folder where audio files recorded from the radio are saved. Select **Scan Stations** to scan and list the available Radio stations.

Load Default Settings returns the settings on this page to their original values. If you modify any settings on this page, you must select **Apply** for these changes to take effect.

Chapter 8:

News

CyberLink PowerCinema lets you view news feeds from a variety of sources, including XML web pages, RSS, ATOM and RDF feeds. Select **News** on the Home page to open the main News page.



Viewing the News

Select a news category and then **All News** to view all the latest available news headlines from that category. Or select the specific news feed from the category list to view all the news from that feed. Select Refresh to update the list and display the latest news stories.



To view a news story, select it and it will be displayed within the News page. If you would like to zoom out or in for enhanced readability of the news story, select Menu and then either **Zoom Out** or **Zoom In**.

Select **Menu > Next News** to display the next available news story.

Select **Menu > Previous News** to display the previous news story.

To save a news story for future viewing, select **Menu**, then **Save To News List**. To view or remove saved news stories, select **Saved News List** on the main News page.

News Settings



Select the news categories you would like displayed on the News page. To edit or remove a news category, select it and choose the desired action.

To edit the feeds available for a news category, select it and then choose **Edit Category List**. Add or remove the web sites to the category by selecting or deselecting them to edit the available feeds for that category. Use the arrows on the right hand to change the order in which the news categories are displayed. Select **Update** to save your changes.

The **Update All** option allows you to refresh the news feed list to display any new news feeds and categories that may be available.

Import News Feeds

The **Import Feeds** option allows you to import news feeds from a file on your computer. To import feeds:

1. Select **Import Feeds**.
2. Choose the drive and folder where the feed is located.
3. Select the feed.
4. Select Back to save your changes.

Export News Feeds

The **Export Feeds** option allows you to export all news feeds to a file on your computer in the Outline Processor Markup Language (.opml) format. To export your news feeds, select **Export Feeds** and then select the folder location you would like to save your feed to.

Chapter 9:

Weather

CyberLink PowerCinema lets you view current weather conditions and forecast information for multiple cities on your computer. Select **Weather** on the Home page to open the main Weather page.



Viewing the Weather

Current displays the detailed current weather conditions in your default city. Select **Forecast** to display the weather forecast information for this city.

Select **Next City** to display the weather information for the next city in your **City List**. Select **Previous City** to display the weather information of the most recently viewed city.

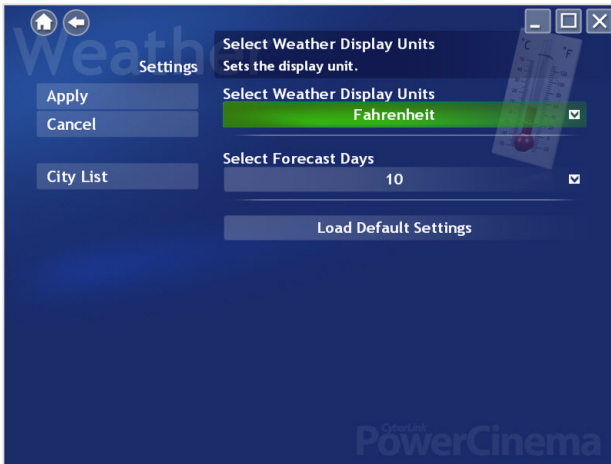
Note: The city weather information displayed on the CyberLink PowerCinema main page will automatically be set to the last city you view on the Weather page.

Adding a new city to the City List

To add a new city to the list:

1. Select **Add New City** then **Input New City**.
2. Enter in the city name, select Enter and then select the city.
3. Select **Save City** to add the city to the City List.

Weather Settings



Select Weather Display Units allows you the option of displaying the city temperature in Celsius or Fahrenheit.

The **Select Forecast Days** option allows you to select the number of forecasted days that will be displayed. You may choose to display up to 10 days of a city's weather forecast.

The **City List** option allows you to select which cities weather and forecast information are available in the Weather window. Select the city name to add or remove it from the list. Use the arrow buttons on the right to change the display order of the available cities. Select **Apply** to save changes.

If you make any modifications on the settings page, you must select **Apply** for these changes to take effect.

Chapter 10:

Extras

The Extras function displays extra features for enhancing the functionality of CyberLink PowerCinema. Select **Extras** on the Home page to open the Extras function.



Note: You must be connected to the Internet to explore many of these extra features.


Extras Content

Content on the Extras page includes product upgrades and patches to improve CyberLink PowerCinema's functionality. Select an upgrade or a patch to begin the download process. Select a program in the content area to launch it.

You can select from the following headings:

- **Store:** The Store displays products that are available for purchase. Select an item to begin the purchasing procedure.
- **Movies:** The Movies feature displays movies that are available for purchase. Select an item to begin the purchasing procedure.
- **Music:** The Music feature displays songs that are available for purchase. Select an item to begin the purchasing procedure.
- **Downloads:** The Downloads feature displays patches or plug-ins that are available for purchase. Select an item to begin the purchasing procedure.
- **Support:** The Support feature displays a link to CyberLink's technical support page.
- **More Programs:** The More Programs feature displays programs that are available for purchase. Select an item to begin the purchasing procedure.

Since the content in the Extras function is constantly changing, be sure to visit often for regular updates, or just to check out the various links.

When the Extras page contains updated information, an icon  appears next to **Extras** on the Home page.

Technical Support

This chapter contains technical support information. It includes all the information to find the answers you need to assist you. You may also find answers quickly by contacting your local distributor/dealer.

This chapter contains the following sections:

- "Before Contacting Technical Support" on page 76
- "Web Support" on page 77
- "Telephone Support" on page 78

Before Contacting Technical Support

Please take advantage of one of CyberLink's free technical support options:

- consult the User Guide or the online help installed with your program.
- refer to the Frequently Asked Questions (FAQs) in the Support section of the [CyberLink Web site](http://www.cyberlink.com) or <http://www.cyberlink.com>.

The FAQs may have information and helpful hints that are more current than the User Guide and online help. If the FAQs do not answer your questions, you can submit a free e-mail request from the main FAQ page.

When calling for support, please have your computer and the following information ready:

- registered **CD-key** (located on your CD case)
- the product name, version and build number, which generally can be found by clicking on the product name image on the user interface
- the version of Windows installed on your system
- hardware devices on your system (capture card, sound card, VGA card) and their specifications
- the wording of any warning messages that were displayed (You may want to write this down or take a screen capture)
- a detailed description of the problem and under what circumstances it occurred

Web Support

Solutions to your problems are available 24 hours a day at no cost on the CyberLink web sites:

Note: You must first register as a member before using CyberLink web support.

Technical Inquiry Form

For your assistance, you may complete the Inquiry Form in the Support section of the CyberLink web site.

<http://www.cyberlink.com/english/cs/support/form/index.jsp>

The more accurate and detailed the information you provide, the better we can help to solve your problem.

General Support

Please visit the support section of the CyberLink web site to view all the support options that are available to you.

<http://support.cyberlink.com>

In addition to frequently asked questions, the CyberLink web site also provides troubleshooting techniques, the latest in product news and other relevant information.

Telephone Support

In order to provide the best solution to our end-users, **Voice Support** is now part of the service we provide.

For only US\$29.95, you will receive two months of **Voice Support** that allows you the opportunity to call as often as necessary. The fee covers all the CyberLink software you may own.

Note: This service is for North American users only.

See the voice Support section on the CyberLink Web site for more information on [Voice Support](#) or <http://support.cyberlink.com>.

Index

A

- About PowerCinema 16
- All News 66
- Always on Top 22, 36
- Angle 36
- Audio 22, 36
- Audio Input 31
- Audio Settings 15, 18
- Auto Fix 56
- Auto Hide Twin TV In Full Screen 32

B

- Blue button 29
- Browsing
 - Media Content 13
 - Music 44
 - Pictures 55
 - Videos 40
- Burn to Directly to Disc 33

C

- Capture Device 41
- Capturing Videos 41
- City List 71
- CLEV-2 17
- Closed Captions 38
- CLPV 16
- Color Profile 17
- Commercial Cut 29

D

- Default Folder
 - Picture 57
 - Video 42
- Deselect 32
- Disable a channel 32
- Display Settings 15
- Display Upon Mute 38
- Downloads 74

E

- edit a picture 56
- Edit Feed List 67
- Electronic Program Guides (EPG) 26
- Elevated 38
- Enable Time-Shifting 32
- EPG
 - Provider 34
 - Source 34
- Extras 73

Download 74
More Programs 74
Movies 74
Music 74
Store 74
Support 74

F

Find Program 26
Fine-Tuning Scale 63

G

General Settings 15
Green button 29
Guide Settings 34

H

Home Page 12

I

Import Feeds 67
Instant Replay 27

L

Language 36
Language Settings 15
Letterbox 16
Listening to Music 44
Listening to the Radio 60

M

Main Menu 36, 37
Manage Channels 32
Managing Radio Stations 61
Menu 22
Mono 31
More Programs 74
Movie Display Type 16
Movies 35, 74
Movies Settings 38
Music 43, 74
Music Settings 50

N

Navigation Controls 13
News 65
News Settings 67
Next SubPage 29

P

Pan

- Down 54
- Left 54
- Right 54
- Up 54
- Pan & Scan 16
- Picture Settings 57
- Pictures 53
- Play Music in Subfolders 50
- Player Controls for Mouse Use 14
- Playlist
 - Create 45
 - Delete 46
 - Edit 46
 - Play 46
- PowerCinema Help 15
- Previous SubPage 29

R

- Radio 59, 65
- Radio Settings 63
- Radio Time-Shifting 60
- Recorded TV 24
- Recording Destination 33, 63
- Recording Format
 - Radio 63
- Recording Quality 33, 42
 - TV 33
 - Videos 42
- Recording Schedules
 - Radio 62
 - TV 25
- Recording Settings 33
- Red button 29
- Region 31
- Remote Control 14

- Remove Red-Eye 56
- Rename a channel 32
- Restart 37
- Resume 37
- Ripping
 - Audio CDs 47
 - Destination 50
 - Quality 50
- Rotate 56
- Run Setup Wizard 15

S

- SAP 31
- Saved News List 66
- Scan Channels 32
- Screen Ratio 16
- Search for Music 50
- Select Captured Teletext Format 33
- Select Forecast Days 71
- Select Weather Format 71
- Settings
 - Audio 18
 - General 15
 - Movies 38
 - Music 50
 - News 67
 - Pictures 57
 - Radio 63
 - TV 31
 - Video 42
 - Weather 71
- Signal Settings 31
- Skin Color 17
- Slide Show
 - Duration 57

- Effects 57
- Music 57
- Transition 57
- Snapshot 22, 29, 36
- Stereo 31
- Store 74
- Style 17
- Subfolders
 - Play Pictures 58
 - Play Videos 42
- Subtitle 22, 36
- Subtitles 36
- Support 74
- Sync & Go 48

T

- TeleText 22, 29
- Time-Shifting
 - enable 32
- Triple TV 28
- TV 21
 - Recording Schedules 25
- TV Settings 31
- Twin TV 27

V

- Video Settings 42
- Videos 39
- Viewing Pictures 54
- Viewing the News 66
- Viewing the Weather 70
- Visual Effect 17

- Visualizations 50
- Visualize 45

W

- Watching
 - Movies 36
 - TV 22
 - Videos 40
 - Visualizations 45
- Weather 69
- Weather Settings 71

Y

- Yellow button 29

Z

- Zoom
 - In 54
 - Out 54