

**CyberLink**  
**Power2Go**  
User's Guide



# Copyright and Disclaimer

All rights reserved. No part of this publication may be reproduced, stored in a retrieval system, or transmitted in any form or by any means electronic, mechanical, photocopying, recording, or otherwise without the prior written permission of CyberLink Corporation.

To the extent allowed by law, Power2Go IS PROVIDED "AS IS," WITHOUT WARRANTY OF ANY KIND, EITHER EXPRESS OR IMPLIED, INCLUDING WITHOUT LIMITATION ANY WARRANTY FOR INFORMATION, SERVICES, OR PRODUCTS PROVIDED THROUGH OR IN CONNECTION WITH POWER2GO AND ANY IMPLIED WARRANTIES OF MERCHANTABILITY, FITNESS FOR A PARTICULAR PURPOSE, EXPECTATION OF PRIVACY, OR NON-INFRINGEMENT.

BY USING THIS SOFTWARE, YOU AGREE THAT CYBERLINK WILL NOT BE LIABLE FOR ANY DIRECT, INDIRECT, OR CONSEQUENTIAL LOSS ARISING FROM THE USE OF THIS SOFTWARE OR MATERIALS CONTAINED EITHER IN THIS PACKAGE.

The terms and conditions here under shall be governed and construed in accordance with the laws of Taiwan.

Power2Go is a registered trademark along with other company and product names mentioned in this publication, used for identification purposes and remain the exclusive property of their respective owners.

## International Headquarters

<b>Mailing Address</b>	CyberLink Corporation 15F, #100, Minchiuan Road, Shindian City Taipei 231, Taiwan
<b>Web Site</b>	<a href="http://www.cyberlink.com">www.cyberlink.com</a>
<b>Telephone</b>	886-2-8667-1298
<b>Fax</b>	886-2-8667-1300

Copyright © 2007 CyberLink Corporation. All rights reserved.

# Contents

## **Introduction..... 1**

Welcome .....	2
The Power2Go Program .....	3
Power2Go Tasks .....	4
Latest Features .....	5
Supported Media .....	6
Supported File Types .....	6
Supported Disc Types .....	6
System Requirements .....	7

## **Power2Go Program ..... 9**

Power2Go Express & Sidebar Gadget .....	10
Power2Go Sidebar Gadget .....	10
Power2Go Express .....	13
Power2Go Mode .....	17
Select a Burning Task Window .....	17
Power2Go Buttons .....	18
Burn a Data Disc .....	20
Burning a Data Disc .....	20
Burning a Bootable Data Disc .....	21
Burn a Secured Data Disc .....	22
Burn a Music Disc .....	26
Burn an Audio CD or MP3/WMA Music Disc .....	26
Burn a Video/Photo Disc .....	29

Burning a Video/Photo Disc .....	29
Burning a DVD Folder .....	32
Copy Disc .....	34
Copying Discs .....	34
Saving a Disc Image .....	35
Burning a Disc Image .....	36
Burn a Mixed Disc .....	38
CD Extra & Mixed Mode CD .....	38
HighMAT CD .....	40
Disc Utilities .....	42
Erasing a Disc .....	42
Ripping Audio .....	43
Converting Audio Files .....	44
Additional Burning Notes & Features .....	45
Multisession Discs .....	45
Support Multiple Instances .....	45

## **Configuration ..... 47**

Power2Go Preferences .....	48
Configuration Options .....	52

## **Technical Support..... 65**

Before Contacting Technical Support .....	66
Web Support .....	67

## **Index ..... 69**

## Chapter 1:

# Introduction

This chapter introduces the CyberLink Power2Go program, starting with a description of the program's main windows and tasks, and also includes an overview of its newest features. The chapter ends with a list of supported media and recommended system minimum requirements.

This chapter contains the following sections:

- "Welcome" on page 2
- "The Power2Go Program" on page 3
- "Supported Media" on page 6
- "System Requirements" on page 7

# Welcome

Welcome to the CyberLink family of digital video tools. CyberLink Power2Go lets you burn music, data, video and even bootable discs in a variety of formats, including CD, DVD or Blu-ray Disc. CyberLink Power2Go also includes several handy disc utilities and an express mode that makes burning convenient and easy.

CyberLink Power2Go's main features include the following:

- burns data, music, movie and mixed media discs
- converts audio files to and from the MP3, WAV and WMA formats as well as different qualities
- advanced file search, navigation and tracking
- burn secure discs
- erases discs that contain unwanted content
- copies entire discs and creates slideshows from individual photo files
- Power2Go Express mode supports drag-and-drop to desktop icons for burning in the fewest number of steps
- Power2Go Express in Windows Vista Gadgets sidebar for quick and convenient burning
- burns DVD folders to disc
- supports CD text for additional textual information (such as a description of the artist or song) with audio tracks

CyberLink Power2Go lets you create and burn many different types of discs in a variety of formats. To get started, all you need is to have your disc and media ready, CyberLink Power2Go does the rest.

# The Power2Go Program

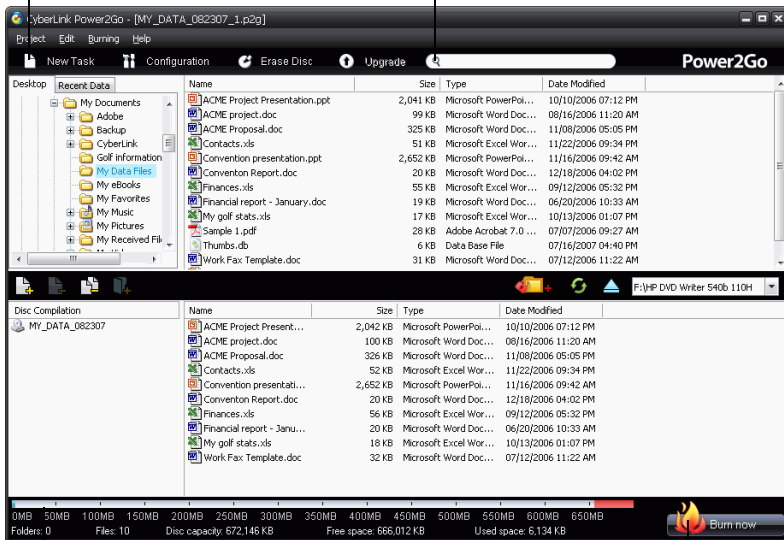
CyberLink Power2Go has several windows that vary slightly in appearance. However these windows have several consistent features that make your burning experience more convenient.

## Quick Task Buttons

These buttons provide quick access to a few often used tasks

## Search

Allows you to perform a quick search for file you want to add to your disc



## Disc Capacity Bar

Displays a graph of the current and maximum capacity of the disc

## Burn Now Button

When you're ready, click the Burn Now button to burn your disc

The CyberLink Power2Go program can run in one of two modes:

- **Power2Go Express & Sidebar Gadget**
- **Power2Go Mode**

Power2Go Express mode is the simpler of the two modes, allowing you to burn discs in just two steps. Power2Go Mode provides access to more options and disc utilities in the Select Burning Task window.

## Power2Go Tasks

The following is a list of the main tasks performed by CyberLink Power2Go:



The **Data Disc** task allows you to burn data files to a CD, DVD, Blu-ray Disc. Data files can include images and any other document files.



The **Music Disc** task allows you to burn audio files in MP3, WMA or WAV format to a CD or DVD. You can also burn audio from video files.



The **Video/Photo Disc** task allows you to burn movie files to CD/DVD. You can also burn a slideshow to disc or create a DVD folder.



The **Copy Disc** task allows you to make an exact copy of a disc of any format. It also allows you to create or burn a disc image.



The **Mixed Disc** task allows you to burn mixed content to CD. The different disc formats (CD Extra, Mixed Mode CD and HighMAT CD) allow you to burn different types of media to the same disc.



The **Disc Utilities** task includes a number of useful features including erasing discs, ripping audio from CDs and converting audio from one format to another.

---



# Latest Features

This section describes the latest features in the CyberLink Power2Go program.

## **New Features for Added Convenience**

- Advanced file search, browsing and tracking using the CyberLink Media Library service
- Power2Go Sidebar Gadget on the Windows Vista Sidebar.

## **Data Burning**

- Advanced data file tracking and browsing, allowing you to quickly burn recently created or opened data files
- Burns Blu-ray Discs
- Burn up to three discs at one time on separate devices

## **Secured Data Burning**

- Burning partially or fully secured CDs, DVDs, Blu-ray Discs
- Password protection and filename encryption
- Built-In security browser on disc

## **Music Burning**

- Advanced audio file tracking and browsing, allowing you to burn music by album, artist, genre, recently added or year
- Burning music CDs using audio from video clips

## **Video Burning**

- Video trimming
- Thumbnail image setting for VCD/DVD menus
- Chapter-based DVD movie authoring for better navigation

# Supported Media

The specific media that is supported by your version of CyberLink Power2Go 6 is dependant on the version installed on your computer. To determine which version you have, click on the CyberLink Power2Go logo within the main window and then check the ReadMe file for specific versioning information.

## Supported File Types

Except when creating data discs (which can accept any kind of file type), the following is a list of the file types that can be imported when creating a music disc, video disc, photo disc, etc.

- **Music formats:** .MP3, .WMA, .WAV
- **Video formats:** .AVI, .DAT (MPEG-1), .MPE, .MPG, .MPEG, .MPEG-2, .WMV, .DVR-MS
- **Image formats:** .BMP, .GIF, .JPE, .JPEG, .JPG, .PSD

## Supported Disc Types

CyberLink Power2Go 6 supports the burning of the following disc types:

- **CD:** CD-R/RW
- **DVD:** DVD-R/RW, DVD-R/RW DL, DVD+R/RW, DVD+R/RW DL, DVD-RAM
- **Blu-ray Disc:** BD-R, BD-R DL, BD-RE, BD-RE DL

**Note:** The supported disc types may differ due to the version of CyberLink Power2Go installed on your computer.

# System Requirements

The system requirements listed below are recommended as minimums for burning. You may find that your system, while meeting these recommended minimums, requires expanded capacity during specific burning tasks.

Minimum System Requirements	
<b>OS</b>	<ul style="list-style-type: none"> <li>Windows Vista, XP/2000 (Windows Vista, XP recommended)</li> </ul>
<b>Screen Resolution</b>	<ul style="list-style-type: none"> <li>800 x 600 or higher</li> </ul>
<b>Memory</b>	<ul style="list-style-type: none"> <li>128 MB SDRAM for music and data burning</li> <li>256 MB DDR RAM (512MB recommended) for video burning</li> </ul>
<b>CPU</b>	<ul style="list-style-type: none"> <li>VCD (MPEG-1) production: Intel Pentium II 450 MHz</li> <li>DVD (MPEG-2) production: Intel Pentium III 800 MHz, or AMD Athlon 700 MHz (Intel Pentium 4 2.0 GHz, or AMD Athlon 2100+ or above recommended)</li> </ul>
<b>HDD Space</b>	<ul style="list-style-type: none"> <li>1 GB for making VCD videos</li> <li>5~10 GB for making DVD videos</li> <li>25 GB for making Blu-ray Discs</li> </ul>

**Note:** The system requirements are subject to change. Please refer to the CyberLink Power2Go home page ([http://www.cyberlink.com/multi/products/main\\_24\\_ENU.html](http://www.cyberlink.com/multi/products/main_24_ENU.html)) for the most up-to-date system requirements.



## Chapter 2:

# Power2Go Program

CyberLink Power2Go offers a variety of burning functions, including burning data discs, music discs, video/photo discs, mixed discs and bootable discs. You may also copy the entire contents of a disc and create or burn a disc image.

This chapter contains the following sections:

- "Power2Go Express & Sidebar Gadget" on page 10
- "Power2Go Mode" on page 17
- "Burn a Data Disc" on page 20
- "Burn a Music Disc" on page 26
- "Burn a Video/Photo Disc" on page 29
- "Copy Disc" on page 34
- "Burn a Mixed Disc" on page 38
- "Disc Utilities" on page 42
- "Additional Burning Notes & Features" on page 45

# Power2Go Express & Sidebar Gadget

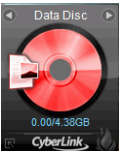

Power2Go Express and the Power2Go Sidebar Gadget make burning discs a quick and easy task. The Power2Go Express icons sit conveniently on your desktop, while the Power2Go Sidebar Gadget is located on the Windows Vista Sidebar.


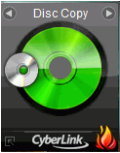

Dragging files in the appropriate formats to the Power2Go Express icons or the Power2Go Sidebar Gadget prepares CyberLink Power2Go to burn a disc.

## Power2Go Sidebar Gadget

For users of Windows Vista, you can add the Power2Go Sidebar Gadget to the Windows Vista Sidebar.

Power2Go Sidebar Gadget uses the following icons:

Sidebar Gadget	Power2Go Function
	Drag data files to this icon to burn a data disc. (See "Burning a Disc with the Power2Go Sidebar Gadget" on page 11.)
	Drag music files to this icon to burn an audio CD music disc. (See "Burning a Disc with the Power2Go Sidebar Gadget" on page 11.)

Sidebar Gadget	Power2Go Function
	Drag video files to this icon to burn a movie disc. (See "Burning a Disc with the Power2Go Sidebar Gadget" on page 11.)
	Click  on the Disc Copy Sidebar Gadget icon to copy a disc. (See "Copy Disc" on page 34.)

## Adding the Power2Go Sidebar Gadget


To add the Power2Go Sidebar Gadget to the Windows Vista Sidebar, do this:

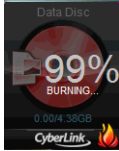
1. Right-click on the Windows Vista Sidebar and then select **Add Gadgets...**
2. In the Sidebar Gadgets window, select the **Power2Go Gadget** icon.
3. Drag and drop the icon on the Windows Vista Sidebar.

## Burning a Disc with the Power2Go Sidebar Gadget

To burn a disc with the Power2Go Sidebar Gadget, do this:



1. Locate the files on your computer that you want to burn.
2. Drag all of the files you want on your disc to the appropriate icon on the Windows Vista Sidebar, i.e. music files to the audio disc icon, video files to the video disc icon.

3. Click  on the Power2Go Sidebar Gadget icon. CyberLink Power2Go will burn your disc.



## Power2Go Sidebar Gadget Burning Notes





The following is some additional information you may want to be aware of when burning with the Power2Go Sidebar Gadget:

- To switch between functions in the Power2Go Sidebar Gadget, click on the arrows at the top of the icon .
- Click on the  icon in the bottom left of the Power2Go Sidebar Gadget to open a window and view a detailed list of the content to be burned.
- All music discs burned with Power2Go Sidebar Gadget are burned in the audio CD format.
- Dragging and dropping video files on the Audio Disc icon will extract and burn the audio from the video files.
- You can drag and drop image files on the Video Disc icon to burn a slideshow, video files to burn a video disc, or both image and video files to burn a disc with both a video and a slideshow.
- Slideshows created in Power2Go Sidebar Gadget have a default slide duration of 3 seconds.



# Power2Go Express

Power2Go Express uses the following icons:

Power2Go Express Icon	Power2Go Function
	Drag data files to these icons to burn a data disc. (See "Burning a Disc in Power2Go Express Mode" on page 13.)
	Drag music files to these icons to burn an audio CD music disc. (See "Burning a Disc in Power2Go Express Mode" on page 13.)
	Drag video files to these icons to burn a movie disc. (See "Burning a Disc in Power2Go Express Mode" on page 13.)
	Double-click the Power2Go Express icon to copy a disc. (See "Copy Disc" on page 34.)

Right-clicking an icon on the desktop opens a command menu to control burning tasks. Click a menu item to perform the corresponding task.



## Burning a Disc in Power2Go Express Mode

To burn a disc in Power2Go Express mode, do this:

1. Locate the files on your computer that you want to burn.

2. Drag all of the files you want on your disc to the appropriate icon on your desktop, i.e. music files to the audio disc icon, video files to the video disc icon.
3. Click **Rec** on the a Power2Go Express Classic icon. CyberLink Power2Go will burn your disc. (Click **Stop** to cancel the burning process.)




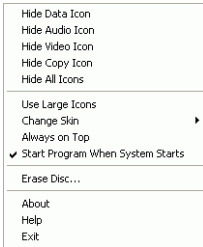
## Power2Go Express Burning Notes

The following is some additional information you may want to be aware of when burning with Power2Go Express:

- You can click and drag the entire column of Power2Go Express icons to a different location on your desktop, or right-click on a single icon to move it individually.
- All music discs burned in Power2Go Express mode are burned in the audio CD format.
- Dragging and dropping video files on the Audio Disc icon will extract and burn the audio from the video files.
- You can drag and drop image files on the Video Disc icon to burn a slideshow, video files to burn a video disc, or both image and video files to burn a disc with both a video and a slideshow.
- Slideshows created in Power2Go Express mode have a default slide duration of 3 seconds.

## Configuring Power2Go Express Classic

Right-clicking the Power2Go Express icon  on the system tray opens a command menu to control Power2Go Express icons, to erase a disc, and to control the Power2Go program.



Use one of the **Hide** options to remove an icon from being displayed on your desktop. (The option then becomes **Show**, allowing you to display the icon again.) You may also choose whether to display large or normal-sized icons on the desktop.

Check the **Always on Top** option to keep CyberLink Power2Go on top of any other programs you are running.

Check the **Start Program When System Starts** option to run Power2Go Express mode whenever you power on your computer.

Click **Erase Disc...** to erase a rewritable disc.

Click **About** to display CyberLink Power2Go version information, click **Help** to open the help file or click **Exit** to close Power2Go Express mode.

## Changing Power2Go Express Skins

Power2Go Express provides you with several different skins that allow you to change the look of the desktop icons.

To use a different skin, do one of the following:

- Right-click the icon on the system tray to open the command menu, select the **Change Skin** option, then select a skin.

- Select **Use Large Icons** or **Use Normal Icons** to change the size of the Power2Go Express icons.
- If you would like to use a custom skin, click the **Browse...** option. In the dialog box that opens, open the skin file you want to use. The Power2Go Express icons will change to the skin you have selected.

# Power2Go Mode

Power2Go mode is the main CyberLink Power2Go program where you can access all of its tasks and features. All of these tasks can be accessed in the Select a Burning Task window, which by default is displayed when CyberLink Power2Go is launched.

## Select a Burning Task Window

The **Select a Burning Task** window displays a program window with a row of options that allow you to access all of CyberLink Power2Go's different tasks.










**Note:** You can prevent the Select a Burning Task window from opening by default by deselecting the **Display this window whenever Power2Go opens** option.





When you close (or disable) the Select a Burning Task window, you can access CyberLink Power2Go's features by using the menu items or by clicking a quick task button.

**Note:** Clicking the **New Task** button opens the Select a Burning Task window.

## Power2Go Buttons

The following table provides an overview of the buttons found within most of the CyberLink Power2Go windows:

Button	Power2Go Function
	Adds the selected files to the disc content window.
	Removes the selected files from the disc content window.
	Clears all the content from the disc content window.
	Creates a folder on the disc to be created. You can then add files into the folder to better organize the content on your disc.
	When creating a music disc, use the up and down buttons to set the playlist order of the music files on your disc.
	When creating a music disc, use these buttons to play, stop and adjust the volume of your music files when previewing them.
	When creating a video/photo disc, use these buttons to move videos left or right in the playback order on the disc.

Button	Power2Go Function
	When creating a video/photo, click the Preview button to watch a preview of the selected video.
	When creating data discs, click this button to create a secure disc to protect your files. See "Burn a Secured Data Disc" on page 22 for more information.
	Refreshes the view of the content in the disc content window.
	Ejects/Closes the disc tray of the indicated disc drive.

# Burn a Data Disc

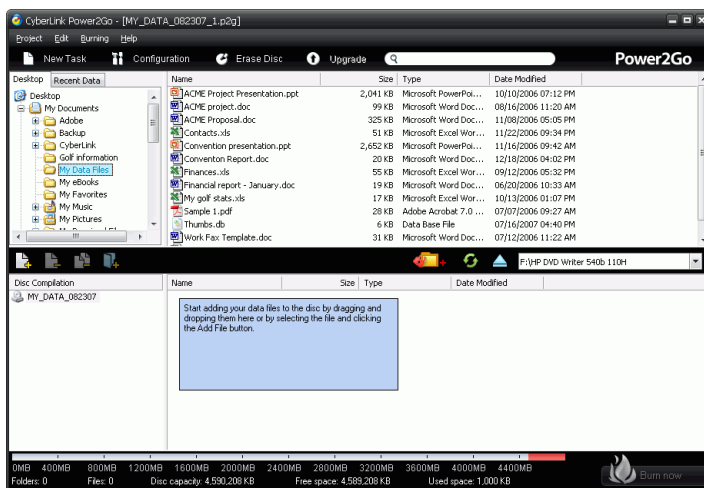
The **Data Disc** option allows you to burn data files to a CD, DVD, Blu-ray Disc. Data files can include images and any other document files.

You can also create a bootable CD, DVD, Blu-ray Disc, which you can use to boot your computer from your disc drive if your operating system ever fails.

## Burning a Data Disc


To burn a data disc, do this:

1. In the Select a Burning Task window, click the **Data Disc** icon and then select the type of disc (**CD, DVD, Blu-ray Disc**) you want to create. The Data Disc window opens.



2. Use the search pane to navigate to the files you want to include on your disc. The **Recent Data** tab allows you to conveniently perform an advanced search for your data files by recently added or opened, using the CyberLink Media Library service.



3. Select the files or folders you want to burn and then drag them to the destination disc or click the add buttons.
4. When you have added all of the content that you want to burn, click .
5. If required, adjust the configurations on the **Data** or **Burner** tabs (See "Configuration Options" on page 52 for more information.)
6. Click **Burn** when you are ready to burn your disc. CyberLink Power2Go will proceed to burn your disc.
7. When burning is complete, select an option in the dialog box that opens:
  - Click **View Log** to view the burning log. The log opens in your default TXT editor, where you can view and save it.
  - Click **OK** to close the dialog and then exit

## Burning a Bootable Data Disc


To burn a bootable data disc, do this:

1. In the Select a Burning Task window, click the **Data Disc** icon, then select **CD, DVD, Blu-ray Disc**.
2. Click the **Configuration** button. The Configuration/Information window opens to the **Data** tab.
3. Select the **Make this disc bootable** option.
4. Then either:
  - select the **Use a bootable image file** option, click **Browse...** and then locate the bootable disc partition.
  - select the **Use a bootable floppy disc** option.

**Note:** If you select the **Use a bootable floppy disc** option, you will be prompted to insert the floppy disc into your floppy disc drive after you click Burn.

5. Click the **OK** button to return to the Data Disc window. If required, add other files or folders to your bootable data disc, however it is not necessary.

**Note:** See "Burn a Data Disc" on page 20 more detailed information on adding files and folders to Data Discs.

6. When you have added all of the content that you want to burn, click .
7. If required, adjust the configurations on the **Data** or **Burner** tabs (See "Configuration Options" on page 52 for more information.)
8. Click **Burn** when you are ready to burn your disc. CyberLink Power2Go will proceed to burn your disc.
9. When burning is complete, select an option in the dialog box that opens:
  - Click **View Log** to view the burning log. The log opens in your default TXT editor, where you can view and save it.
  - Click **OK** to close the dialog and then exit.

## Burn a Secured Data Disc

The secured data disc option allows you to burn password-protected data files to a CD, DVD, Blu-ray Disc.

**Note:** You can choose to secure all or only some of the files on a data disc.


You can also burn secured data disc with encrypted file names. The encrypted file names will be hidden from users, unless they enter the correct password.

**Note:** Bootable data discs are not available for secured data burning.

## Burning a Secured Data Disc

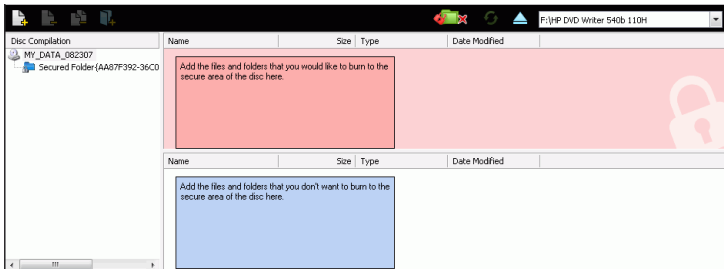
To burn a data disc, do this:


1. In the Select a Burning Task window, click the **Data Disc** icon and then select the type of disc (**CD, DVD, Blu-ray Disc**) you want to create. The Data Disc window opens

- Click the  button and then enter a password for your secured data disc. Re-enter the password again in the **Confirm password** field.

**Note:** Check the checkbox next to **Hide the file names in a secured disc** if you wish to encrypt the file names on your disc.

- Click **OK**. Note that the disc content area is split into two sections.

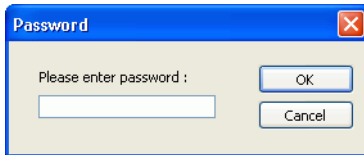


- Use the search pane to navigate to the files you want to include on your disc. Select the files or folders you want to burn and then drag them to either the secured data area (indicated in pink) or the regular non-secured data area.
- When you have added all of the content that you want to burn, click .
- If required, adjust the configurations on the **Data** or **Burner** tabs (See "Configuration Options" on page 52 for more information.)
- Click **Burn** when you are ready to burn your disc. CyberLink Power2Go will proceed to burn your disc.
- When burning is complete, select an option in the dialog box that opens:
  - Click **View Log** to view the burning log. The log opens in your default TXT editor, where you can view and save it.
  - Click **OK** to close the dialog and then exit

## Using a Secured Data Disc

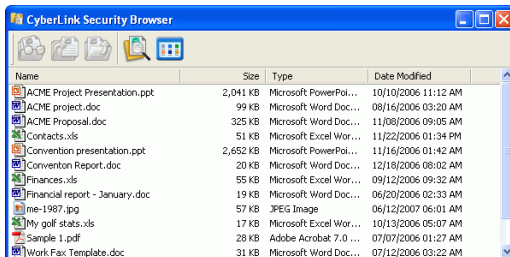
Discs burned with CyberLink Power2Go's secured data burning technology comes with a CyberLink Security Browser, so that you can view the content on the disc.

1. When you insert a secured data disc into the disc drive, the Security Browser will be launched, prompting you for a password.








**Note:** If the Security Browser does not automatically launch when you insert a secured data disc, please navigate to the disc in Windows Explorer and then double-click the SecurityBrowser.exe to launch the Security Browser manually.

2. Enter your password and then click OK. The Security Browser window will be displayed.



**Note:** If you selected to **Hide the file names in a secured disc** when creating the disc, double-click on the secured folder in the list view to view the files.

3. Select the files you want to extract and then click  .

4. Click  to search for files. Type part or all of the name of the file or folder.
  - Click **Size** to look for files of a specific size.
  - Click **Modified Date** to look for files that were created or modified on or between specific dates.
5. Click  to view files without extraction.
6. If your secured data disc has multiple subfolders, click  to go up one level to the previous folder.
7. To change how you view items in the Security Browser, click  .

# Burn a Music Disc

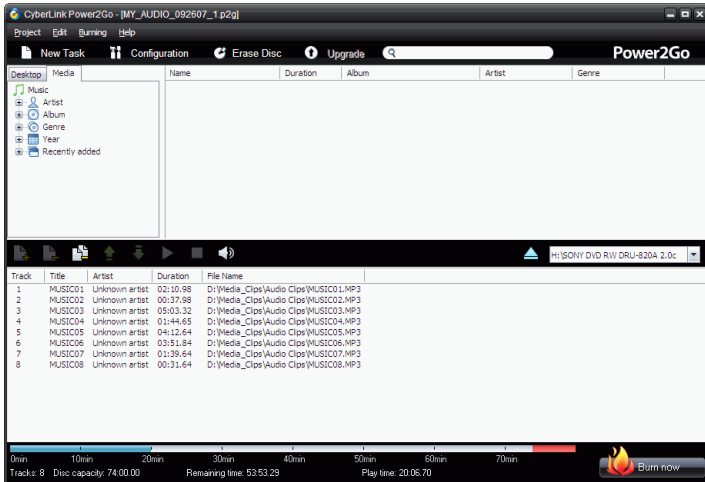
The **Music Disc** option allows you to create an MP3 or WMA CD/DVD from your music files, including extracting the audio from video files. You may also create a traditional audio CD that can be played back on a regular CD player.

## Burn an Audio CD or MP3/WMA Music Disc

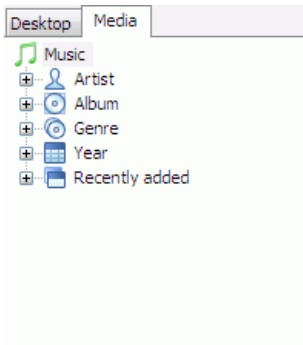
To burn an audio music CD or MP3/WMA music disc, do this:

1. In the Select a Burning Task window, click the **Music Disc** icon and then select whether to:
  - create an audio CD
  - create a WMA CD
  - create an MP3 CD
  - create a WMA DVD
  - create an MP3 DVD

- The Music Disc window will be displayed.



2. Use the search pane to navigate to the files you want to include on your disc. The **Media** tab allows you to conveniently perform an advanced search for your music files by album, artist, genre, recently added or year using the CyberLink Media Library service.



3. Select the audio files you want to burn and then drag them to the destination disc or click the add buttons.

**Note:** To extract the audio from a video clip to your audio CD, simply add the video clip to the disc.

4. When you have added all of the audio that you want to burn, click



5. If required, adjust the configurations on the Music (**Audio CD, MP3 Quality, WMA Quality**) or **Burner** tabs (See "Configuration Options" on page 52 for more information.)
6. Click **Burn** when you are ready to burn your disc. CyberLink Power2Go will proceed to burn your disc.
7. When burning is complete, select an option in the dialog box that opens:
  - Click **View Log** to view the burning log. The log opens in your default TXT editor, where you can view and save it.
  - Click **OK** to close the dialog and then exit.



# Burn a Video/Photo Disc

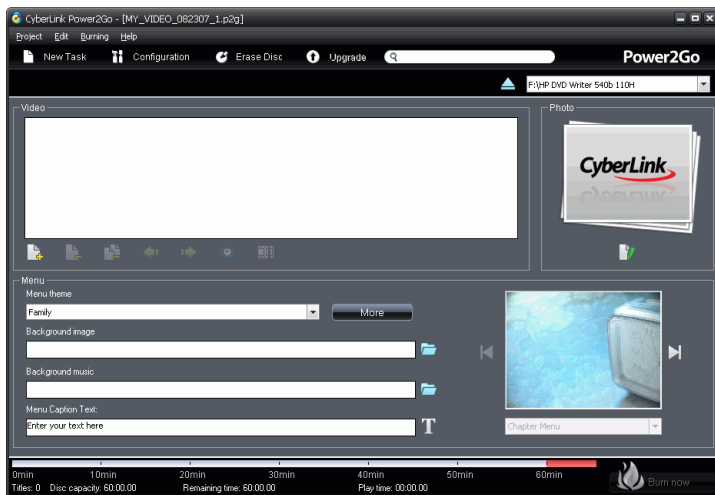
The **Video/Photo** Disc option allows you to burn video files to CD or DVD. You can also create and burn a photo slideshow to disc or burn a DVD folder to DVD.

**Note:** You can burn both video and photo slideshows to the same disc.

## Burning a Video/Photo Disc

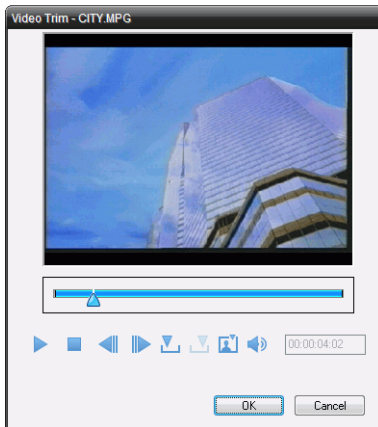
To burn a video/photo disc, do this:

1. In the Select a Burning Task window, click the **Video/Photo Disc** icon. Select either the **Video CD (VCD) Disc** or **DVD-Video Disc** option to open the Video/Photo Disc window.










2. Click  to add video files to your disc.

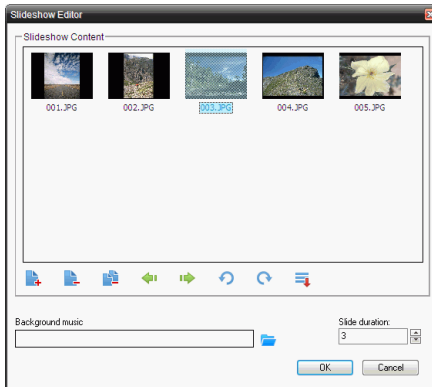
3. To trim video, click . The Video Trim dialog box opens.















**Note:** In your version of CyberLink Power2Go, this feature may be limited or unavailable.

- Use the playback controls to playback the video clip.
- Use the **Previous frame**  and **Next frame**  buttons to move the video one frame at a time.
- To set the **Mark in** point for trimming, click .
- To set the **Mark out** point for trimming, click .
- To set the current video frame as the file's display thumbnail, click .
- To adjust the video file's volume, click .
- Click the **OK** button to close the Video Trim window.

4. To create a picture slideshow, click . The Slideshow Editor is displayed.



5. Click  to add images to the slideshow. Use the following additional buttons to help you create your disc:
- To move a picture left in the slideshow/content window, click .
  - To move a picture right down in the playlist/content window, click .
  - To rotate a picture counter-clockwise, click .
  - To rotate a picture clockwise, click .
  - To sort the photos in the slideshow by name, date, path, etc., click  and select the desired option.
  - To add background music to your slideshow, click  and then locate the music file you want to use.
  - To set the duration each slide will be displayed in the slideshow, enter a time in the **Slide duration** box.
  - Click the **OK** button to close the Slideshow editor and add the slideshow to your disc.
6. To customize your disc menu, do the following:

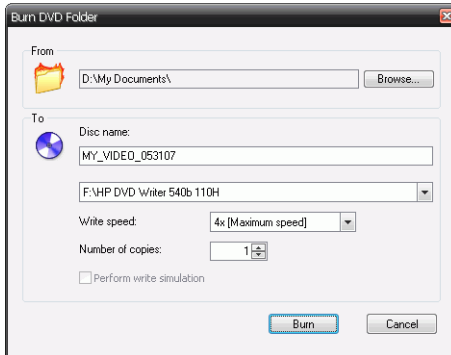
- Select a disc menu theme from the drop-down menu. Click the  or  to scroll through the available disc menus
  - Click  if you want to add your own image as the menu background.
  - Select whether your menu is a **Chapter Menu** (creates clickable thumbnails for each video/slideshow) or **Title Menu** (creates a clickable thumbnail for video and one for slideshow).
  - To add background music to your disc menu, click  and then locate the file you want to use.
  - Add any required menu text in the **Menu caption text** field.
7. When you have added all of the media that you want to burn, click .
8. If required, adjust the configurations on the **Video** (for DVD, for VCD) or **Burner** tabs (See "Configuration Options" on page 52 for more information.)
9. Click **Burn** when you are ready to burn your disc. CyberLink Power2Go will proceed to burn your disc.
10. When burning is complete, select an option in the dialog box that opens:
- Click **View Log** to view the burning log. The log opens in your default TXT editor, where you can view and save it.
  - Click **OK** to close the dialog and then exit.

## Burning a DVD Folder

A DVD folder is a directory folder specifically created to store media content destined to be burned to disc. Using the **Burn DVD Folder** utility, you can burn a DVD folder to a DVD disc.

To burn a DVD folder, do this:

1. In the Select a Burning Task window, click the **Video/Photo Disc** icon. Select the **Burn DVD Folder** option to open the Burn DVD Folder window.



2. Click **Browse...** and then select a DVD folder to burn.
3. Insert your disc and select your drive in the drop-down list.
4. Click **Burn** to start. CyberLink Power2Go will proceed to burn your disc.
5. When burning is complete, select an option in the dialog box that opens:
  - Click **View Log** to view the burning log. The log opens in your default TXT editor, where you can view and save it.
  - Click **OK** to close the dialog and then exit.

# Copy Disc

The **Copy Disc** function allows you to make an exact copy of a disc. However, you must copy the disc contents onto a blank disc of the same disc type. (You cannot, for example, copy content from a CD onto a DVD.) The Copy Disc function also allows you to create or burn disc images.


**Note:** Some discs may not be copied if they are copy-protected or contain errors.

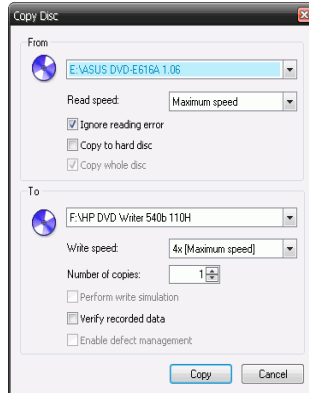
## Copying Discs

The procedures for copying a disc from inside the CyberLink Power2Go program or in Power2Go Express mode are very similar. Only the first step for opening the Copy Disc window is slightly different.

To copy a disc, do this:

1. Open the Copy Disc window.
  - **Power2Go mode:** In the Select a Burning Task window, click the **Copy Disc** icon, then select **Copy Disc**.

- **Power2Go Express mode:** Double-click the **Copy Disc** Power2Go Express Classic icon or click  on the Windows Vista Gadgets sidebar Copy Disc icon.



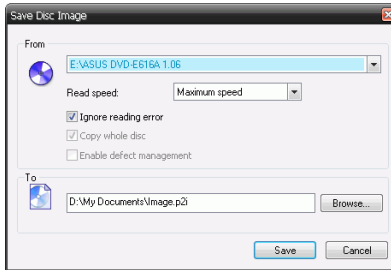
2. Select your source and target drives.
3. Click **Copy**. CyberLink Power2Go burns the copied data onto the disc.
4. When burning is complete, select an option in the dialog box that opens:
  - Click **View Log** to view the burning log. The log opens in your default TXT editor, where you can view and save it.
  - Click **OK** to close the dialog and then exit.

## Saving a Disc Image

Saving a disc image onto your hard drive is useful for backing up your discs onto your hard drive for future burning tasks.

To save a disc image, do this:

1. In the Select a Burning Task window, click **Copy Disc** and then select **Save Disc Image**.



2. Insert your disc. If necessary, select your source drive in the **From** drop-down box.
3. Enter the destination folder and disc image file name in the **To** entry box, or click **Browse...**, select a folder and enter the disc image file name.
4. Click **Save** to save the disc image.
5. When saving is complete, select an option in the dialog box that opens:
  - Click **View Log** to view the log. The log opens in your default TXT editor, where you can view and save it.
  - Click **OK** to close the dialog and then exit.

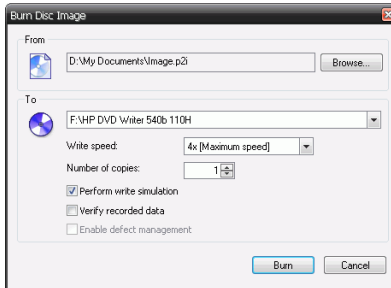
## Burning a Disc Image

A disc image is a duplicate of the content and file structure that is destined to be burned to disc. Using CyberLink Power2Go, you can burn a disc image to a disc. Burning a disc image to disc allows you to restore a saved disc image to disc as well as burn disc images created by the CyberLink Image Recorder.

To burn a disc image, do this:



1. In the Select a Burning Task window, click **Copy Disc** and then select **Burn Disc Image**.



2. Click **Browse...** and locate the disc image.
3. Insert your disc and select your drive in the drop-down list.
4. Click **Burn** to start burning it to disc.
5. When burning is complete, select an option in the dialog box that opens:
  - Click **View Log** to view the burning log. The log opens in your default TXT editor, where you can view and save it.
  - Click **OK** to close the dialog and then exit.

# Burn a Mixed Disc

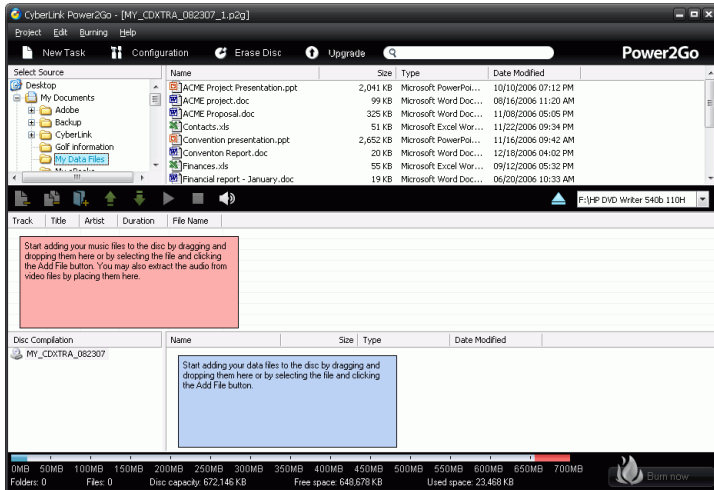
The **Mixed Disc** option allows you to burn mixed content to CD. The different disc formats (CD Extra, Mixed Mode CD and HighMAT CD) allow you to burn different types of media to the same disc. Each of the formats is slightly different, so the different formats are presented separately below.

## CD Extra & Mixed Mode CD

With the **CD Extra** feature you can create an audio CD that also contains your data files. The **Mixed Mode CD** allows you to create a data CD that also contains audio files in the audio CD format. These discs allow you to play the music on your computer with the proper playback software, and also view the data files like a normal data disc.

The procedure to create these discs are very similar, so they will be outlined together. To burn a CD Extra or Mixed Mode CD disc, do this:

1. In the Select a Burning Task window, click the **Mixed Disc** icon and then select **CD Extra** or **Mixed Mode CD**. The CD Extra/Mixed Mode CD window opens.



2. Use the search pane to navigate to the files you want to include on your disc.
  3. If you're creating a **CD Extra** disc:
    - Drag and drop music or video files to the middle pane. (Dragging a folder to the pane adds the files it contains, but does not create a folder on the disc.)
    - Drag and drop data files and folders to the bottom pane. (Dragging a folder to the pane creates a folder on the disc.)
- Note:** If you drag music or video files to the bottom pane, you will be unable to play them on a CD player, as they will be read as data files.
4. If you're creating a **Mixed Mode CD**:
    - Drag and drop data files and folders to the middle pane. (Dragging a folder to the pane creates a folder on the disc.)
    - Drag and drop music or video files to the bottom pane. (Dragging a folder to the pane adds the files it contains, but does not create a folder on the disc.)

**Note:** If you drag music or video files to the middle pane, you will be unable to play them later, as they will be read as data files.

5. When you have added all of the media that you want to burn, click



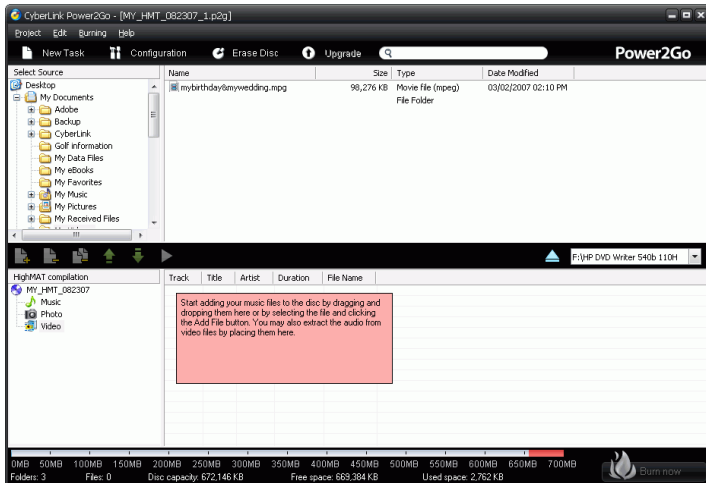
6. If required, adjust the configurations on the **Burner** and other tabs (See "Configuration Options" on page 52 for more information.)
7. Click **Burn** when you are ready to burn your disc. CyberLink Power2Go will proceed to burn your disc.
8. When burning is complete, select an option in the dialog box that opens:
  - Click **View Log** to view the burning log. The log opens in your default TXT editor, where you can view and save it.
  - Click **OK** to close the dialog and then exit.


## HighMAT CD

The HighMAT CD option allows you to burn a specially formatted data disc with movie, image and music files that can be played on your computer or on a HighMAT player. Since the files are copied onto the disc instead of encoded, this format offers the advantage of retaining the original file quality.

To burn a HighMAT disc, do this:

1. In the Select a Burning Task window, click the **Mixed Disc** icon and then select **HighMAT CD**. The HighMAT window opens.



2. Highlight the files or folders you want to burn, then drag to the destination disc or click the add file button.
  - Click the **Music**, **Photo**, and **Video** icons to display the files that have been added under each category.
3. When you have added all of the media that you want to burn, click .
4. If required, adjust the configurations on the **HighMAT CD** and **Burner** tabs (See "Configuration Options" on page 52 for more information.)
5. Click **Burn** when you are ready to burn your disc. CyberLink Power2Go will proceed to burn your disc.
6. When burning is complete, select an option in the dialog box that opens:
  - Click **View Log** to view the burning log. The log opens in your default TXT editor, where you can view and save it.
7. Click **OK** to close the dialog and then exit

# Disc Utilities

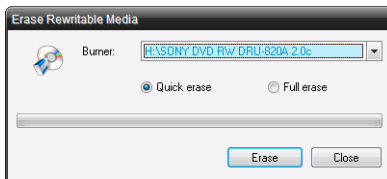
In addition to simple disc burning functions, CyberLink Power2Go offers a few handy utilities for managing your discs, including erasing rewritable discs, ripping audio from music CDs and converting audio files to other formats.

## Erasing a Disc

If you are using a rewritable disc, you can erase content that has been previously recorded onto it. This allows you to reuse the same discs over and over without the need to continually buy new discs.

To erase a disc, do this:

1. Start CyberLink Power2Go.
2. In the Select a Burning Task window, click **Disc Utilities**, then select **Erase Disc**.



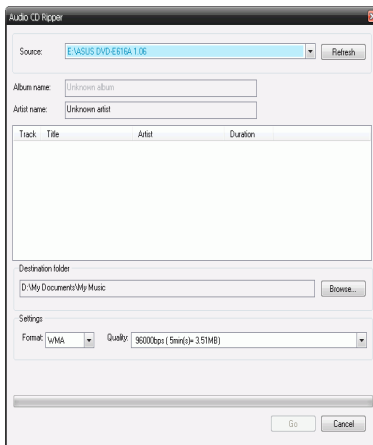
3. Insert your disc and select your burner.
4. Select an erasing method.
  - The **Quick erase** option erases the disc index contained on the disc.
  - The **Full erase** option erases all of the content the disc contains.
5. Click **Erase** to start. CyberLink Power2Go will erase specified disc.

# Ripping Audio

The **Rip Audio** function copies audio tracks from an audio CD to your hard drive in MP3, WAV or WMA format. You can also copy audio tracks on a CD-Extra CD and a Mixed Mode CD.

To rip audio files to your hard drive, do this:

1. Start CyberLink Power2Go.
2. In the Select a Burning Task window, click **Disc Utilities**, then select **Rip Audio**.



3. Insert your disc and select your drive.
  - If you change discs or select a different drive, click **Refresh** to ensure that the most updated information is displayed.
4. Select the audio track(s) you want to rip to your hard drive.

**Note:** In your version of CyberLink Power2Go, this feature may be limited or unavailable.

5. Locate the folder where you want to rip the audio tracks to.

**Note:** You can select a different audio format or quality, if desired.

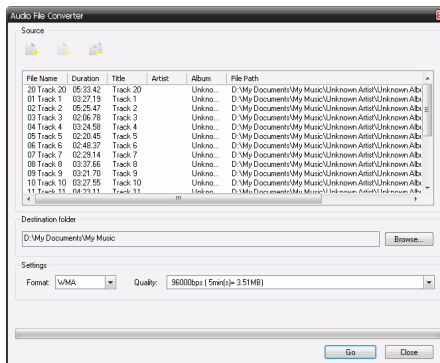
- Click **Go** to begin ripping files. CyberLink Power2Go will rip the files to the specified folder.


## Converting Audio Files

Use the **Audio Converter** utility to convert audio files to different audio formats (to and from the MP3, WAV, and WMA formats). You can convert audio files to different qualities and also record audio from video clips.

To convert an audio or video file, do this:

- In the Select a Burning Task window, click **Disc Utilities**, then select **Audio Converter**. The Audio File Converter window opens.



- Click  and then select the file(s) you want to convert. Click **Import** to open the files.
- Click **Browse...**, then select a destination folder.
- Specify the format you want to convert the files to, and, if necessary, select a quality from the drop-down box.
- Click **Go** to begin. CyberLink Power2Go will convert the files to the specified format.



# **Additional Burning Notes & Features**

The following are some additional burning notes and features provided by CyberLink Power2Go that you may find extremely useful when burning discs.

## **Multisession Discs**

When you burn a data disc in CyberLink Power2Go, you can create a multisession disc that lets you burn additional content to a disc that is not full. CyberLink Power2Go creates a multisession disc whenever you burn a CD, DVD or Blu-ray Disc and choose not to close the disc.

With multisession discs you can continue to add content to a multisession disc until the disc is full or closed, at which point you can no longer add any further data.

## **Support Multiple Instances**

CyberLink Power2Go allows you to burn up to three separate discs on different burning devices at the same time.



## Chapter 3:

# Configuration

This chapter also outlines the steps for configuring CyberLink Power2Go Preferences and using the Configuration windows.

This chapter contains the following sections:

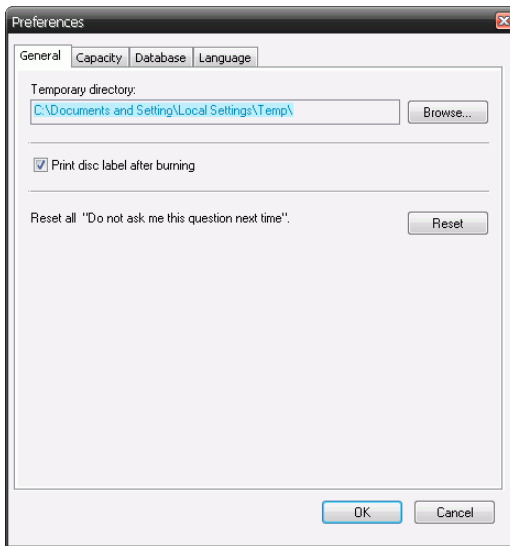
- "Power2Go Preferences" on page 48
- "Configuration Options" on page 52

# Power2Go Preferences

CyberLink Power2Go offers several different types of preferences to suit the program to your working methods. To view the program's preferences, click **Project > Preferences**.

## General

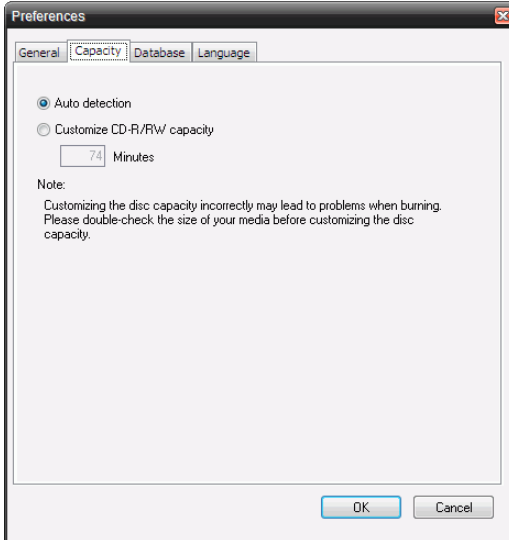
Click the **General** tab to display the General preferences.



- **Temporary directory:** allows you to set a working directory where CyberLink Power2Go saves temporary files while burning.
- **Reset all “Do not ask me this question next time”:** allows you to reset the preference setting for the reminder dialogs. Click **Reset** to reset the reminders.

## Capacity

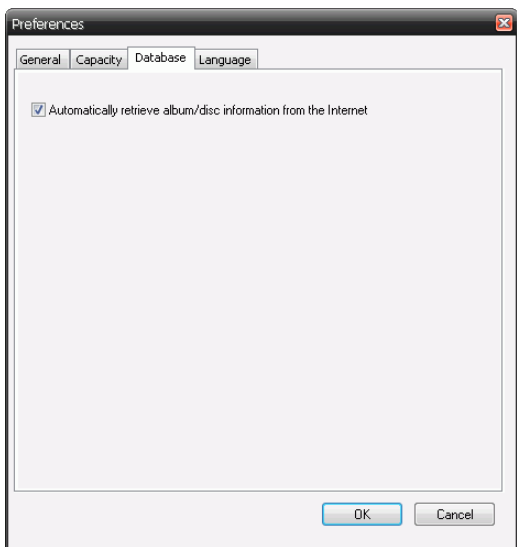
Click the Capacity tab to display the **Capacity** preferences.



- The **Capacity** tab allows you to set a custom disc size if the CD you are using can hold more than 700MB.
  - Select **Auto detection** to enable CyberLink Power2Go to automatically detect a disc's capacity.
  - Check **Customize CD-R/RW capacity** and then enter the new size in the **Minutes** entry box to manually enter a disc's capacity.

## Database

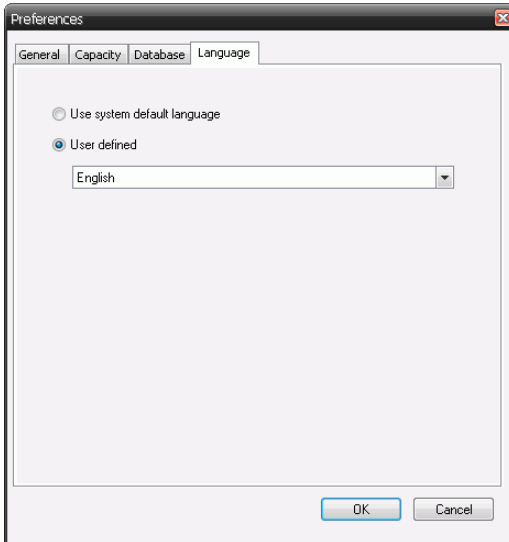
Click the **Database** tab to display the Internet connection preferences.



- **Automatically retrieve album/disc information from the Internet:** select this option to have CyberLink Power2Go automatically retrieve song and album information when ripping audio files.


## Language

Click the Language tab to display the **Language** preferences.



- **Use system default language:** Select this option for the CyberLink Power2Go language display to be the same as the default language of your operating system.
- **User defined:** Select this option and then select the language from the drop-down list that you want CyberLink Power2Go to use.

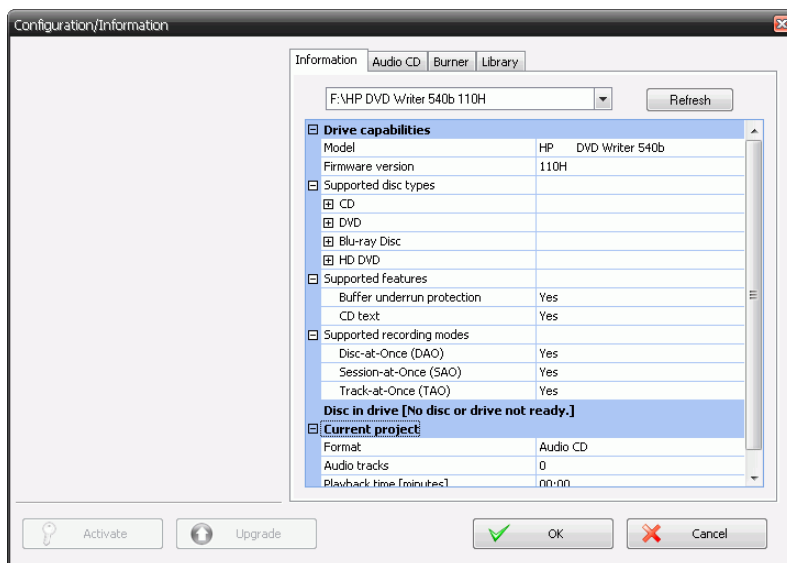
# Configuration Options

To open the Configuration/Information window, click  **Configuration** in the main program window. The Configuration/Information window opens, displaying tabs that contain configuration information related to your current burning task.

**Note:** Only the Information tab is displayed if you have not selected a burning task. The tabs that are displayed and the available options they contain depend on the burning task you have selected.

## Information Tab

The **Information** tab displays information about the selected disc drive, the disc in the drive, as well as the current project. Click the + box next to an item to view more detailed information.

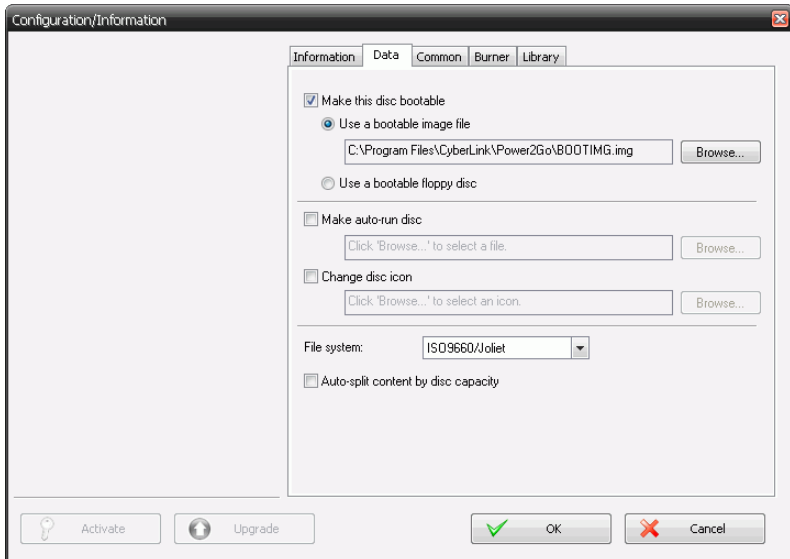




- If you change discs or select a different drive, click **Refresh** to ensure that the most updated information is displayed.

## Data Tab

The **Data** tab displays options for making a Data, CD Extra or Mixed Mode CD.

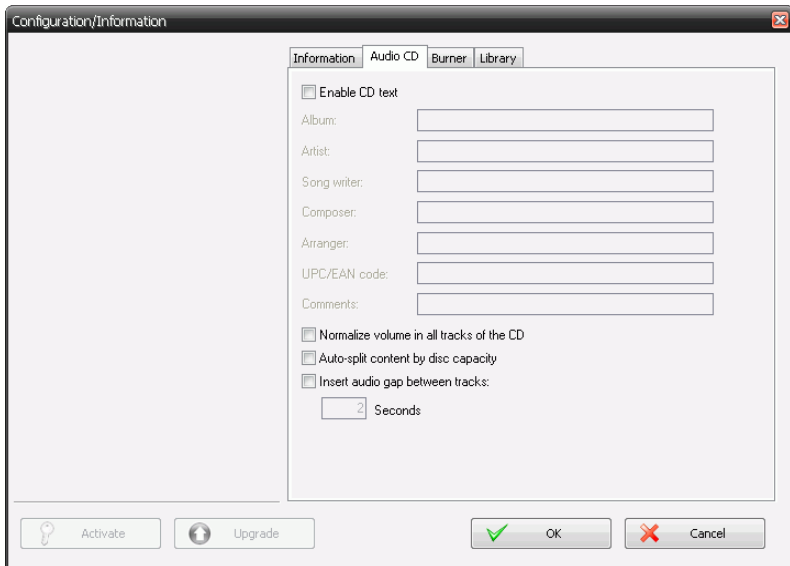


- **Make this disc bootable:** You can create a bootable CD, DVD, Blu-ray, which you can use to boot your computer from your disc drive if your operating system ever fails. See "Burning a Bootable Data Disc" on page 21 for more information.
- **Make auto-run disc:** When this option is enabled, a computer runs the selected auto-run file when the disc is inserted. Click **Browse...**, then locate the auto-run file you want to use. When this option is disabled, the computer takes no action when the disc is inserted.
- **Change disc icon:** You can change the icon that appears when this disc is viewed in Windows Explorer. Click **Browse...**, then locate the icon (.ICO) file you want to use.

- **File system:** Set the File system (ISO9660/Joliet, UDF 1.5, UDF 2.0, or UDF 2.5) of the disc you are burning.
- **Auto-split content by disc capacity:** automatically divides the files to be burned into volumes (portions) according to the size of the destination disc.

## Audio CD Tab

The **Audio CD** tab displays options for making an audio CD music disc, or CD Extra or Mixed Mode CD.

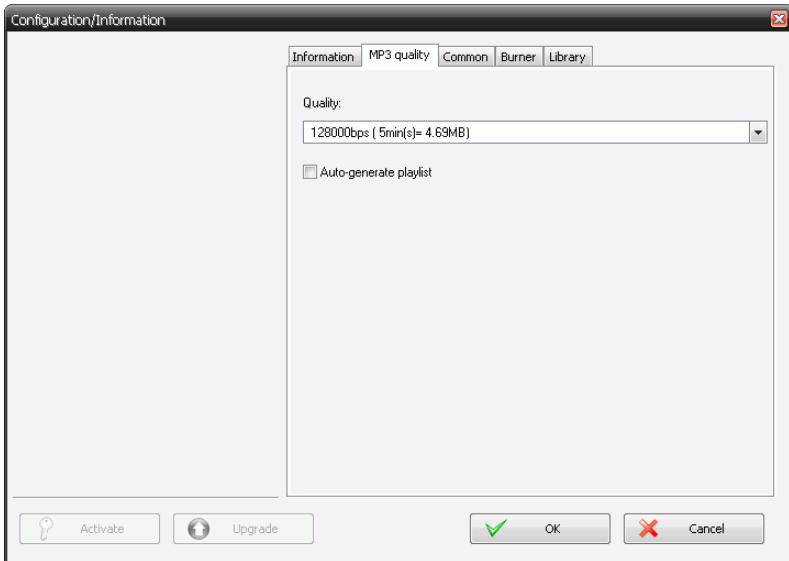


- **Enable CD text:** allows you to manually add information (album or artist name) to audio tracks. Enter the desired information in the entry boxes provided.
- **Normalize volume in all tracks of the CD:** adjusts the volume of all of the audio tracks on the CD to the same level.
- **Auto-split content by disc capacity:** automatically divides the files to be burned into volumes (portions) according to the size of the destination disc.

- **Insert audio gap between tracks:** allows you to add silence between tracks. Enter the desired duration in the **Seconds** box.

## MP3 Quality Tab

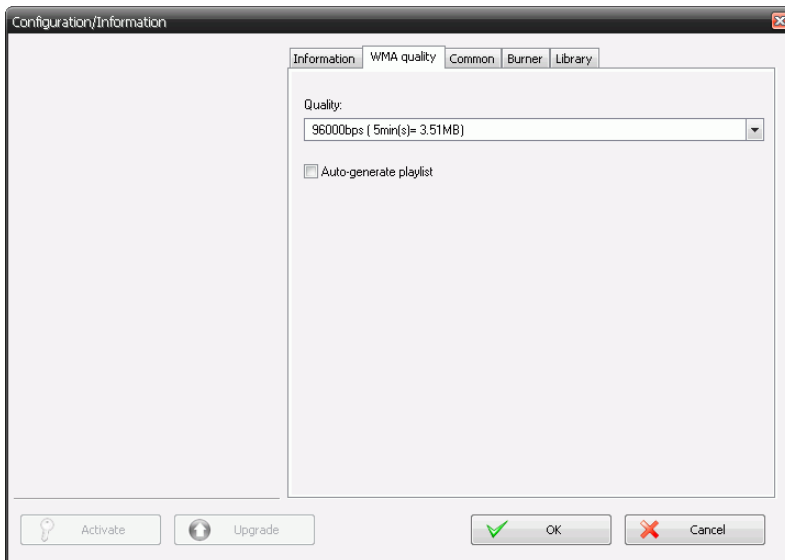
The **MP3 Quality** tab displays options for making an MP3 music disc.



- **Quality:** Select a quality from the drop-down box.
- **Auto-generate playlist:** creates a playlist based on the songs you have added to your disc.

## WMA Quality Tab

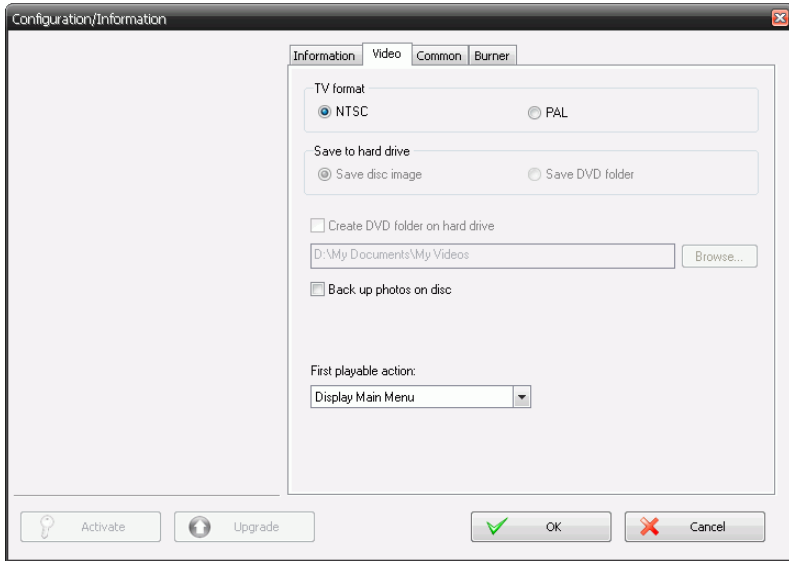
The **WMA Quality** tab displays options for making a WMA music disc.



- **Quality:** Select a quality from the drop-down box.
- **Auto-generate playlist:** creates a playlist based on the songs you have added to your disc.

## Video Tab (for VCD)

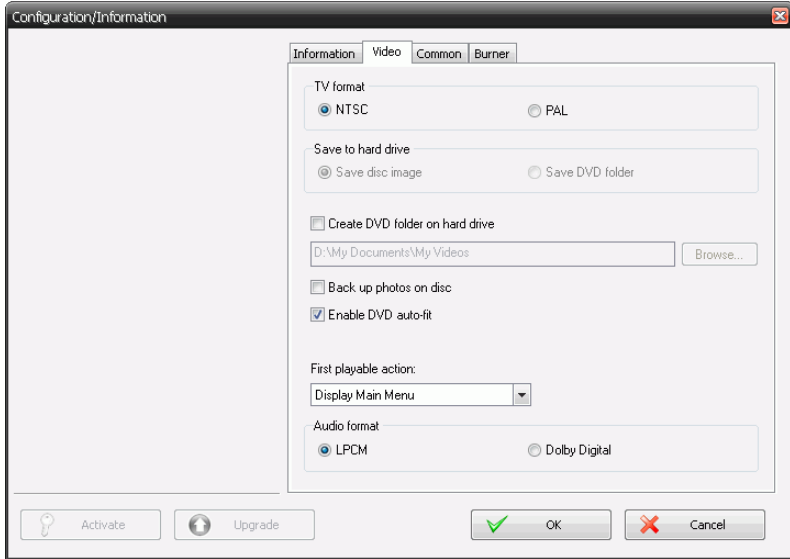
The **Video** tab displays options for making a VCD or video DVD. The options described below pertain to VCDs only.



- **TV format:** Set the TV format (NTSC or PAL) of the video you are burning to disc.
- **Back up photos on disc:** Make backup copies of your original photos whose resolution is higher than that of your final movie production.
- **First playable action:** Set the first action the VCD Player will take when you insert this disc into the VCD Player.

## Video Tab (for DVD)

The **Video** tab displays options for making a VCD or video DVD. The options described below pertain to DVDs only.



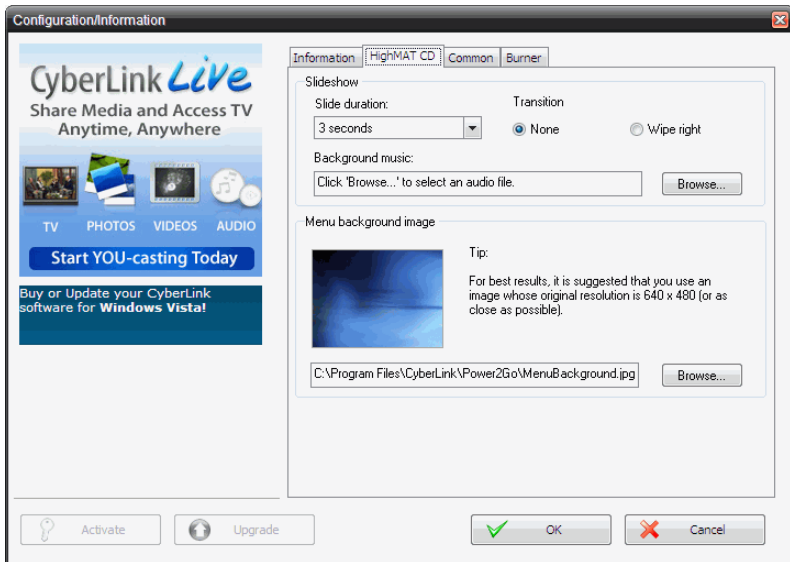
- **TV format:** Set the TV format (NTSC or PAL) of the video you are burning to disc.
- **Save to hard drive:** Check an option to burn both a disc image and a DVD folder, or only a DVD folder, to your hard drive.
- If you check the **Create DVD folder on hard drive** option, click **Browse...** to locate the folder you want to use.
- **Back up photos on disc:** Make backup copies of your original photos whose resolution is higher than that of your final movie production.
- **Enable DVD auto-fit:** Check this option to automatically fit the video onto one disc with the best quality.
- **First playable action:** Set the first action the DVD Player will take when you insert this disc into the DVD Player.

- **Audio format:** Select **LPCM** (an uncompressed audio format) or **Dolby Digital** (uses the Dolby Digital Consumer Encoder format).

**Note:** In your version of CyberLink Power2Go, this feature may be limited or unavailable.

## HighMAT CD Tab

The **HighMAT CD** tab displays options for making a HighMAT disc.



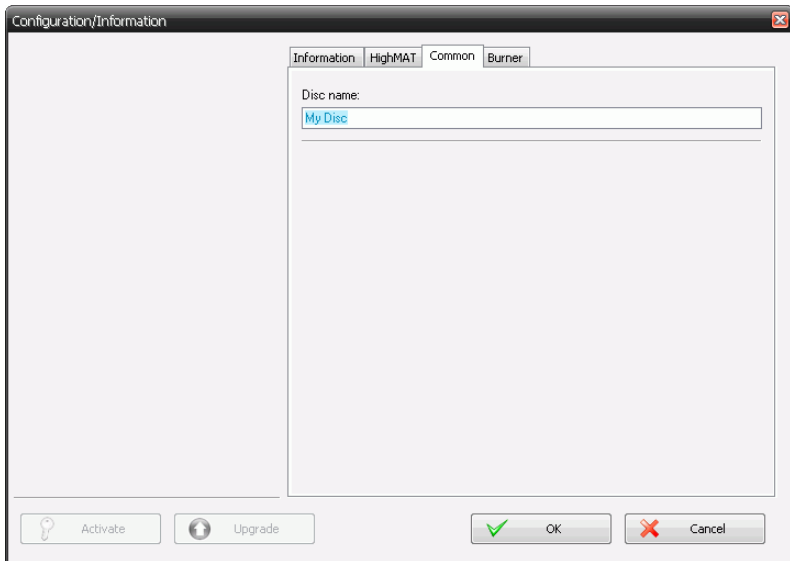
- **Slide Duration:** Select a duration from the drop-down box. To control a slideshow manually, select **Manual**.
- **Transition:** Select the transition type (**None** or **Wipe right**) you want to use in your slideshow.
- **Background Music:** To set background music on your disc's menu page, click **Browse...**, then locate the music file you want to use.

- **Menu Background Image:** To set a background image on your disc's menu page, click **Browse...**, then locate the image file you want to use.

**Note:** For best results, it is suggested that you use an image whose original resolution is 640 x 480 (or as close as possible).

## Common Tab

The **Common** tab displays options available when burning different kinds of discs.

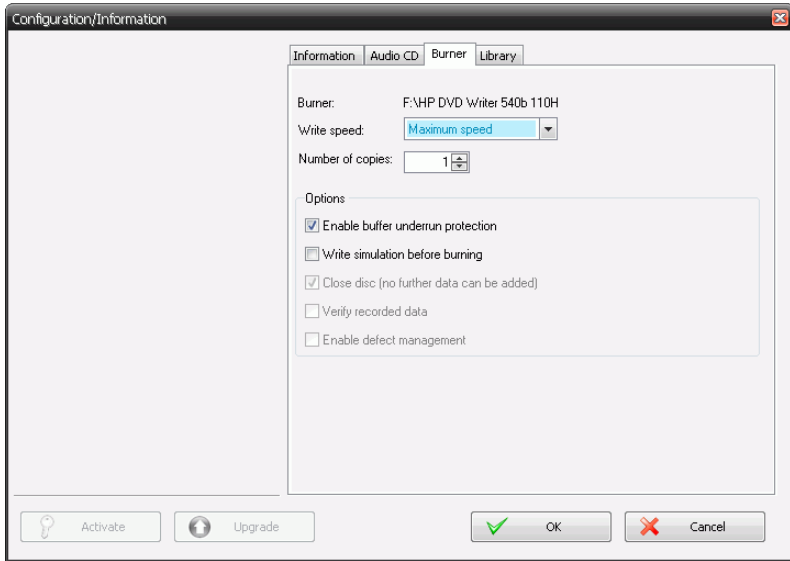


- **Disc name:** Enter a name for the disc. The disc name appears on a disc player when the disc is played.
- **Use the original date and time:** This option uses the original date and time of the files that will be burned to the disc.
- **Use the current date and time:** This option uses the current date and time on your computer.
- **Use this date and time:** This option lets you enter a specific date and time in the fields provided.



## Burner Tab

The **Burner** tab displays information about your disc burner and options for controlling its function.



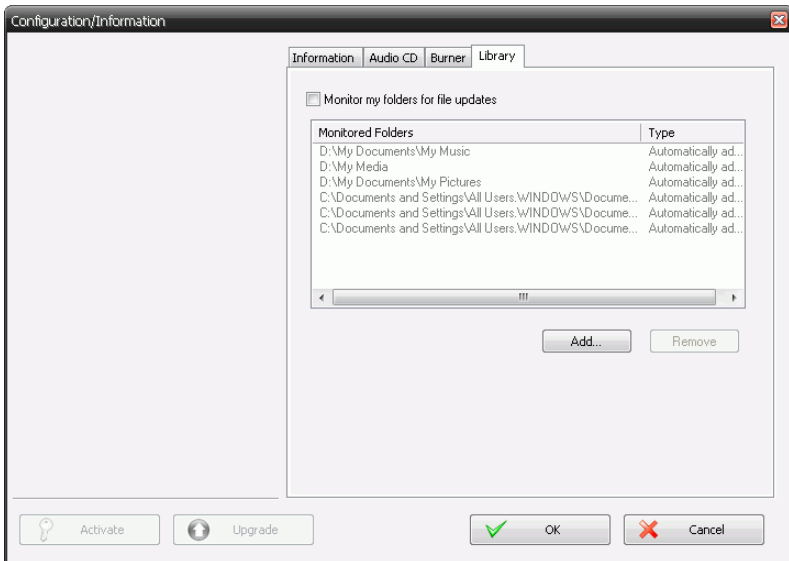
- **Burner:** Displays the selected disc burner.
- **Write speed:** Select a write speed from the drop-down list.
- **Number of copies:** Enter the number of copies of the disc you want to burn.
- **Enable buffer underrun protection:** Enabling this option ensures that data is written to disc without interruption. (An interruption in data can result in an unusable disc.)
- **Write simulation before burning:** Perform a write simulation to verify that your burner can burn to the disc at the selected speed without error.

**Note:** If you have enabled buffer underrun protection or have previously burned discs using the current configuration, you do not need to run a simulation.

- **Close disc:** Checking this option write-protects the disc. No further data can be appended to the disc after the current burning session. By not checking it, you can create a multisession disc, see "Multisession Discs" on page 45 for more information.
- **Verify recorded data:** Check this option to compare recorded data to the source data to ensure accurate burning.
- **Enable defect management:** Check this option to enable CyberLink Power2Go to detect and manage any defects on the disc.

## Library Tab

The **Library** tab lets you enable the monitoring of your music and data files on your computer. Selecting this feature enables the CyberLink Media Library service, allowing you to easily search for and select files when creating data or music discs.



- **Monitor my folders for file updates:** Selecting this option will enable CyberLink Power2Go to monitor any specified folders for updates to existing files or the addition of new files. Click the

**Add...** button to select additional folders you want to be monitored.



## Chapter 4:

# Technical Support

This chapter contains technical support information. It includes all the information to find the answers you need to assist you. You may also find answers quickly by contacting your local distributor/dealer.

This chapter contains the following sections:

- "Before Contacting Technical Support" on page 66
- "Web Support" on page 67

# Before Contacting Technical Support

Please take advantage of one of CyberLink's free technical support options:

- consult the User Guide or the online help installed with your program.
- refer to the Frequently Asked Questions (FAQs) in the Support section of the CyberLink Web site.

[http://www.cyberlink.com/multi/support/product\\_faq\\_home.jsp](http://www.cyberlink.com/multi/support/product_faq_home.jsp)

The FAQs may have information and helpful hints that are more current than the User Guide and online help.

When contacting technical support by email or phone, please have the following information ready:

- registered **Activation Key** (Your Activation Key can be found on the CD cover, the Box cover, or in the email received after you purchased CyberLink products on the Cyberlink store.)
- the product name, version and build number, which generally can be found by clicking on the product name image on the user interface
- the version of Windows installed on your system
- hardware devices on your system (capture card, sound card, VGA card) and their specifications
- the wording of any warning messages that were displayed (You may want to write this down or take a screen capture)
- a detailed description of the problem and under what circumstances it occurred

# Web Support

Solutions to your problems are available 24 hours a day at no cost on the CyberLink web sites:

**Note:** You must first register as a member before using CyberLink web support.

CyberLink provides a wide range of web support options, including FAQs and a user community forum, in the following languages:

Language	Web Support URL
<b>English</b>	<a href="http://www.cyberlink.com/CS/support/enu/support_index.jsp">http://www.cyberlink.com/CS/support/enu/support_index.jsp</a>
<b>Traditional Chinese</b>	<a href="http://tw.cyberlink.com/CS/support/cht/support_index.jsp">http://tw.cyberlink.com/CS/support/cht/support_index.jsp</a>
<b>Japanese</b>	<a href="http://jp.cyberlink.com/jpn/support_jpn/support_index.jsp">http://jp.cyberlink.com/jpn/support_jpn/support_index.jsp</a>
<b>Italian</b>	<a href="http://it.cyberlink.com/CS/support/ita/support_index.jsp">http://it.cyberlink.com/CS/support/ita/support_index.jsp</a>
<b>German</b>	<a href="http://de.cyberlink.com/CS/support/deu/support_index.jsp">http://de.cyberlink.com/CS/support/deu/support_index.jsp</a>
<b>French</b>	<a href="http://fr.cyberlink.com/CS/support/fra/support_index.jsp">http://fr.cyberlink.com/CS/support/fra/support_index.jsp</a>
<b>Spanish</b>	<a href="http://es.cyberlink.com/CS/support/esp/support_index.jsp">http://es.cyberlink.com/CS/support/esp/support_index.jsp</a>





# Index

## A

- About Power2Go 15
- Album, song information 50
- Always on Top 15
- Audio CD tab 54
- Audio CD, burning 26
- Audio Converter 44
- audio gap 55
- audio tracks, ripping to hard disk 43
- Auto detection 49
- Auto-generate playlist 55, 56
- auto-run option 53
- Auto-split content by capacity 54

## B

- backing up photos on disc 57, 58
- before burning
  - writing a simulation 61
- bootable
  - CD, burning 21
  - CD, options 53
  - floppy disc 21
  - image file 21
- buffer underrun protection 61

- Burn 20
- Burn DVD Folder 32
- Burning
  - burning with Power2Go Sidebar Gadget 11

- burning
  - Audio CD 26
  - bootable data disc 21
  - CD Extra 38
  - data discs 20
  - disc images 36
  - HighMAT CD 40
  - in Power2Go Express Mode 10
  - mixed disc 4, 38
  - mixed discs 38
  - Mixed Mode CD 40
  - movie disc 29
  - MP3 disc 26
  - multisession discs 45
  - music disc 26
  - secured data discs 22
  - simulation 61
  - WMA disc 26
- buttons 18

## C

- Capacity preferences 49
- CD
  - bootable 53
  - closing 62
  - multisession 45
  - ripping music from 43
  - verifying after burning 62
  - write-protecting 62
- CD Capacity 49

- CD Extra, burning 38
- CD text 54
- change disc icon 53
- Change Skin 15
- Chapter menu 32
- close disc 62
- Copy Disc
  - Power2Go Express icon 13
  - Power2Go mode icon 4
  - Power2Go Sidebar Gadget 11
  - procedure 34
- Custom CD-R/RW capacity 49

## D

- Data Disc
  - burning in Power2Go Express mode 13
  - burning in Power2Go mode 20, 22
  - configuration options 53
  - Power2Go Express icon 13
  - Power2Go mode icon 4
  - Power2Go Sidebar Gadget 10
- date and time options 60
- disc
  - copying 34
  - name 60
- disc image
  - burning 36
  - saving 35
- disc menu
  - add background music 32
- disc types
  - supported 6
- disc utilities

- Burn Disc Image 36
- Erase Disc 42
- Rip Audio 43
- Save Disc Image 35
- DVD Auto-fit 58

## E

- enable buffer underrun protection 61
- Enable defect management 62
- Erase Disc
  - procedure 42

## F

- features in Power2Go 2
- File system 54
- First Playable Action 57
- First playable action 58
- floppy disc, bootable 21
- full erase 42

## G

- General preferences 48

## H

- Hide 15
- HighMAT 40

HighMAT CD, burning 40

## I

images

supported formats 6

Internet preferences 50

## L

Language preferences 51

## M

Make a disc bootable 53

Media library server 20

Media library service 27, 62

Media tab 27

minimum system requirements 7

mixed disc, burning 38

Mixed Mode CD 38

Mixed Mode CD, burning 40

modes

Power2Go 17

Power2Go Express 13

Movie Disc

burning 29

Power2Go Express mode 13

Power2Go Sidebar Gadget 11

MP3 CD, burning 26

MP3 Quality tab 55

Multiple instances 45

Multisession disc 45, 62

music

ripping to hard drive 43

supported formats 6

Music Disc

Audio CD, burning in Power2Go  
mode 26

MP3, burning in Power2Go mode  
26

Power2Go mode icon 4

Power2Go Sidebar Gadget 10

WMA, burning in Power2Go  
mode 26

## N

Normalize volume 54

number of copies 61

## P

photos

backing up on disc 57, 58

Power2Go buttons 18

Power2Go Express 13

burning data discs 13

burning movie discs 29

Copy Disc icon 13

Data Disc icon 13

Movie Disc icon 13

Power2Go mode 17

burning Audio CD discs 26

burning bootable data discs 21

burning data discs 20, 22

- burning MP3 discs 26
- burning music discs 26
- burning WMA discs 26
- copying discs 34
- Power2Go Sidebar Gadget
  - adding 11
  - burning 11
  - Copy Disc icon 11
  - Data Disc icon 10
  - Movie Disc icon 11
  - Music Disc icon 10
- Power2Go Sidebar Gadgets 10
- preferences
  - Capacity 49
  - General 48

## Q

- quick erase 42

## R

- Rec button 14
- Recent Data tab 20
- Recently created documents 20
- Recently opened documents 20
- Retrieve song, album information 50
- Rip Audio
  - procedure 43

## S

- Search
  - album 27
  - artist 27
  - genre 27
  - recently added 27
  - year 27
- security browser 24
- Show 15
- simulation, writing 61
- skins, changing 15
- slideshow
  - add background music 31
  - create 31
- Slideshow Editor 31
- Song, album information 50
- Start Program When System Starts 15
- Support 65
- Support multiple instances 45
- system requirements 7

## T

- Technical support 65
- Temporary directory 48
- Title menu 32
- To 26

## U

- UI buttons 18

## V

verify recorded data option 62

video

supported formats 6

Video Disc

Power2Go mode icon 4

View Log 21, 22, 23, 28, 32, 33, 36, 37,  
40, 41

## W

WMA CD, burning 26

WMA Quality tab 56

write

simulation 61

speed 61

write-protect a CD 62

