

CyberLink

# Power2Go 5

User's Guide

## Copyright and Disclaimer

All rights reserved. No part of this publication may be reproduced, stored in a retrieval system, or transmitted in any form or by any means electronic, mechanical, photocopying, recording, or otherwise without the prior written permission of CyberLink Corporation.

To the extent allowed by law, Power2Go IS PROVIDED "AS IS", WITHOUT WARRANTY OF ANY KIND, EITHER EXPRESS OR IMPLIED, INCLUDING WITHOUT LIMITATION ANY WARRANTY FOR INFORMATION, SERVICES, OR PRODUCTS PROVIDED THROUGH OR IN CONNECTION WITH POWER2GO AND ANY IMPLIED WARRANTIES OF MERCHANTABILITY, FITNESS FOR A PARTICULAR PURPOSE, EXPECTATION OF PRIVACY, OR NON-INFRINGEMENT.

BY USING THIS SOFTWARE, YOU AGREE THAT CYBERLINK WILL NOT BE LIABLE FOR ANY DIRECT, INDIRECT, OR CONSEQUENTIAL LOSS ARISING FROM THE USE OF THIS SOFTWARE OR MATERIALS CONTAINED EITHER IN THIS PACKAGE.

The terms and conditions here under shall be governed and construed in accordance with the laws of Taiwan.

Power2Go is a registered trademark along with other company and product names mentioned in this publication, used for identification purposes and remain the exclusive property of their respective owners.

## International Headquarters

<b>Mailing Address</b>	CyberLink Corporation 15F, #100, Min Chuan Road, Hsin Tian City Taipei County, Taiwan
<b>Web Site</b>	<a href="http://www.cyberlink.com">www.cyberlink.com</a>
<b>Telephone</b>	886-2-8667-1298
<b>Fax</b>	886-2-8667-1300

Copyright © 2005 CyberLink Corporation. All rights reserved.

# Contents



<b>1</b>	<b>Introduction.....</b>	<b>1</b>
	Welcome .....	2
	The Power2Go Program .....	3
	Power2Go Express Mode .....	3
	Power2Go Mode .....	6
	Disc Capacity Bar .....	10
	Register Your Software .....	11
	CD-Key Activation .....	12
	Latest Features .....	13
	Supported File & Disc Types .....	14
	System Requirements .....	14



<b>2</b>	<b>Burning.....</b>	<b>17</b>
	Before Burning a Disc .....	18
	Preferences .....	18
	Configuration Options .....	20
	Burning Discs .....	30
	Multisession Discs .....	30
	Burn a Data Disc .....	31
	Burn a Music Disc .....	35
	Burn a Video/Photo Disc .....	39
	Burn a Mixed Disc .....	45
	Copying Discs .....	51



<b>Disc Utilities .....</b>	<b>53</b>
Burning a Disc Image .....	54
Saving a Disc Image .....	55
Erasing a Disc .....	56
Ripping Audio .....	57
Converting Audio Files .....	59
<b>Appendix .....</b>	<b>61</b>
Technical Support .....	62
Web Support .....	62
Fax Support .....	62
Telephone Support .....	63
Disc Types .....	64
CD Types .....	65
DVD Types .....	66
Blu-ray Discs .....	68
<b>Index .....</b>	<b>69</b>

## Chapter 1:

# Introduction

This chapter introduces the CyberLink Power2Go program, starting with a description of the program's functions, followed by an explanation of Power2Go's two burning modes, Power2Go mode and Power2Go Express mode. The chapter ends with a list of recommended system minimum requirements.

This chapter contains the following sections:

- Welcome on p.2
- The Power2Go Program on p.3
- Register Your Software on p.11
- Latest Features on p.13
- Supported File & Disc Types on p.14
- System Requirements on p.14

# Welcome

Welcome to the CyberLink family of digital video tools! CyberLink Power2Go is a disc-burning program, which is a handy utility for burning discs containing movies made using CyberLink's movie-making software, or when you want to make music discs, data discs, and even bootable discs.

Power2Go's main features include the following:

- burns data, music, movie, and mixed media discs
- converts audio files to and from the MP3, WAV, and WMA formats as well as different qualities
- erases discs that contain unwanted content
- copies entire discs
- creates slideshows from individual photo files
- Power2Go Express mode supports drag-and-drop to desktop icons for burning in the fewest number of steps
- burns DVD folders to disc
- supports CD text for additional textual information (such as a description of the artist or song) with audio tracks

# The Power2Go Program

The CyberLink Power2Go program can run in either of two modes: Power2Go Express mode or Power2Go mode. Power2Go Express mode is the simpler of the two modes, allowing you to burn discs in two steps. Power2Go mode, on the other hand, offers you access to more options and disc utilities.

## Power2Go Express Mode

Power2Go Express mode uses the following icons, placed on your desktop:



Drag data files to this icon to burn a data disc. (See Burn a Data Disc in Power2Go Express Mode on p.31.)

---



Drag music files to this icon to burn an Audio CD music disc. (See Burn an Audio CD Music Disc in Power2Go Express Mode on p.35.)

---



Drag video files to this icon to burn a movie disc. (See Burn a Video/Photo Disc in Power2Go Express Mode on p.39.)

---



Double-click this icon to copy a disc. (See Copying Discs on p.51.)

**Note:** You can click and drag the entire column of icons to a different location on your desktop, or right-click on a single icon to move it individually.

## Burning in Power2Go Express Mode

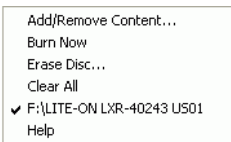
Dragging files in appropriate formats to these icons prepares Power2Go to burn a disc. You can double-click the icon to open a window for further modification of your burning configuration.

- To burn a data disc, see Burn a Data Disc in Power2Go Express Mode on p.31.
- To burn an Audio CD music disc, see Burn an Audio CD Music Disc in Power2Go Express Mode on p.35.
- To burn a movie disc, see Burn a Video/Photo Disc in Power2Go Express Mode on p.39.
- To copy a disc, see Copying Discs on p.51.

If you do not need to add any more files or modify your burning configuration, click the **Rec** button after dragging files onto the icon. Burning begins immediately, and the process is displayed on the icon. (Click **Stop** to cancel the burning process.)



Right-clicking an icon on the desktop opens a command menu to control burning tasks.

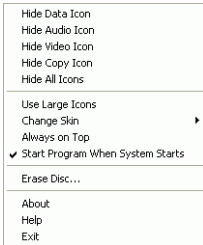


Click a menu item to perform the corresponding task.



## Configuring Power2Go Express Mode

Right-clicking the icon on the system tray opens a command menu to control Power2Go Express mode icons, to erase a disc, and to control the Power2Go program.



Use one of the **Hide** options to remove an icon from display on the desktop. (The option then becomes **Show**, allowing you to display the icon again.) You can also choose to display large or normal-sized icons on the desktop.

Check the **Always on Top** option to keep Power2Go on top of any other programs you are running.

Check the **Start Program When System Starts** option to run Power2Go whenever you power on your computer.

Click **Erase Disc...** to erase a rewritable disc.

Click **About** to display Power2Go version information, click **Help** to open the help file, and click **Exit** to close Power2Go Express mode.

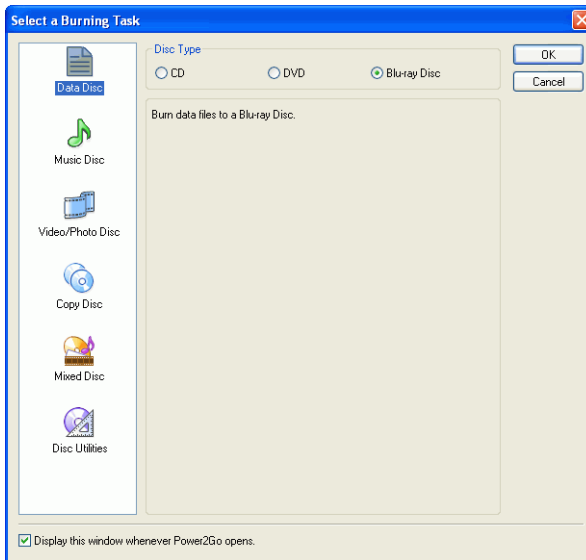
## Changing Power2Go Express Mode Skins

Power2Go Express Mode provides several different skins that allow you to change the look of the desktop icons. To use a different skin, right-click the icon on the system tray to open the command menu, click the **Change Skin...** option, then select a skin. If you would like to use a custom skin, click the **Browse...** option. In the dialog box that opens, open the skin file you want to use. The Power2Go Express icons change to the skin you have selected.

## Power2Go Mode


















Power2Go mode opens in a program interface. By default, the Select a Burning Task window opens each time you run the program in Power2Go mode. Power2Go mode also displays a program window with a column of buttons that allow you to perform each of Power2Go's different tasks.

To begin a burning task in the Select a Burning Task window, click an icon, then click **OK** to begin your task.

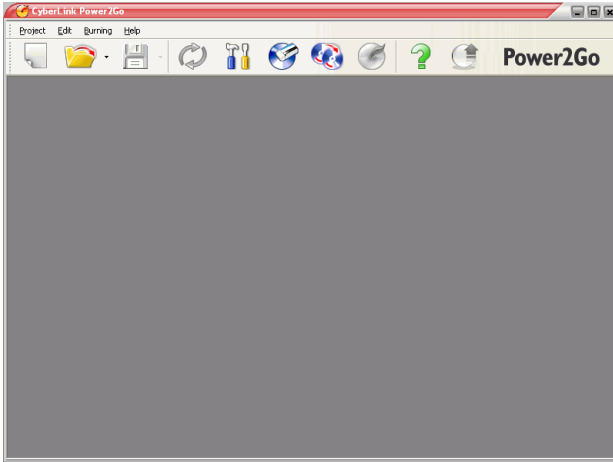


You can disable the Select a Burning Task window by unchecking the **Display this window whenever Power2Go opens** option.

The icons available in the Select a Burning Task window are described below:

	Burns data files to disc.
	Burns audio files to disc.
	Burns video files to disc.
	Copies disc content onto a blank disc.
	Burns mixed media content to disc.
 > 	Burns a disc image to disc. (See Burning a Disc Image on p.54.)
 > 	Saves a disc image to your hard drive for future burning. (See Saving a Disc Image on p.55.)
 > 	Erases a rewritable disc. (See Erasing a Disc on p.56.)
 > 	Rips audio tracks from an Audio CD to your hard drive. (See Ripping Audio on p.57.)
 > 	Converts an audio file to a different audio format. (You can convert to and from the MP3, WAV, and WMA formats.) Also converts audio files to a different quality. (See Converting Audio Files on p.59.)
 > 	Opens the LabelPrint program. For detailed help related to this topic, see the LabelPrint help. (LabelPrint is an optional feature for Power2Go. In your version of Power2Go, this feature may be limited or unavailable.)

When you close (or disable) the Select a Burning Task window, the Power2Go program displays a row of buttons at the top, which allow you to access certain important functions.



The available buttons are described below:



Starts a new burning task.

---



Opens an existing project.

---



Saves an existing project. Click the down-arrow to save a project under a different name.

---



Refreshes the displayed disc/drive information.

---



Displays disc, drive, and project configuration information.

---



Erases a disc.

---



Copies a disc.

---



Burns a disc.

---



Opens the help file.

---



Upgrade the program over the Internet.

---



Displays Power2Go version information.

## Disc Capacity Bar

At the bottom of the program window is the disc capacity bar, which displays a graph of the current and maximum capacity of the disc. (The capacity bar appears after you have selected a burning task.) Below the graph is detailed information about the disc, such as the number of folders and files in the current project and on the disc, as well as the disc's free and used space. Use this bar to keep track of the amount of content you add to the disc.



The capacity bar may display a certain amount of used space even before you add files to be burned to your disc. This is because more data gets burned to the disc than just the files you select. This extra data includes the disc's file system, data specific to the file format you choose, as well as fixed spaces that must be retained between files, sessions, and audio tracks. The real used space is displayed on the capacity bar to give you an accurate indication of how much data can be burned to a disc, instead of relying on trial and error when filling a disc to capacity.

# Register Your Software

After you install the program, a registration window opens, prompting you to register your product. It is important to register your software in order to receive technical support or other information from CyberLink.

**CyberLink Power2Go™ 5**

Thank you for choosing CyberLink software.  
Register today to receive technical support  
and useful information that will maximize  
your enjoyment of digital media on the PC.

First Name:

Last Name:

Email:

Re-Enter Email:

Yes, I would like to receive a newsletter from CyberLink.

Yes, I would like to receive product information from parties other than CyberLink.

[Please read our Privacy Policy](#)

**CyberLink**

Register Now

Remind Me Later

To register your software, do this:

1. Enter your personal information in the **First Name**, **Last Name**, and **Email** entry boxes.
  - Check one or both of the options to receive information from CyberLink, or uncheck if you do not wish to receive this information.
2. Click **Register Now**.
  - If you would like to register this product at a later time, click **Remind Me Later**. The registration box will open each time you run the program until you register.

## CD-Key Activation

After your trial period is over, you will need a CD-Key to activate Cyberlink Power2Go Deluxe version. You can find the CD-Key in the Box, on the CD Cover or in your purchase confirmation e-mail.

To activate your software before your trial period is over, do this:

1. Open Power2Go. Click **Help** on the Menu Bar, then click **Enter Activation Key**. The Power2Go Key Activation window opens.
2. Enter your CD-Key and click **Activate**. Power2Go is now upgraded to the Deluxe version.



# Latest Features

This section describes the latest features in the CyberLink Power2Go program.

## Data Burning

- Burning Blu-ray discs
- Burning on DVD-R DL (8.5G) discs
- Custom CD size

## Music Burning

- Enhanced CD Text support
- Burning music CDs using audio from video clips
- Track gap customization while creating audio CDs

## Video Burning

- Video trimming
- Thumbnail image setting for VCD/DVD menus
- Chapter-based DVD movie authoring for better navigation

## Other

- Reading speed options during disc copy
- UDF 2.5 file system support
- Newly added Express skins
- View burning logs

# Supported File & Disc Types

- **Music formats:** Audio CD, .MP3, .WMA, .WAV
- **Video formats:** .AVI, .DAT (MPEG-1), .MPE, .MPG, .MPEG, .WMV
- **Image formats:** .BMP, .GIF, .JPE, .JPEG, .JPG, .PSD
- **Disc types:** CD-R/RW, DVD-R/RW, DVD+R/RW, DVD-RAM, DVD+R/-R DL, Blu-ray Discs (BD)

# System Requirements

The system requirements listed below are recommended as minimums for burning. You may find that your system, while meeting these recommended minimums, requires expanded capacity during specific burning tasks.

Minimum System Requirements	
OS	<ul style="list-style-type: none"><li>• Windows XP/2000/ME/98SE (Windows XP/2000 recommended)</li></ul>
Screen Resolution	<ul style="list-style-type: none"><li>• 800 x 600 pixels or higher</li></ul>
Memory	<ul style="list-style-type: none"><li>• 128 MB SDRAM for music and data burning</li><li>• 256 MB DDR RAM (512MB recommended) for video burning</li></ul>
CPU	<ul style="list-style-type: none"><li>• VCD (MPEG-1) production: Intel Pentium II 450 MHz</li><li>• DVD (MPEG-2) production: Intel Pentium III 800 MHz, or AMD Athlon 700 MHz (Intel Pentium 4 2.0 GHz, or AMD Athlon 2100+ or above recommended)</li></ul>

## Minimum System Requirements

HDD Space

- 1 GB for making VCD videos
- 5~10 GB for making DVD videos



## Chapter 2:


# Burning

CyberLink Power2Go offers a number of burning functions, including burning data discs, music discs, video/photo discs, mixed discs, and bootable discs, as well as copying the entire contents of a disc. You can burn to CD or DVD in a variety of formats. Before burning a disc, you can set your burning configuration to ensure proper burning.

This chapter contains the following sections:

- Before Burning a Disc on p.18
- Burning Discs on p.30
- Copying Discs on p.51

# Before Burning a Disc

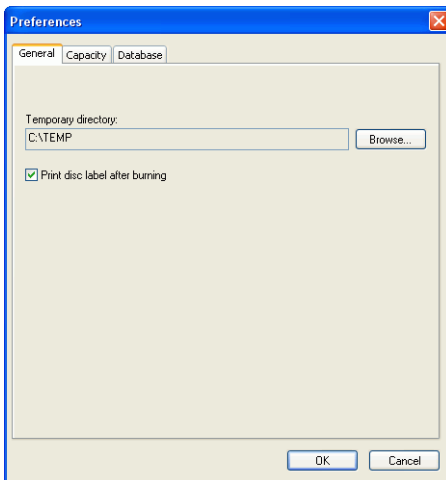
Before you begin burning discs, you may want to set your burning configuration to match your burning drive and the discs you want to burn. Click the **Configuration/Information** button  to open a window that displays disc and drive configuration information.

## Preferences

Power2Go offers several different types of preferences to suit the program to your working methods. To view the program's preferences, click **Project**, then **Preferences**.

### General

Click the General tab to display the General preferences.



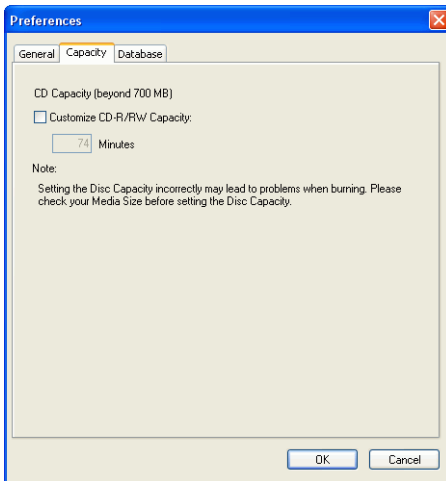
- **Temporary directory:** allows you to set a working directory where Power2Go saves temporary files while burning.

- **Print disc label after burning:** displays a button to open the LabelPrint program immediately after burning, so you can print disc labels and other label types.

**Note:** LabelPrint is an optional feature for Power2Go. In your version of Power2Go, this feature may be limited or unavailable. To obtain the full functioning of this feature, please purchase or install the retail version of LabelPrint. Please consult Cyberlink's online website for further information on acquiring LabelPrint.

## Capacity

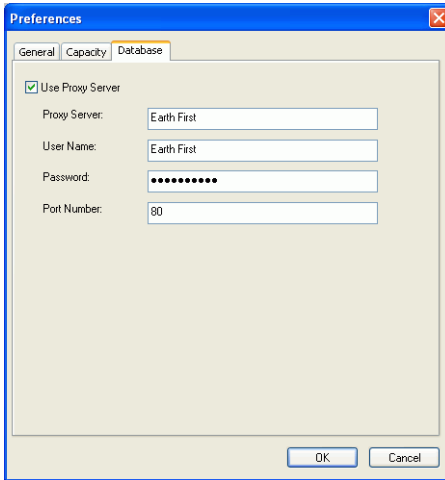
Click the Capacity tab to display the Capacity preferences.



- **CD Capacity:** allows you to set a custom disc size if the CD you are using can hold more than 700MB. To enable this option, check **Customize CD-R/RW capacity**, then enter the new size in the **Minutes** entry box.


## Database

Click the Database tab to display the Internet connection preferences.



- **Use Proxy Server:** allows you to retrieve information related to your music CDs from the Internet before burning. To enable this option, check **Use Proxy Server**, then enter the necessary information in the **Proxy Server**, **User Name**, **Password**, and **Port Number** entry boxes. (This option may be particularly useful for passing through a firewall.)

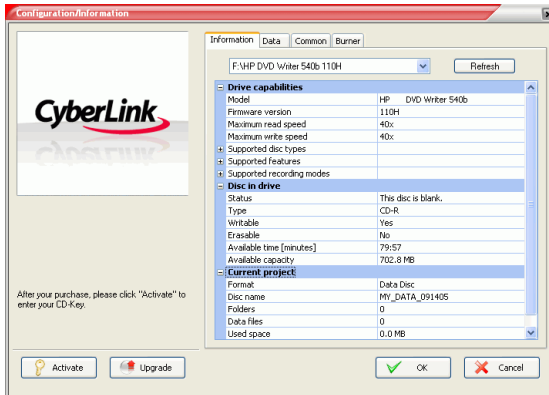
## Configuration Options

To open the Configuration/Information window, click  in the main program window. The Configuration/Information window opens, displaying tabs that contain configuration information related to your current burning task. (Only the Information tab appears if you have not selected a burning task.) Which tabs appear and which options they contain depend on the burning task you have selected.



## Information Tab

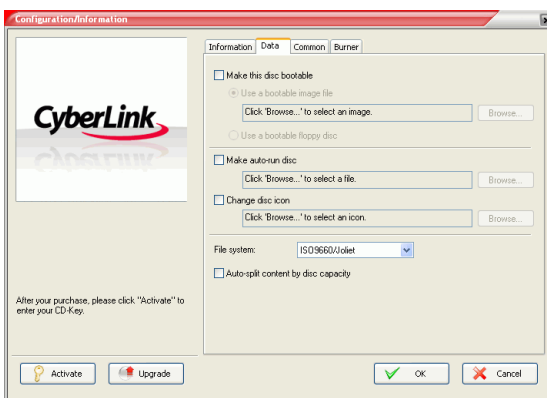
The Information tab displays information about the selected disc drive, the disc in the drive, as well as the current project. Click the + box next to an item to view more detailed information.



- If you change discs or select a different drive, click **Refresh** to ensure that the most updated information is displayed.

## Data Tab

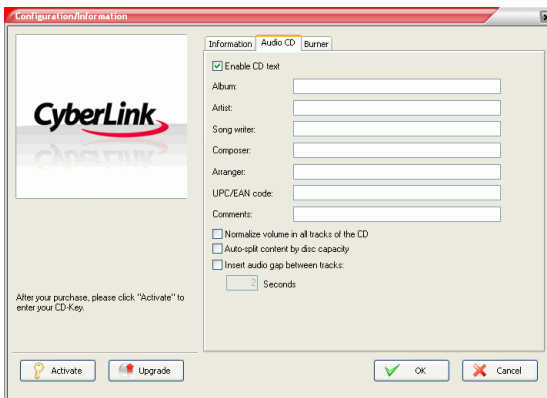
The Data tab displays options for making a Data, CD Extra, or Mixed Mode CD.



- **Make this disc bootable:** You can create a bootable CD, DVD or Blu-ray disc, which you can use to boot your computer from your CD, DVD, or Blu-ray disc drive if your operating system ever fails. Burning a bootable CD, DVD, or Blu-ray disc requires a bootable file (either on your hard drive or on a bootable floppy disc). Check **Use a bootable image file**, then click **Browse...** to locate the file you want to use, or check **Use a bootable floppy disc**.
- **Make auto-run disc:** When this option is enabled, a computer runs the selected auto-run file when the disc is inserted. Click **Browse...**, then locate the auto-run file you want to use. When this option is disabled, the computer takes no action when the disc is inserted.
- **Change disc icon:** You can change the icon that appears when this disc is viewed in Windows Explorer. Click **Browse...**, then locate the icon (.ICO) file you want to use.
- **File system:** Set the File system (ISO9660/Joliet, UDF 1.5, UDF 2.0, or UDF 2.5) of the disc you are burning.
- **Auto-split content by capacity:** automatically divides the files to be burned into volumes (portions) according to the size of the destination disc.

## Audio CD Tab

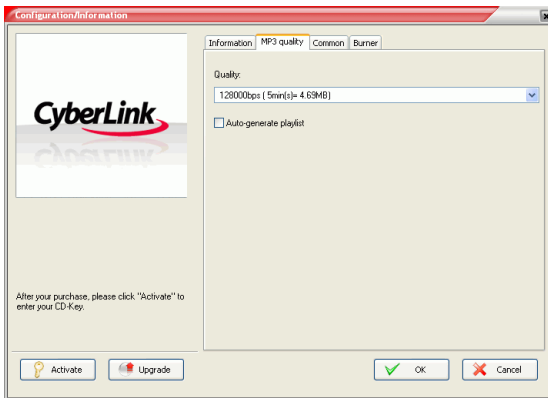
The Audio CD tab displays options for making an Audio CD music disc, or CD Extra or Mixed Mode CD.



- **Enable CD text:** allows you to add textual information (album or artist name) to audio tracks. Enter the desired information in the entry boxes provided.
- **Normalize volume of all tracks on the CD:** adjusts the volume of all of the audio tracks on the CD to the same level.
- **Auto-split content by capacity:** automatically divides the files to be burned into volumes (portions) according to the size of the destination disc.
- **Insert audio gap between tracks:** allows you to add silence between tracks. Enter the desired duration in the Seconds box.

## MP3 Quality Tab

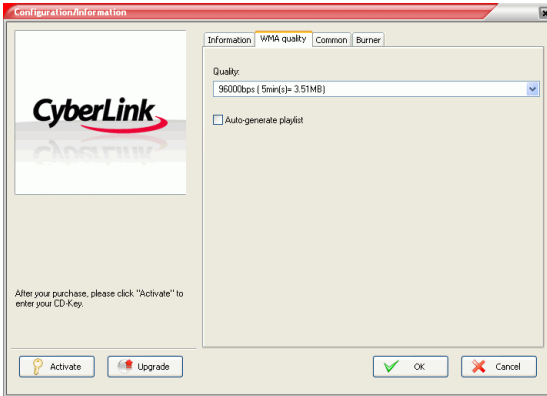
The MP3 Quality tab displays options for making an MP3 music disc.



- **Quality:** Select a quality from the drop-down box.
- **Auto-generate playlist:** creates a playlist based on the songs you have added to your disc.

## WMA Quality Tab

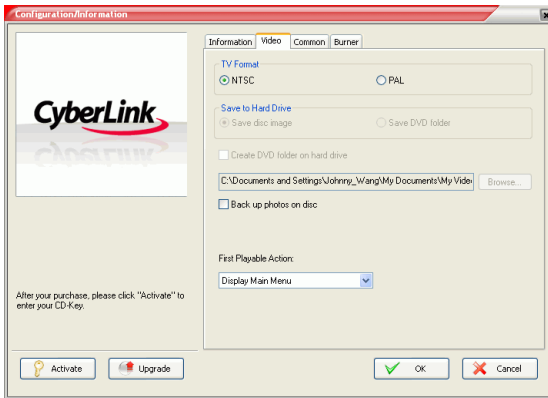
The WMA Quality tab displays options for making a WMA music disc.



- **Quality:** Select a quality from the drop-down box.
- **Auto-generate playlist:** creates a playlist based on the songs you have added to your disc.

## Video Tab (for VCD)

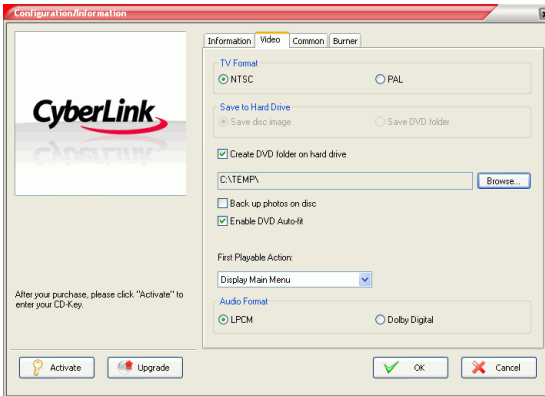
The Video tab displays options for making a VCD or video DVD. The options described below pertain to VCDs only.



- **TV format:** Set the TV format (NTSC or PAL) of the video you are burning to disc.
- **Back up photos on disc:** Make backup copies of your original photos whose resolution is higher than that of your final movie production.
- **First Playable Action:** Set the first action the VCD Player will take when you insert this disc into the VCD Player.

## Video Tab (for DVD)

The Video tab displays options for making a VCD or video DVD. The options described below pertain to DVDs only.



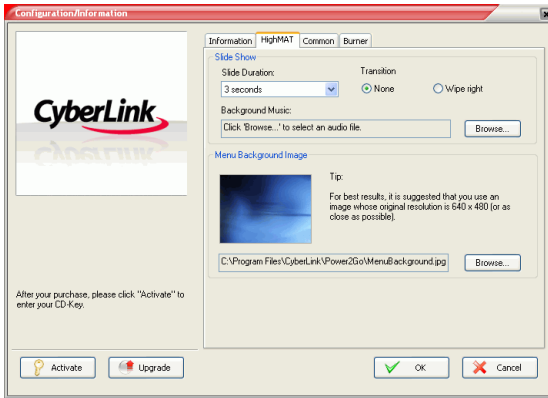
- **TV format:** Set the TV format (NTSC or PAL) of the video you are burning to disc.
- **Save to Hard Drive:** Check an option to burn both a disc image and a DVD folder, or only a DVD folder, to your hard drive. If you check the **Create DVD folder on hard drive** option, click **Browse...** to locate the folder you want to use.
- **Back up photos on disc:** Make backup copies of your original photos whose resolution is higher than that of your final movie production.
- **Enable DVD Auto-fit:** Check this option to automatically fit the video onto one disc with the best quality.
- **Audio Format:** Select **LPCM** (an uncompressed audio format) or **Dolby Digital** (uses the Dolby Digital Consumer Encoder format).

**Note:** In your version of Power2Go, this feature may be limited. To obtain the full functioning of this feature, please purchase or install the retail version of Power2Go. (To check your version of Power2Go, click the **About** button.) Version information is provided in the Readme file.

- **First Playable Action:** Set the first action the DVD Player will take when you insert this disc into the DVD Player.

## HighMAT Tab

The HighMAT tab displays options for making a HighMAT disc.

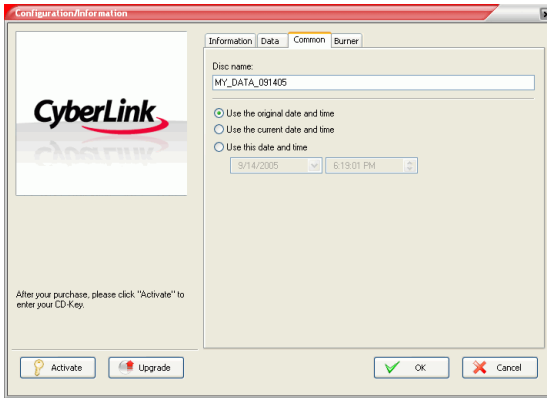


- **Slide Duration:** Select a duration from the drop-down box. To control a slideshow manually, select **Manual**.
- **Transition:** Select the transition type (**None** or **Wipe Right**) you want to use in your slide show.
- **Background Music:** To set background music on your disc's menu page, click **Browse...**, then locate the music file you want to use.
- **Menu Background Image:** To set a background image on your disc's menu page, click **Browse...**, then locate the image file you want to use.

**Note:** For best results, it is suggested that you use an image whose original resolution is 640 x 480 (or as close as possible).

## Common Tab

The Common tab displays options available when burning different kinds of discs.

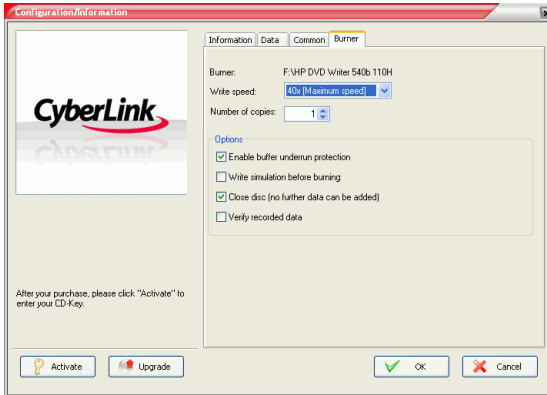


- **Disc name:** Enter a name for the disc. The disc name appears on a disc player when the disc is played.
- **Use original date and time:** This option uses the original date and time of the files that will be burned to the disc.
- **Use current date and time:** This option uses the current date and time on your computer.
- **Use this date and time:** This option uses a date and time of your choosing.



## Burner Tab

The Burner tab displays information about your disc burner and options for controlling its functioning.



- **Burner:** Displays the selected disc burner.
- **Write speed:** Select a write speed from the drop-down list.
- **Number of copies:** Enter the number of copies of the disc you want to burn.
- **Enable buffer underrun protection:** Enabling this option ensures that data is written to disc without interruption. (An interruption in data can result in an unusable disc.)
- **Write simulation before burning:** Perform a write simulation to verify that your burner can burn to the disc at the selected speed without error.

**Note:** If you have enabled buffer underrun protection or have previously burned discs using the current configuration, you do not need to run a simulation.

- **Close disc:** Checking this option write-protects the disc. No further data can be appended to the disc after the current burning session.
- **Verify recorded data:** Check this option to compare recorded data to the source data to ensure accurate burning.

# Burning Discs

The fastest way to burn any kind of disc is to drag and drop files from Windows Explorer onto the appropriate icon on the desktop. This method of burning is called Power2Go Express mode. This method is presented first in each of the following sections, as you may be able to accomplish your burning task without even opening the Power2Go program.

If you need to select more detailed options, or if you are already working in the Power2Go program, you can perform the same burning tasks within the program itself. This method of burning is called Power2Go mode, and is described after the Power2Go Express procedure, being the slightly longer and more complex process.

## Multisession Discs

Multisession discs allow you to append additional data after the original burning session. Power2Go creates a multisession disc whenever you burn a CD-R, CD-RW, DVD-R, DVD+R, or Blu-ray disc and choose not to close the disc. Therefore, you can continue to add content to a multisession disc until the disc is full or closed, at which point you can no longer append any further data.

## Burn a Data Disc

The Data Disc option allows you to burn data files to a CD-R/RW, DVD-R/RW, DVD+R/RW, DVD-RAM, or Blu-ray disc. Data files can include images and any other document files. You can also create a bootable CD, DVD, or Blu-ray disc, which you can use to boot your computer from your CD, DVD, or Blu-ray disc drive if your operating system ever fails.

### Burn a Data Disc in Power2Go Express Mode

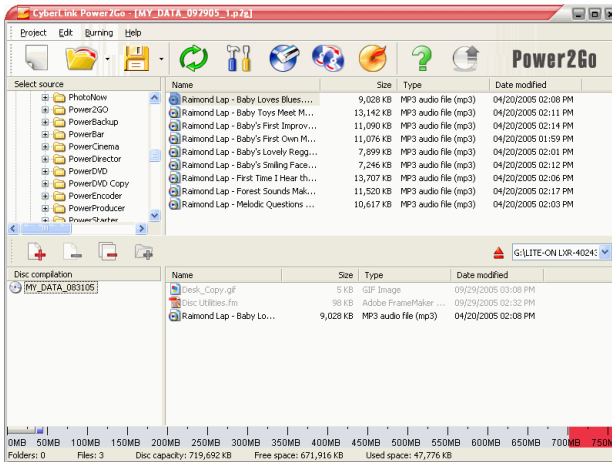
To burn a data disc in Power2Go Express mode, do this:






1. Open Windows Explorer, then locate the files you want to burn.
2. Drag the files to the **Data** icon.
  - To modify your burning configuration, double-click the **Data** icon. For more information, see Burn a Data Disc in Power2Go Mode on p.32.
3. Click **Rec** on the **Data** icon. Power2Go burns the disc.

## Burn a Data Disc in Power2Go Mode

To burn a data disc in Power2Go mode, do this:

1. Open Power2Go. In the Select a Burning Task window, click the **Data Disc** icon, then select the type of disc (CD, DVD or Blu-ray) you want to create. The Data Disc window opens.



2. Select your burning drive from the drop-down box.
3. Highlight the files or folders you want to burn, then drag to the destination disc or click .
  - To remove a file, highlight it, then click .
  - To remove all files, click .
  - To create a new folder in the directory, click . A folder is created under the current directory.
4. When you have added all of the content that you want to burn, click . The Configuration/Information window opens to the Burner tab, to allow you to set your burning configuration. (For more information, see Burner Tab on p.29.)
5. Make any necessary modifications to your burning configuration, then click **Burn**. Power2Go burns the disc.


6. When burning is complete, select an option in the dialog box that opens:
  - Click **Print Label** to print a disc label. The LabelPrint program opens. For information on using LabelPrint, see that program's online help system.

**Note:** LabelPrint is an optional feature for Power2Go. In your version of Power2Go, this feature may be limited or unavailable.


- Click **View Log** to view the burning log. The log opens in your default TXT editor, where you can view and save it.

### Burn a Bootable Data Disc from an Image File

To burn a bootable data disc from an image file, do this:

1. Open Power2Go. In the Select a Burning Task window, click the **Data Disc** icon, then select **CD**, **DVD**, or **Blu-ray**.
2. Highlight the files or folders you want to burn, then drag to the destination disc or click .

**Note:** You can burn a bootable disc with or without adding other data.


3. Click . The Configuration/Information window opens to the Data tab.
4. Check the **Make this disc bootable** option.
5. Check the **Use a bootable image file** option. Click **Browse...**, then locate the bootable disc partition. Click **OK**.
6. Click **Burn**. Power2Go burns the disc.
7. When burning is complete, select an option in the dialog box that opens:
  - Click **Print Label** to print a disc label. The LabelPrint program opens. For information on using LabelPrint, please check the program's online help system.

**Note:** LabelPrint is an optional feature for Power2Go. In your version of Power2Go, this feature may be limited or unavailable.


- Click **View Log** to view the burning log. The log opens in your default TXT editor, where you can view and save it.

### Burn a Bootable Data Disc from a Floppy Disc

To burn a bootable data disc from a bootable floppy disc, do this:

1. Open Power2Go. In the Select a Burning Task window, click the **Data Disc** icon, then select **CD, DVD, or Blu-ray**.
2. Highlight the files or folders you want to burn, then drag to the destination disc or click  .

**Note:** You can burn a bootable disc with or without adding other data.

3. Click  . The Configuration/Information window opens to the Data tab.
4. Check the **Make this disc bootable** option.
5. Check the **Use a bootable floppy disc** option.
6. Click **Burn**. A prompt appears, asking you to insert your bootable floppy disc.
7. Insert the floppy disc, then click **OK**. Power2Go copies the disc. When the copy task is complete, the disc drive opens and a prompt appears, asking you to insert your target disc.
8. Insert your target disc into your burning drive, then click **OK**.
9. Power2Go burns the disc.
10. When burning is complete, select an option in the dialog box that opens:
  - Click **Print Label** to print a disc label. The LabelPrint program opens. For information on using LabelPrint, please check the program's online help system.

**Note:** LabelPrint is an optional feature for Power2Go. In your version of Power2Go, this feature may be limited or unavailable.

- Click **View Log** to view the burning log. The log opens in your default TXT editor, where you can view and save it.

## Burn a Music Disc

The Music Disc option allows you to burn audio files to a CD or DVD. You can also record audio from video files. Depending on the audio file format you burn to, you may require a special player or player software to be able to listen to your disc.

### Burn an Audio CD Music Disc in Power2Go Express Mode

To burn a music disc in Power2Go Express mode, do this:

1. Open Windows Explorer, then locate the files you want to burn.
2. Drag the files to the **Music** icon.
  - To modify your burning configuration, double-click the **Music** icon. For more information, see *Burn an Audio CD Music Disc in Power2Go Mode* on p.36.

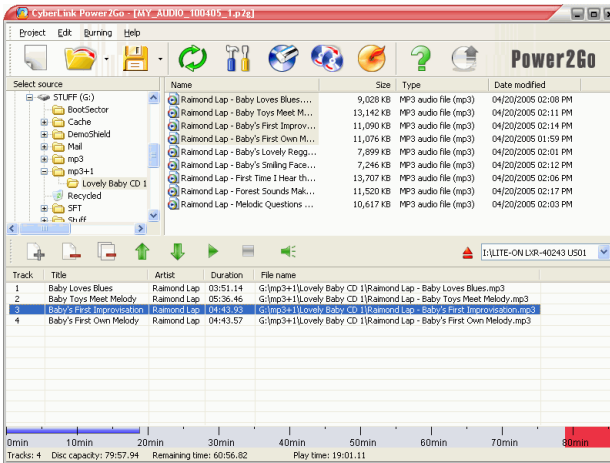
**Note:** You can drag video files to burn the audio on the video files. All music discs burned in Power2Go Express mode are burned in Audio CD format.









3. Click **Rec** on the **Music** icon. Power2Go burns the disc.

## Burn an Audio CD Music Disc in Power2Go Mode

To burn an Audio CD music disc in Power2Go mode, do this:

1. Open Power2Go. In the Select a Burning Task window, click the **Music Disc** icon. Select **CD**, then check the **Audio CD** format. The Audio Disc window opens.



2. Select your burning drive from the drop-down box.
3. Locate the files you want to add in the directory on the left. Highlight the files you want to burn on the right, then drag to the list at the bottom of the window or click .
  - To remove a file, highlight it, then click .
  - To remove all files, click .
  - To move a file up or down in the list, highlight it, then click  or .
  - To play a file before burning, highlight it, then click . Click  to stop. Drag the slider to set the audio volume level.
4. When you have added all of the content that you want to burn, click . The Configuration/Information window opens to the Burner tab. (See Burner Tab on p.29.)



5. Modify your burning configuration (if necessary), then click **Burn**. Power2Go burns the disc.
6. When burning is complete, select an option in the dialog box that opens:
  - Click **Print Label** to print a disc label. The LabelPrint program opens. For information on using LabelPrint, please check the program's online help system.

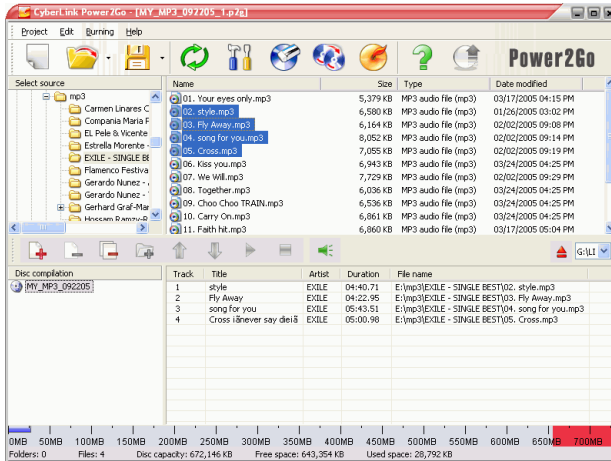
**Note:** LabelPrint is an optional feature for Power2Go. In your version of Power2Go, this feature may be limited or unavailable.

- Click **View Log** to view the burning log. The log opens in your default TXT editor, where you can view and save it.


## Burn an MP3/WMA Music Disc in Power2Go Mode







To burn an MP3/WMA music disc in Power2Go mode, do this:

1. Open Power2Go. In the Select a Burning Task window, click the **Music Disc** icon. Select **CD** or **DVD**, then check the **MP3** or **WMA** format. The MP3/WMA Disc window opens.



2. Select your burning drive from the drop-down box.
3. Locate the files you want to add in the directory on the left. Highlight the files and folders you want to burn on the right,

then drag to the directory tree at the bottom of the window or click .

- To remove a file, highlight it, then click .
  - To remove all files, click .
  - To create a new folder in the directory, click . A folder is created under the current directory.
  - To play a file before burning, highlight it, then click . Click  to stop. Drag the slider to set the audio volume level.
4. When you have added all of the content that you want to burn, click . The Configuration/Information window opens to the Burner tab. (See Burner Tab on p.29.)
  5. Modify your burning configuration (if necessary), then click **Burn**. Power2Go burns the disc.
  6. When burning is complete, select an option in the dialog box that opens:
    - Click **Print Label** to print a disc label. The LabelPrint program opens. For information on using LabelPrint, please check the program's online help system.

**Note:** LabelPrint is an optional feature for Power2Go. In your version of Power2Go, this feature may be limited or unavailable.

- Click **View Log** to view the burning log. The log opens in your default TXT editor, where you can view and save it.

## Burn a Video/Photo Disc

The Video/Photo Disc option allows you to burn movie files to CD/DVD. You can also burn a slide show to disc or include a slide show along with your movie.

### Burn a Video/Photo Disc in Power2Go Express Mode

To burn a video/photo disc in Power2Go Express mode, do this:

1. Open Windows Explorer, then locate the files you want to burn.

**Note:** You can drag image files to burn a slide show, video files to burn a video disc, or both image and video files to burn a disc with both a video and a slide show.

2. Drag the files to the **Video/Photo** icon.

- To modify your burning configuration, double-click the **Video/Photo** icon. For more information, see *Burn a Video/Photo Disc in Power2Go Mode* on p.40.

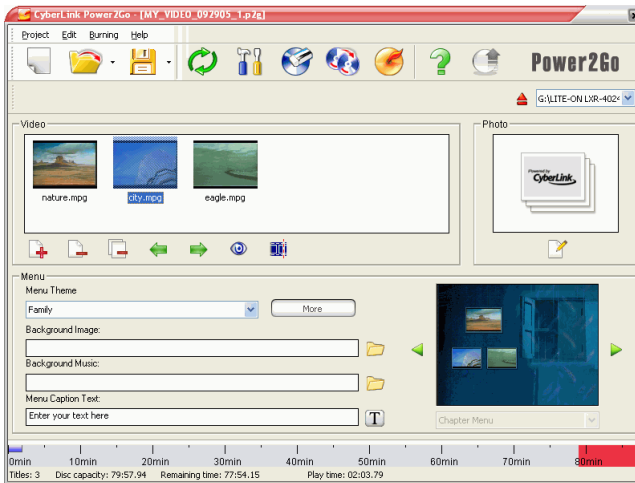
**Note:** Slide shows created in Express mode have a default slide duration of 3 seconds.







3. Click **Rec** on the **Video/Photo** icon. Power2Go burns the disc.

## Burn a Video/Photo Disc in Power2Go Mode

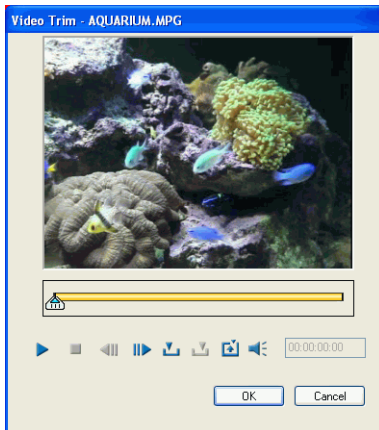
To burn a video/photo disc in Power2Go mode, do this:

1. Open Power2Go. In the Select a Burning Task window, click the **Video/Photo Disc** icon. Select **Video CD** or **DVD-Video**, then click **OK**. The Video/Photo Disc window opens.







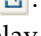




2. Select your burning drive from the drop-down box.
3. Click  to add files to your disc.
  - To remove a file, highlight it, then click .
  - To remove all files, click .
  - To move a file left or right in the Video pane, highlight it, then click  or .
  - To preview a video title, click .

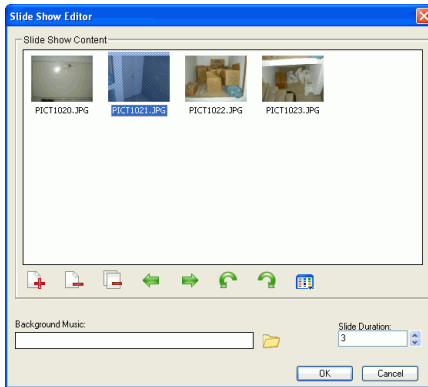
4. To trim video, click . The Video Trim dialog box opens.















**Note:** In your version of Power2Go, this feature may be limited or unavailable. To obtain the full functioning of this feature, please purchase or install the retail version of Power2Go. (To check your version of Power2Go, click the **About** button.) Version information is provided in the Readme file.

- To play a video file, click .
- To pause playback, click .
- To stop video playback, click .
- To skip backward one frame, click .
- To skip forward one frame, click .
- To set the Mark In point for trimming, click .
- To set the Mark Out point for trimming, click .
- To set the current video frame as the file's display thumbnail, click .
- To adjust the video file's volume, click , then adjust the volume level using the slider, or click the speaker icon to mute or unmute the sound.

5. To add a slide show, click . The Slide Show Editor opens.



- To remove a file, highlight it, then click .
  - To remove all files, click .
  - To move a slide left or right in the Slide Show Content pane, highlight it, then click  or .
  - To rotate a slide, click its thumbnail, then click one of the rotate buttons.
  - To sort slides, click , then select a sorting method.
  - To browse for background music, click , then locate the music file you want to use.
  - To set the duration each slide will appear in the slide show, set a time in the Slide Duration box.
6. Customize your disc menu, if desired.
- To select a menu theme, select one from the drop-down menu. To download more themes, click **More....** A browser window opens to the CyberLink store, where you can purchase additional themes.
  - To select a different background, select a background from the drop-down box or click  or  to scroll through the available backgrounds. To browse for a background image, click , then locate the file you want to use.
  - To browse for background music, click , then locate the file you want to use.

- To select a font, click , then select the desired font style.
7. When you have added all of the content that you want to burn, click . The Configuration/Information window opens to the Burner tab. (See Burner Tab on p.29.)
  8. Modify your burning configuration (if necessary), then click **Burn**. Power2Go burns the disc.
  9. When burning is complete, select an option in the dialog box that opens:
    - Click **Print Label** to print a disc label. The LabelPrint program opens. For information on using LabelPrint, please check the program's online help system.

**Note:** LabelPrint is an optional feature for Power2Go. In your version of Power2Go, this feature may be limited or unavailable.

- Click **View Log** to view the burning log. The log opens in your default TXT editor, where you can view and save it.

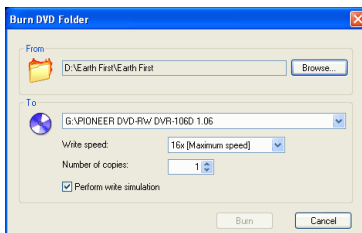
## Burning a DVD Folder



A DVD folder is a directory folder specifically created to store media content destined to be burned to disc. Using the Burn DVD Folder utility, you can burn a DVD folder to a DVD-R/RW, DVD+R/RW, or DVD+/-R DL disc.

To burn a DVD folder, do this:

1. Start CyberLink Power2Go.
2. In the Select a Burning Task window, click the **Video/Photo Disc** icon. In the Select a Burning Task window, click **Disc Utilities**, then select **Burn from existing DVD Folder**.



3. Click **Browse...**, then select a destination folder.
4. Insert your disc and select your drive in the drop-down list.
  - You can select a different write speed or enter the number of copies you want to burn, if desired. If you want to perform a write simulation before you burn the disc, check **Perform write simulation**.
5. Click **Burn** to start. Power2Go displays the real-time progress of the task. When the task is completed, a screen message appears, informing you of the status.
6. When burning is complete, select an option in the dialog box that opens:
  - Click **Print Label** to print a disc label. The LabelPrint program opens. For information on using LabelPrint, please check the program's online help system.

**Note:** LabelPrint is an optional feature for Power2Go. In your version of Power2Go, this feature may be limited or unavailable.

- Click **View Log** to view the burning log. The log opens in your default TXT editor, where you can view and save it.



## Burn a Mixed Disc

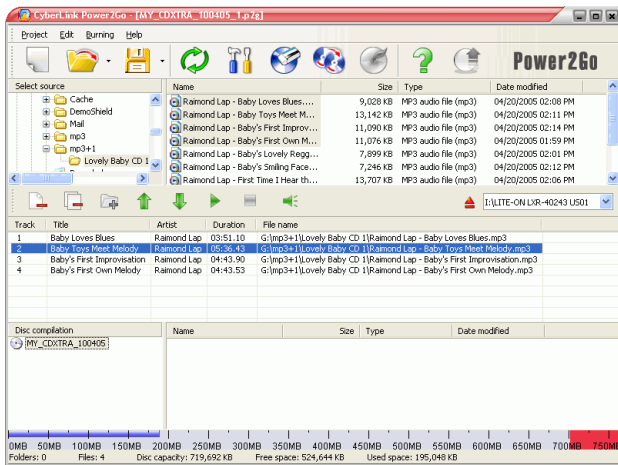
The Mixed Disc option allows you to burn mixed content to CD. The different disc formats (CD Extra, Mixed Mode CD, and HighMAT) allow you to burn different types of media to the same disc. Each of the formats is slightly different, so the different formats are presented separately below.

### CD Extra

The CD Extra format allows you to burn audio files (in CDA, MP3, WAV, or WMA format) and the audio of video files in Audio CD format followed by data files and folders on the same CD-R/RW disc. You can play the music on your computer with the proper playback software or in a normal CD player, and view the data files like a normal data disc.

To burn a CD Extra disc, do this:








1. Open Power2Go. In the Select a Burning Task window, click the **Mixed Disc** icon, then select **CD Extra**. The CD Extra window opens.



2. Select your burning drive from the drop-down box.

3. Drag and drop music or video files to the middle pane.  
(Dragging a folder to the pane adds the files it contains, but does not create a folder on the disc.)

**Note:** If you drag music or video files to the bottom pane, you will be unable to play them later, as they will be read as data files.

- To remove a file, highlight it, then click .
  - To remove all files, click .
  - To move a file up or down in the list, highlight it, then click  or .
  - To play a file before burning, highlight it, then click . Click  to stop. Drag the slider to set the audio volume level.
4. Drag and drop data files and folders to the bottom pane.  
(Dragging a folder to the pane creates a folder on the disc.)
  5. When you have added all of the content that you want to burn, click . The Configuration/Information window opens to the Burner tab, to allow you to set your burning configuration.  
(For more information, see Burner Tab on p.29.)
  6. Make any necessary modifications to your burning configuration, then click **Burn**. Power2Go burns the disc.
  7. When burning is complete, select an option in the dialog box that opens:
    - Click **Print Label** to print a disc label. The LabelPrint program opens. For information on using LabelPrint, please check the program's online help system.

**Note:** LabelPrint is an optional feature for Power2Go. In your version of Power2Go, this feature may be limited or unavailable.

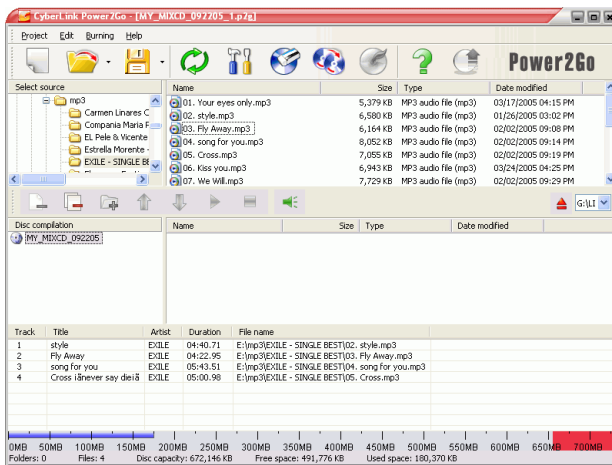
- Click **View Log** to view the burning log. The log opens in your default TXT editor, where you can view and save it.

## Mixed Mode CD

Mixed Mode format allows you to burn data files and folders followed by audio files (in CDA, MP3, WAV, or WMA format) and the audio of video files in Audio CD format on the same CD-R/RW disc. You can play the music on your computer with the proper playback software, and view the data files like a normal data disc.








To burn a Mixed Mode CD disc, do this:

1. Open Power2Go. In the Select a Burning Task window, click the **Mixed Disc** icon, then select **Mixed Mode CD**. The Mixed Mode CD window opens.



2. Select your burning drive from the drop-down box.
3. Drag and drop data files and folders to the middle pane. (Dragging a folder to the pane creates a folder on the disc.)
4. Drag and drop music or video files to the bottom pane. (Dragging a folder to the pane adds the files it contains, but does not create a folder on the disc.)

**Note:** If you drag music or video files to the middle pane, you will be unable to play them later, as they will be read as data files.

- To remove a file, highlight it, then click .
  - To remove all files, click .
  - To move a file up or down in the list, highlight it, then click  or .
  - To play a file before burning, highlight it, then click . Click  to stop. Drag the slider to set the audio volume level.
5. When you have added all of the content that you want to burn, click . The Configuration/Information window opens to the Burner tab, to allow you to set your burning configuration. (For more information, see Burner Tab on p.29.)
  6. Make any necessary modifications to your burning configuration, then click **Burn**. Power2Go burns the disc.
  7. When burning is complete, select an option in the dialog box that opens:
    - Click **Print Label** to print a disc label. The LabelPrint program opens. For information on using LabelPrint, please check the program's online help system.

**Note:** LabelPrint is an optional feature for Power2Go. In your version of Power2Go, this feature may be limited or unavailable.

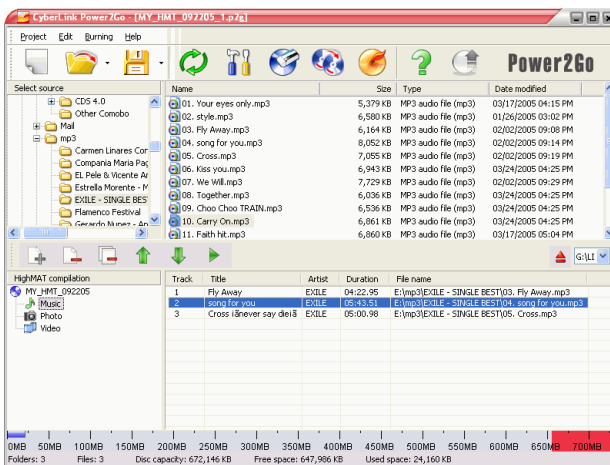
- Click **View Log** to view the burning log. The log opens in your default TXT editor, where you can view and save it.






## HighMAT CD


HighMAT format allows you to burn a specially formatted data disc with movie, image, and music files that can be played on your computer or on a HighMAT player. Since the files are copied onto the disc instead of encoded, this format offers the advantage of retaining the original file quality.

To burn a HighMAT disc, do this:


1. Open Power2Go. In the Select a Burning Task window, click the **Mixed Disc** icon, then select **HighMAT**. The HighMAT window opens.



2. Select your burning drive from the drop-down box.
3. Highlight the files or folders you want to burn, then drag to the destination disc or click .
  - Click the **Music**, **Photo**, and **Video** icons to display the files that have been added under each category.
  - To remove a file, highlight it, then click .
  - To remove all files, click .
  - To move a file up or down in the list, highlight it, then click  or .

- To play a file before burning, highlight it, then click . The Media Preview window opens, in which you can preview media clips using full playback controls.



4. When you have added all of the content that you want to burn, click . The Configuration/Information window opens to the Burner tab, to allow you to set your burning configuration. (For more information, see Burner Tab on p.29.)
5. Make any necessary modifications to your burning configuration, then click **Burn**. Power2Go burns the disc.
6. When burning is complete, select an option in the dialog box that opens:
  - Click **Print Label** to print a disc label. The LabelPrint program opens. For information on using LabelPrint, please check the program's online help system.

**Note:** LabelPrint is an optional feature for Power2Go. In your version of Power2Go, this feature may be limited or unavailable.

- Click **View Log** to view the burning log. The log opens in your default TXT editor, where you can view and save it.


# Copying Discs

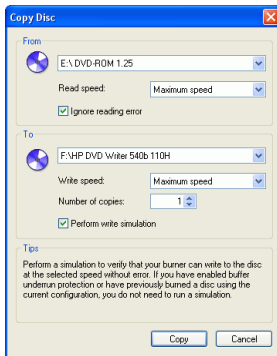
The Copy Disc option allows you to make an exact copy of a disc of a disc of any format. However, you must copy the disc contents onto a blank disc of the same disc type. (You cannot, for example, copy content from a CD onto a DVD.)

**Note:** Some discs may not be copied if they are copy-protected or contain errors.

The procedures for copying a disc from inside the Power2Go program or in Power2Go Express mode are very similar. Only the first step for opening the Copy Disc window is slightly different.

To copy a disc, do this:

1. Open Power2Go.
2. Open the Copy Disc window.
  - **Power2Go mode:** In the Select a Burning Task window, click the **Copy Disc** icon , then click **OK**.
  - **Express mode:** Double-click the **Copy Disc** icon.



3. Select your source and target drives.
4. Select a read and a write speed and enter the number of disc copies you want to burn.

- If you wish to copy the disc even if errors are encountered, check **Ignore reading error**.
  - If you want to perform a write simulation before you burn the disc, check **Perform write simulation**.
5. Click **Copy**. Power2Go burns the copied data onto the disc.
  6. When burning is complete, select an option in the dialog box that opens:
    - Click **View Log** to view the burning log. The log opens in your default TXT editor, where you can view and save it.



## Chapter 3:

# Disc Utilities

In addition to simple disc burning functions, CyberLink Power2Go offers a number of other utilities for managing your discs and your disc image files, as well as for ripping audio tracks from an Audio CD onto your hard disk. These utilities are available in the Select a Burning Task window in Power2Go mode.

This chapter contains the following sections:

- Burning a Disc Image on p.54
- Saving a Disc Image on p.55
- Erasing a Disc on p.56
- Ripping Audio on p.57
- Converting Audio Files on p.59

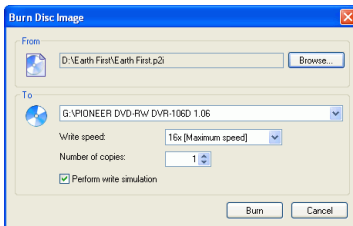
# Burning a Disc Image



A disc image is a duplicate of the content and file structure that is destined to be burned to disc. Using Power2Go, you can burn a disc image to CD or DVD. Burning a disc image to disc allows you to restore a saved disc image to disc as well as burn disc images created by the CyberLink Image Recorder.

To burn a disc image, do this:

1. Start CyberLink Power2Go.
2. In the Select a Burning Task window, click **Disc Utilities**, then select **Burn Disc Image**.



3. Click **Browse...** and locate the disc image.
4. Insert your disc and select your drive in the drop-down list.
  - You can select a different write speed or enter the number of copies you want to burn, if desired. If you want to perform a write simulation before you burn the disc, check **Perform write simulation**.
5. Click **Burn** to start. Power2Go displays the real-time progress of the task. When the task is completed, a screen message appears, informing you of the status.
6. When burning is complete, select an option in the dialog box that opens:
  - Click **View Log** to view the burning log. The log opens in your default TXT editor, where you can view and save it.

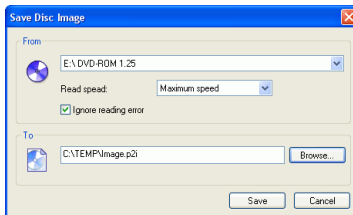
# Saving a Disc Image



Save a disc image onto your hard drive. This function is useful for backing up your disc onto your hard drive for future burning tasks.

To save a disc image, do this:

1. Start CyberLink Power2Go.
2. In the Select a Burning Task window, click **Disc Utilities**, then select **Save Disc Image**.



3. Insert your disc. If necessary, select your source drive in the From drop-down box.
4. Enter the destination folder and disc image file name in the To entry box, or click **Browse...**, select a folder, and enter the disc image file name.
5. Click **Save** to save the disc image. Power2Go displays the real-time progress of the task. When the task is completed, a screen message appears, informing you of the status.

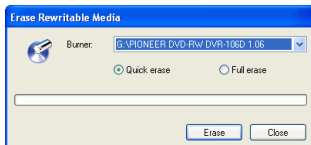
# Erasing a Disc



If you are using a rewritable disc, you can erase content that has been previously recorded onto it. This allows you to reuse the same discs over and over without the need to continually buy new discs. Most manufacturers suggest that current rewritable discs can be written to about 1,000 times.

To erase a disc, do this:

1. Start CyberLink Power2Go.
2. In the Select a Burning Task window, click **Disc Utilities**, then select **Erase Disc**.



3. Insert your disc and select your burner.
4. Select an erasing method.
  - The **Quick erase** option erases the disc index contained on the disc.
  - The **Full erase** option erases all of the content the disc contains.
5. Click **Erase** to start. Power2Go displays the real-time progress of the task. When the task is completed, a screen message appears, informing you of the status.

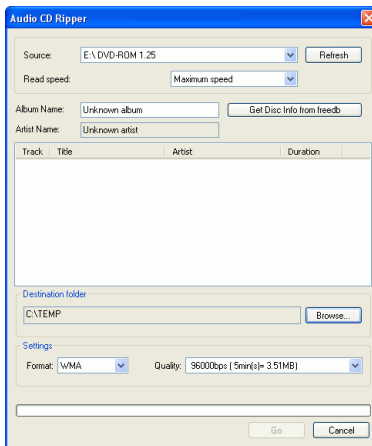
# Ripping Audio



The Rip Audio function copies audio tracks from an Audio CD to your hard drive in MP3, WAV, or WMA format. You can also copy audio tracks on CD-Extra CD and Mixed Mode CD. Keeping copies of your CDs on your hard drive allows you to play songs from numerous CDs without changing discs in your computer's disc drive and also saves wear and tear on your physical CD collection.

To rip audio files to your hard drive, do this:

1. Start CyberLink Power2Go.
2. In the Select a Burning Task window, click **Disc Utilities**, then select **Rip Audio**.



3. Insert your disc and select your drive.
  - If you change discs or select a different drive, click **Refresh** to ensure that the most updated information is displayed.
4. Select the audio track(s) you want to rip to your hard drive.

**Note:** In your version of Power2Go, this feature may be limited or unavailable. To obtain the full functioning of this feature, please purchase or install the retail version of Power2Go. (To check your version of Power2Go, click the **About** button.) Version information is provided in the Readme file.

5. Locate the folder you want to rip the audio tracks to.
  - You can select a different audio format or quality, if desired.
6. Click **Go** to start. Power2Go displays the real-time progress of the task. When the task is completed, a screen message appears, informing you of the status.

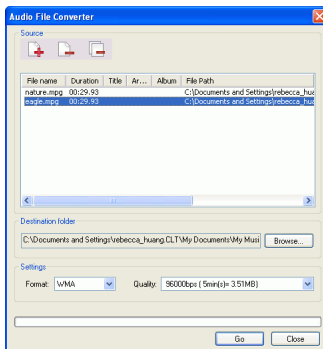
# Converting Audio Files






Use the Audio Converter utility to convert an audio file to a different audio format (to and from the MP3, WAV, and WMA formats). You can convert an audio file to a different quality. You can also record audio from video clips.

To convert an audio or video file, do this:

1. Start CyberLink Power2Go.
2. In the Select a Burning Task window, click **Disc Utilities**, then select **Audio Converter**. The Audio File Converter window opens.



3. Click , then select the file(s) you want to convert. Click **Import** to open the files.
  - To remove a file, highlight it, then click .
  - To remove all files, click .
4. Click **Browse...**, then select a destination folder.
5. Specify the format you want to convert the files to, and, if necessary, select a quality from the drop-down box.

6. Click **Go** to start. Power2Go displays the real-time progress of the task. When the task is completed, a screen message appears, informing you of the status.



# Appendix

This chapter contains technical support information as well as a reference section to help answer questions you may have about the different disc technologies available in CyberLink Power2Go.

This chapter contains the following sections:

- Technical Support on p.62
- Disc Types on p.64

# Technical Support

Before asking CyberLink for technical support, please refer to this user's guide or online help for information. It contains all the information you generally need to use the program. You may also find answers quickly by contacting your local distributor/dealer.

If your problem is not resolved using the above methods, please feel free to contact CyberLink for technical support.

## Web Support

Solutions to your problems are available 24 hours a day and at no cost on our Web sites:

[support.gocyberlink.com](http://support.gocyberlink.com)

[www.cyberlink.com](http://www.cyberlink.com)

In addition to frequently asked questions, we also provide troubleshooting techniques, the latest in product news, and other relevant information.

## Fax Support

Use our fax support number to get technical support quickly without spending time on the phone:

**(886) 2-8667-1300**

**Note:** Technical support is only offered to registered users, so please make sure to include your **CD-key** (located on your CD case) when faxing.

# Telephone Support

You are welcome to call the CyberLink's Technical Support Hotline at the phone number listed below during hours of availability:

## CyberLink Technical Support Information

**Support Phone Number**      **(886) 2-8667-1298**

**Support Hours**      **9:00 a.m. -5:00 p.m.** Taiwan time (GMT +8:00)  
Monday to Friday, excluding holidays

**Note:** Technical support is only offered to registered users. Please be sure to have your **CD-key** (located on your CD case) on hand when calling.

When calling for support, please have your computer ready and provide us with the following information:

- **your registered CD-key**
- the product version
- the version of Windows installed on your system
- the hardware devices on your system and their specifications
- the wording of any warning messages that were displayed (You may want to write this down or make a screen capture.)
- a detailed description of the problem and under what circumstances it occurred

# Disc Types

CDs and DVDs look the same and do pretty much the same thing: store data. Both can be used to record data, music, or video files. However, CDs and DVDs are incompatible, bringing different advantages and disadvantages. Therefore, the decision of which to use is left up to you. You can avoid any confusion over which disc type to use by asking yourself two simple questions:

- **What disc type is supported by my disc burner?**
- **What disc type is supported by my disc player?**

Knowing the answers to these questions goes a long way towards deciding on a disc type: after all, you want to be able to play your disc after burning it, and of course, your burner must support the disc type you want to create.

In broad terms, discs are divided into CD (which, being the earlier technology, is more widely supported) and DVD (which holds seven times the amount of content, but requires a special drive). Following is a brief description of the different disc types supported by CyberLink Power2Go.

## CD Types

CDs contain up to 74/80 minutes of high quality video or 650/700 MB of data.

- CD-R** CD-R is a once-writable format. CD-RW burners and most new DVD burners can write in CD-R, and most DVD players can also read this format. The CD-R format is commonly used for distribution of computer data and digital audio.
- CD-RW** CD-RW is a rewritable CD format. CD-RW burners and most new DVD burners can write in CD-RW, and most DVD players can also read this format. The CD-RW format is best suited for storage of computer data and digital audio.

## DVD Types

DVD is a high capacity disc that holds anywhere from 4.7-17 GB of data, or from roughly 2-8 hours of video (depending on the type of DVD). Using the High Quality setting, you can expect to be able to record 1-2 hours of video.)

DVDs can be played on DVD players and computers equipped with DVD drives. For more detailed information on DVD-R/RW formats, see [www.dvdrhelp.com/dvd](http://www.dvdrhelp.com/dvd) or other web sources. For more detailed information on DVD+R/RW formats, see [www.dvdrw.com](http://www.dvdrw.com) or other web sources.

- DVD-R** DVD-R is a once-writable DVD format. It is a competitor product to DVD+R, and is therefore not compatible with that format. Some new DVD burners can write in both DVD-R and DVD+R, and most DVD players can read both formats.
- DVD-RW** DVD-RW is a DVD format that can be written to about 1,000 times. It is a competitor product to DVD+RW, and is therefore not compatible with that format. Some new DVD burners can write in both DVD-RW and DVD+RW, and most DVD players can read both formats.
- DVD+R** DVD+R is a once-writable DVD format. It is a competitor product to DVD-R, and is therefore not compatible with that format. Some new DVD burners can write in both DVD-R and DVD+R, and most DVD players can read both formats.
- DVD+RW** DVD+RW is a rewritable DVD format that can be written to about 1,000 times. It is a competitor product to DVD-RW, and is therefore not compatible with that format. Some new DVD burners can write in both DVD-RW and DVD+RW, and most DVD players can read both formats.
- DVD-RAM** DVD-RAM is a DVD format that can be written/rewritten to about 100,000 times. While DVD-RAM's boasts technological advances, it is incompatible with many DVD burners and players.

**DVD-R DL** DVD-R DL discs are dual layer writable discs in DVD-R format. A DVD-R DL disc (also called a DVD-R9 DL disc) can hold approximately 8.5 GB of data.

**DVD+R DL** DVD+R DL discs are dual layer writable discs in DVD+R format. A DVD+R DL disc (also called a DVD+R9 DL disc) can hold approximately 8.5 GB of data.

## **Blu-ray Discs**

Blu-ray discs (BD) are optical discs developed to enable burning and playing High-Definition video (HD), or to store data. BDs are burned using different technologies from CDs or DVDs, but can be made compatible with the appropriate hardware. BDs can be single-layer (2 hours HD/25GB of data) or dual-layer (4 hours HD or 50GB of data). Power2Go supports burning to rewritable, single-layer Blu-ray discs.



# Index

## A

- About Power2Go 5
- Always on Top 5
- Audio CD tab 22
- Audio CD, burning 36
- Audio Converter 59
- audio gap 23
- audio tracks, ripping to hard disk 57
- Auto-generate playlist 23, 24
- auto-run option 22
- Auto-split content by capacity 22, 23

## B

- backing up photos on disc 25, 26
- before burning
  - configuring burning options 18
  - writing a simulation 29
- Blu-ray discs 68
- bootable
  - CD, burning 33
  - CD, options 22
  - floppy disc 22, 34
  - image file 33
- buffer underrun protection 29

- Burn Disc button 9
- Burn Disc Image icon 7
- Burn DVD Folder 43
- burning
  - Audio CD 36
  - bootable data disc 33
  - CD Extra 45
  - configuration 18
  - data discs 31
  - disc images 54
  - HighMAT CD 49
  - in Power2Go Express Mode 4
  - mixed disc 45
  - mixed discs 45
  - Mixed Mode CD 47
  - movie disc 39
  - MP3 disc 37
  - multisession discs 31
  - music disc 35
  - simulation 29
  - WMA disc 37

## C

- Capacity preferences 19
- CD
  - bootable 22
  - closing 29
  - key, location of 63
  - multisession 31
  - ripping music from 57
  - types 65
  - verifying after burning 29
  - vs. DVD 64
  - write-protecting 29

- CD Capacity 19
- CD Extra, burning 45
- CD text 23
- change disc icon 22
- Change Skin 5
- close disc 29
- Configuration/Information
  - button 9
  - options 18
- Copy Disc
  - button 9
  - Power2Go Express icon 3
  - Power2Go mode icon 7
  - procedure 51
- Customize CD-R/RW capacity 19

## D

- Data Disc
  - burning in Power2Go Express mode 31
  - burning in Power2Go mode 32
  - configuration options 21
  - Power2Go Express icon 3
  - Power2Go mode icon 7
- date and time options 28
- disc
  - copying 51
  - name 28
- disc image
  - burning 54
  - saving 55
- disc label, print after burning 19
- disc types
  - supported 14

- disc utilities
  - Burn Disc Image 54
  - Erase Disc 56
  - Rip Audio 57
  - Save Disc Image 55
- DVD
  - types 66
  - vs. CD 64
- DVD Auto-fit 26

## E

- enable buffer underrun protection 29
- Erase Disc
  - button 9
  - icon 7
  - procedure 56

## F

- fax support 62
- features in Power2Go 2
- File system 22
- First Playable Action 25, 26
- floppy disc, bootable 22, 34
- full erase 56

## G

- General preferences 18

## H

Help button 9  
 Hide 5  
 HighMAT CD, burning 49

## I

images  
   supported formats 14  
 Internet preferences 20

## L

LabelPrint 19

## M

Make a disc bootable 22  
 Media Preview window 50  
 minimum system requirements 14  
 mixed disc, burning 45  
 Mixed Mode CD, burning 47  
 modes  
   Power2Go 6  
   Power2Go Express 3  
 Movie Disc  
   burning 39  
   Power2Go Express mode 3  
 MP3 CD, burning 37

MP3 Quality tab 23  
 multisession discs 31  
 music  
   ripping to hard drive 57  
   supported formats 14  
 Music Disc  
   Audio CD, burning in Power2Go  
     mode 36  
   burning in Power2Go Express  
     mode 35  
   MP3, burning in Power2Go mode  
     37  
   Power2Go mode icon 7  
   WMA, burning in Power2Go  
     mode 37

## N

New Project button 9  
 Normalize volume 23  
 number of copies 29

## O

Open Existing Project button 9

## P

phone number, tech support 63  
 photos  
   backing up on disc 25, 26

- Port Number 20
- Power2Go Express 3
  - burning data discs 31
  - burning movie discs 39
  - burning music discs 35
- Copy Disc icon 3
- copying discs 51
- Data Disc icon 3
- Movie Disc icon 3
- Power2Go mode 6
  - burning Audio CD discs 36
  - burning bootable data discs 33
  - burning data discs 32
  - burning MP3 discs 37
  - burning music discs 37
  - burning WMA discs 37
  - copying discs 51
- Power2Go Version button 9
- preferences
  - Capacity 19
  - General 18
- Print disc label after burning 19
- Print Label 33
- Proxy Server 20

## Q

- quick erase 56

## R

- Rec button 4
- Refresh button 9

- Rip Audio
  - procedure 57

## S

- Save button 9
- Save Disc Image icon 7
- Show 5
- simulation, writing 29
- skins, changing 5
- Slide Show Editor 42
- Start Program When System Starts 5
- system requirements 14

## T

- technical support 62
- Temporary directory 18

## V

- verify recorded data option 29
- video
  - supported formats 14
- Video Disc
  - Power2Go mode icon 7
- View Log 33, 54

# **W**

Web sites for technical support 62

WMA CD, burning 37

WMA Quality tab 24

write

    simulation 29

    speed 29

write-protect a CD 29

